

INTRODUCING THE ALGIZ RT10

Field tough mobility



OUR LARGEST AND BRIGHTEST SCREEN

On an Android tablet





PLATFORM

Performance for the task

- **Chipset:** Qualcomm Snapdragon 480 1.8GHz / 2.0GHz
 - **Memory:** 6GB RAM / 128GB Storage
 - **Operating System:** Android 11 GMS + AER
 - **Display Size:** 10.1" High-bright LCD panel
 - **Resolution:** 1920 x 1200px
 - **Touch:** PCAP multitouch. Chemically strengthened glass.
-
- **Weight:** 32 oz (980g)
 - **Size:** 10.79" x 7.28" x .67" (274mm x 185mm x 17mm)
-
- **Battery:** 44Wh battery. User replaceable.
 - **Run time:** 16hrs

A person is holding a tablet computer. The screen displays a dashboard with various charts and graphs, including a bar chart and a line graph. The person's hands are visible, holding the tablet. The background is dark and out of focus.

LIGHTNING FAST 5G CONNECTIVITY

For everything from information transfers to video streams

COMMUNICATION

Wireless communication

Global Configuration

- Modem: Qualcomm
- **5G NR, 4G/LTE:** B1/B2/B3/B4/B5/B7/B8/B12/B20/B28, B34/B38/B39/B40/B41, n78/n79
- **3G/WCDMA:** B1/B2/B5/B8
- Dual SIM

North America

- Modem: Sierra Wireless EM9191 Sub-6
- **5G NR:** n1, n2, n3, n5, n7, n8, n12, n20, n25, n28, n38, n40, n41, n48, n66, n71, n77, n78, n79
- **4G/LTE:** B1, B2, B3, B4, B5, B7, B8, B12, B13, B14, B18, B19, B20, B21, B25, B26, B28, B29, B30, B32, B34, B38, B39, B40, B41, B42, B43, B46, B48, B66, B71
- Single SIM
- Carrier support: Verizon, AT&T, T-mobile

WiFi/Bluetooth/NFC

- WiFi 802.11ac, a/b/g/n
- Supports external antenna for best performance
- Bluetooth v5.1
- NFC 13.56 MHz





CONNECTIVITY

Wired communication

Connectivity

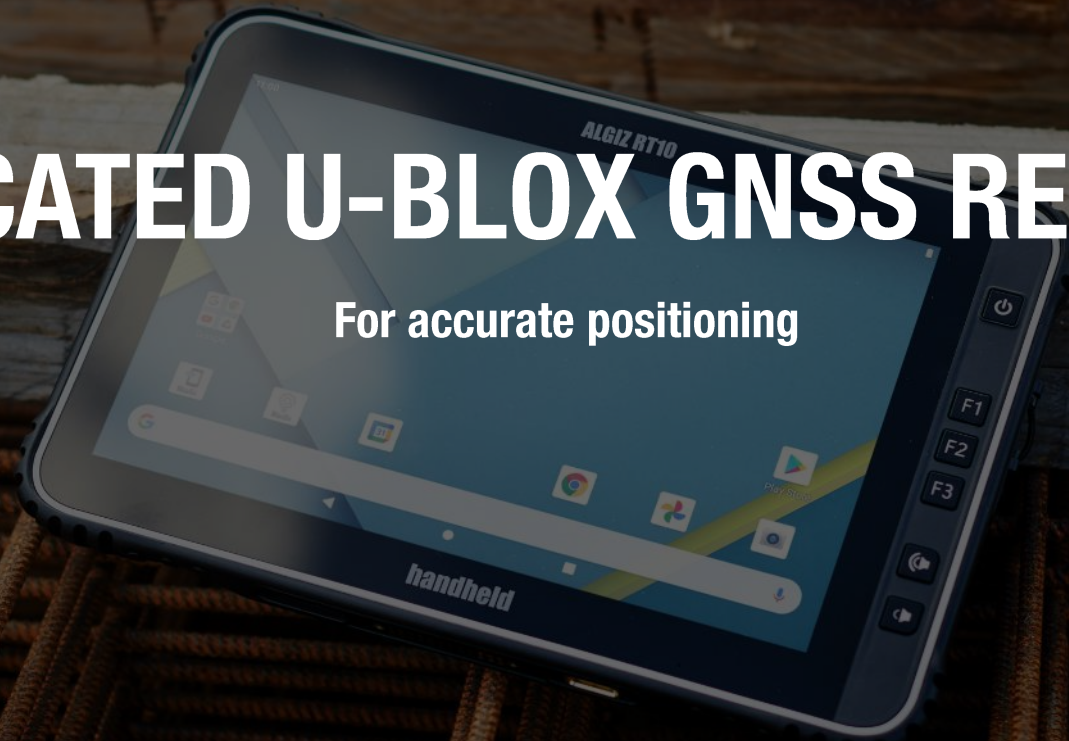
- 1x USB-C OTG
- 2x USB-A
- 1x micro-SD
- 1x 3.5mm legacy headphone jack

Camera

- Rear facing: 13 megapixel with autofocus and flash
- Front facing: 5 megapixel

DEDICATED U-BLOX GNSS RECEIVER

For accurate positioning



POSITIONING

Dedicated GNSS module

- Integrated U-blox NEO-M8U GNSS module
- GPS/QZSS, Galileo, Glonass, BeiDou
- 3 concurrent systems
- SBAS support
- Reliable performance
- Untethered Dead Reckoning (UDR) for continuous navigation in less-optimal conditions such as inner cities and through tunnels
- Supports external antenna for best performance





DATA COLLECTION

Barcode scanner [Optional]

- 2D imager N6703 from Honeywell
- Positioned on top
- Configurable in UI
- Fast scan speed
- Motion tolerance enabling reliable scans and speed
- OCR support

UHF reader [Optional]

- Europe: 865-868MHz
- North America: 902-928MHz

Sensors

- Fingerprint reader, Gyroscope, Accelerometer, E-compass, Pressure sensor



PROGRAMMABLE KEYS

Function keys

- 3 Programmable function keys (F1-F3)
- Accessible via SDK
- Configurable in UI



EXPANSION PORT

Adds flexibility

Support

- 5V and 3.3V power
- Serial RX/TX
- USB 2.0

DURABILITY





RUGGED

MIL-STD 810 and Ingress Protection

- **Operating temperature**
-4°F to 140°F (-20°C to + 60°C)
MIL-STD 810G, Method 501.5/502.5 Procedure II
- **Storage temperature**
-22°F to 158°F (-40°C to 70°C)
MIL-STD 810G, Method 501.5/502.5 Procedure I
- **Drop/Shock**
26 drops from 4ft (1.2m)
MIL-STD 810G, Method 516.6 Procedure IV
- **Vibration**
MIL-STD 810G, Method 514.6 Procedure I
- **Humidity**
MIL-STD 810G, Method 507.5 Procedure II
- **Pressure/Altitude**
15000ft (4572 m)
MIL-STD 810G, Method 500.5 Procedure I
- **Sand/Dust/Water**
IP67

A close-up photograph of a person's hand holding a rugged, black handheld device. The hand is wearing a black wristband with the word "handheld" printed on it. The device has a textured grip and a small screen. The background is a blurred warehouse with shelves of cardboard boxes.

OPTIMIZE AND ACCESSORIZE

For field efficiency

VEHICLE DOCK

Lockable with multiple I/Os



VEHICLE DOCK

Lockable with multiple I/Os



Features

- Secure installation
- Lockable with key
- 2 x USB
- RJ45 Ethernet
- Serial (rx/tx)
- HDMI
- GPS/WiFi antenna pass-through
- VESA 75



VEHICLE DOCK

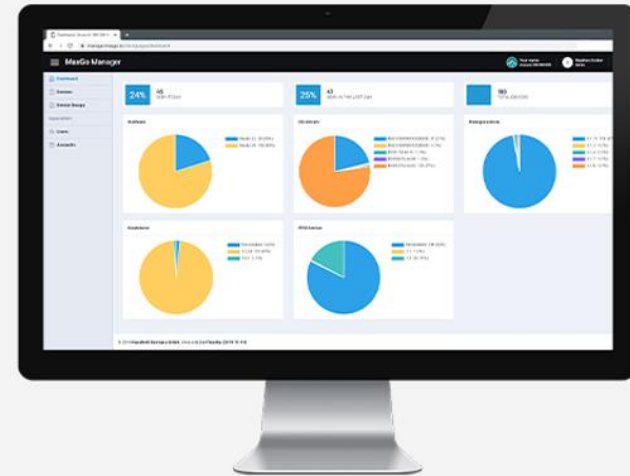
RJ45, Serial, HDMI, Wifi/GPS antennas



MAXGO SUITE

Handheld software solutions

- Designed to facilitate quick custom setups
- For a curated, secure experience
- Across all Handheld Android devices





CONFIGURATIONS

ALGIZ RT10

Configurations

Available configurations

- Global version
- Global version with barcode reader

Configurations in development

- North America version with Sierra Wireless EM9191 modem module
- Global version with UHF reader

