

## INDUSTRIAL GARBAGE BAGS

- Bags are "Best in Class" on attributes such as energy use, amount of recycled material, post consumer waste retrieved and re-used
- Quality of these "green bags" is as good as "non-green bags"
- Excellent strength and puncture resistance eliminate the need for double bagging
- Excellent performance when compared to standard in the category
- RMP® garbage bags are certified UL ECOLOGO® 126 by a well recognized Canadian third party certification body
- Certified UL ECOLOGO® 126 bags are less harmful for the environment



Model No.	Size W" x H"	Type	Gauge /mil	Qty /Box	Lbs Per Case
<b>BLACK</b>					
JM669	20 x 22	Utility	0.65	500	9.50
JM670	22 x 24	Utility	0.65	500	11.40
JM671	24 x 22	Utility	0.65	500	11.40
JM672	26 x 36	Regular	0.70	250	11.00
JM673	30 x 38	Regular	0.70	250	13.30
JM674	35 x 50	Regular	0.75	200	17.50
JM675	26 x 36	Strong	0.90	200	11.30
JM676	30 x 38	Strong	0.90	200	13.70
JM677	35 x 50	Strong	0.90	125	13.20
JM678	42 x 48	Strong	0.90	125	15.20
JM679	26 x 36	X-Strong	1.20	125	9.40
JM680	30 x 38	X-Strong	1.20	125	11.40
JM681	35 x 50	X-Strong	1.30	100	15.20
JM682	42 x 48	X-Strong	1.30	75	13.20
JM683	35 x 50	2X-Strong	1.90	75	16.70
JO107	30 x 38	3X-Strong	3.00	50	11.40
JM684	35 x 50	3X-Strong	3.00	50	17.50
<b>WHITE</b>					
JM685	20 x 22	Utility	0.65	500	9.50
JM686	22 x 24	Utility	0.65	500	11.40
<b>CLEAR</b>					
JM687	20 x 22	Utility	0.65	500	9.50
JM688	22 x 24	Utility	0.65	500	11.40
JM689	26 x 36	Strong	0.90	200	11.30
JM690	30 x 38	Strong	0.90	200	13.70
JM691	35 x 50	Strong	0.90	125	13.20
JM692	42 x 48	Strong	0.90	125	15.20
JM693	26 x 36	X-Strong	1.20	125	9.40
JM694	30 x 38	X-Strong	1.20	125	11.40
JM695	35 x 50	X-Strong	1.30	100	15.20
JM696	42 x 48	X-Strong	1.30	75	13.20
JO156	35 x 50	3X-Strong	3.00	50	11.40

## HAZARDOUS WASTE BAGS

- Designed for the safe containment of all hazardous waste removal
- Printed with HAZARDOUS MATERIAL
- Hazard Type: Infectious Waste
- Size: 36" x 60"
- Thickness: 6 mil
- Quantity per roll: 50
- Colour: Yellow with black lettering

Model No. SEK328



## LITTER PICKER

- Features a long, lightweight aluminum shaft that makes grabbing objects in hard to reach places easy
- Magnet located at the base of the jaws makes picking up magnetic items quick and simple
- Overall Length: 38"
- Shaft Material: Aluminum
- Handle Material: Plastic
- Colour: Black & Silver

Model No. JK230



Call 1-800-561-3600 or Email [info@bapequipment.com](mailto:info@bapequipment.com) for Pricing and Delivery

## STEP-ON GARBAGE CAN

- Foot pedal allows for hands-free lid opening
- Inner receptacle facilitates emptying contents
- Dimensions: 13" L x 11.4" W x 17" H
- Capacity: 4.7 US gal.
- Material: Plastic

**Model No. JN511**



## STEP ON GARBAGE CAN

- Foot pedal allows for hands-free lid opening
- Inner receptacle facilitates emptying contents
- Dimensions: 6" L x 15.6" W x 23.6" H
- Capacity: 12 US gal.
- Material: Plastic

**Model No. JN512**



## TRASH CAN

- Handle allows for easy lifting
- Lid contains the odour and contents
- Dimensions: 19" L x 19" W x 34.25" H
- Capacity: 26 US gal.
- Material: Plastic

**Model No. JN513**



## TRASH CAN

- Handle allows for easy lifting
- Lid contains the odour and contents
- Dimensions: 24" L x 19.8" W x 37.8" H
- Capacity: 15 US gal.
- Material: Plastic

**Model No. JN514**



## LARGE WASTE CONTAINER

- Made of durable polyethylene that will not rust, chip or dent
- Handle grips allow for easy & comfortable gripping & lifting
- Capacity: 44 gal. US
- Material: Polyethylene
- Nestable

Model No.	Size W" x H"	Colour	Dimensions W" x H" x D"
<b>JK676</b>	Container	Grey	27.6 x 31.50 x 24
<b>JK677</b>	Dolly	Black	18 x 6.49 x 18
<b>JK678</b>	Lid	Grey	26.60 x 1.37 x 24.20

**JK678**



**JK676**



**JK677**

## DESKSIDE CONTAINERS

- Compact size fits under most desks
- Perfect for daily office use
- Made of durable, lightweight polyethylene that will not rust, chip or dent



Model No.	Capacity	Colour	Dimensions W" x H" x D"
JK672	13-5/8 US Qt.	Black	11.60 x 12 x 8.11
JK674	28-1/8 US Qt.	Black	14 x 15 x 10.5
JK673	13-5/8 US Qt.	Blue	11.60 x 12 x 8.11
JK675	28-1/8 US Qt.	Blue	14 x 15 x 10.5

## ROLLABLE CONTAINERS

- Durable polyethylene construction is resistant to chipping and peeling
- Wheels allow for the efficient movement of heavy contents
- Overall Dimensions: 23-3/4" W x 24" D x 40" H
- Easy to grip handles
- Capacity: 65 US gal.
- Material: Polyethylene



Model No.	Colour
JH478	Blue
JH479	Grey

## WASTE BINS

- Plastic construction prevents rusting, chipping and peeling
- Optional rolling base allows for easy movement of waste bin
- Overall Dimensions: 12 1/2" W 17 1/4" D x 23" H
- Lids sold separately
- Capacity: 16 US gal.
- Material: Plastic

No modèle	Description	Couleur	Style de couvercle
JH485	Container	Grey	-
JH480	Lid	Blue	Rectangle
JH481	Lid	Red	Round
JH482	Lid	Yellow	Round
JH483	Trolley	-	-
JH484	Trolley Hooks	-	-



JH485 & JH483



## UTILITY CARTS

- Shelf design allows for quick and easy loading
- Light and easy to maneuver
- No. of Shelves: 3
- Cart Material: Plastic
- Wheel Material: Rubber
- Capacity: 250 lbs.
- Assembly required

**KLETON**

Model No.	Overall Width"	Overall Depth"	Overall Height"
<b>JH486</b>	19-3/4	40-1/4	37-1/2
<b>JH487</b>	16-3/4	33-1/2	37



## CLIP ON BUCKETS

- Latches on to Kleton 3-shelves utility carts **JH486** & **JH487**
- Material: Plastic

Model No.	Overall Width"	Overall Depth"	Overall Height"
<b>JN508</b>	19-3/4	40-1/4	37-1/2
<b>JN509</b>	16-3/4	33-1/2	37

## PLASTIC UTILITY SERVICE TRUCKS

- Durable structural foam construction will not dent, rust or bend
- Non-marking 5" casters

**KLETON**

**500 - LB.  
CAPACITY**  
Evenly Distributed

Model No.	Overall Width"	Overall Depth"	Overall Height"
<b>ML618</b>	17-1/2	34-1/2	32-1/2
<b>ML619</b>	25-1/2	40-1/2	32-1/2



## PLASTIC FLAT SHELF UTILITY TRUCKS

- Durable structural foam construction will not dent, rust or bend
- Non-marking 5" casters
- Flat top shelf makes loading and unloading of heavy boxes easy
- Overall size: 25 1/2" W x 40 1/2" D x 32 1/2" H

Model No. **ML620**

**KLETON**

**500 - LB.  
CAPACITY**  
Evenly Distributed





## MOP BUCKET & WRINGER COMBO PACKS

- Wringer and bucket setup reduces splashing for a safer and cleaner work environment
- Built to accommodate heavy use
- Handles and wide rounded spout to facilitate emptying
- Compatible with cleaning carts
- Removable casters
- Visible caution signs on sides of bucket
- Colour: Yellow
- Bucket Capacity: 9.5 US Gal. (38 Quart)



Model No.	Wringer Type
JG811	Side Press
JG952	Down Press

## MOP WRINGERS & BUCKETS

### WRINGER

- Wringer reduces splashing for a safer and cleaner work environment
- Ideal for mops up to 32 oz.
- Ergonomic handle allows for effortless operation
- Colour: Yellow

### MOP BUCKET

- Handles and wide rounded spout facilitate emptying
- Visible caution sign on side of bucket
- 3" casters for easy mobility
- Bucket Capacity: 9.8 US Gal. (38 Quart)



Model No.	Description
JG809	Side Press Wringer
JG810	Down Press Wringer
JG812	Mop Bucket

## WINDOW WASHER BUCKET

- Rectangle shape ideal for tools such as window washers and squeegees that wouldn't fit ordinary buckets
- Clip-on plastic sleeve for window washers and squeegees
- Ergonomic handle for carrying
- Swivel casters that allow for an easy movement
- Capacity: 6.25 US gal

Model No. JN516



## MOP WRINGER BUCKET

- Rectangle shape ideal for tools such as window washers and squeegees that wouldn't fit ordinary buckets
- Floor drain facilitates emptying the bucket
- Ergonomic handle for carrying
- Swivel casters that allow for an easy movement
- Capacity: 11 US gal.

Model No. JN501



## ULTIMATE FACILITY MAINTENANCE CLEANING KIT

- Contains a wide variety of products to provide a cleaning solution for everyday situations
- Ample storage capacity for all cleaning equipment, as well as swivel casters in front and 8" rear wheels for easy use
- Overall Dimensions: 31" L x 20" W x 38" H
- Colour: Black
- Cart Material: Plastic
- Cart Bag Colour: Yellow
- Cart Bag Size: 51" x 20" x 38"

**Kit includes:**

- 1x Janitorial Cart
- 1x Wet Floor Sign
- 1x Mop Bucket & Wringer
- 1x Wet Floor Mop
- 1x Duster
- 1x Multi-Purpose General Cleaner
- 1x Multi-Purpose Bathroom Cleaner
- 1x Glass Cleaner
- 5x Microfibre Cloths
- 1x Disinfecting Wipes
- 24x Paper Towel Rolls
- 1x Bucket
- 1x Window Squeegee
- 1x Broom & Dustpan
- 2x Trigger Sprayer & Bottle
- 100x Size Large, Powder Free, Nitrile Disposable Gloves
- 1x Size Large, 15-mil Thick, Nitrile Flock-Lined Gloves

**Model No. JK229**



## FACILITY MAINTENANCE CLEANING STARTER KIT

- Ample storage capacity for all cleaning equipment
- Overall Dimensions: 51" L x 20" W x 38" H
- Colour: Black
- Cart Material: Plastic
- Bag Colour: Yellow
- Bag Size: 14" x 10" x 31"

**Kit includes:**

- 1x Janitorial cart
- 1x wet floor sign
- 1x mop bucket and wringer
- 1x broom and dustpan
- 2x trigger sprayer and bottle
- 100x size large p.f. nitrile disposable gloves
- 1x and size large 15 mil thick.nitrile flock-lined glove

**Model No. JI632**



**Call 1-800-561-3600 or Email [info@bapequipment.com](mailto:info@bapequipment.com) for Pricing and Delivery**

## MULTI-FUNCTIONAL CARTS

- Ample storage capacity for all cleaning equipment
- 4 shelves and hooks keep appliances organized
- Swivel casters in front and 8" rear wheels allow for easy use
- Overall Dimensions: 51" L x 20" W x 38" H
- Bag Size: 14" x 10" x 31"
- Cart Colour: Black
- Bag Colour: Yellow
- Cart Material: Plastic

**Model No. JG813**



## MULTI-FUNCTIONAL CART

- All three shelves have raised edges to help organize the contents
- Large bottom shelf capable of fitting a mop bucket
- Built-in hook to hold signs
- Mop and broom holders on the side
- Swivel front wheels allows for easy movement and sturdy rear wheels
- Overall Dimensions: 44" X 20" X 38"
- Cart Colour: Grey
- Bag Colour: Yellow
- Cart Material: Plastic

**Model No. JN515**



## TOOL CADDY

- Three compartments for better organization of tools and supplies
- Grip handle for easier transportation

**Model No. JN507**



## MULTI-FUNCTIONAL MOP TROLLEY

- Comfort grip handle provides easy maneuverability
- Large front platform that can easily accommodate a mop bucket or garbage bin
- Swivel casters that allow for an easy movement

**Model No. JN502**





## BILINGUAL SAFETY FLOOR SIGNS

- Durable polypropylene construction
- Bright yellow for maximum visibility
- Message in both English and French
- Stamped black lettering will not fade or peel
- Dimensions: 12" W x 24" H
- Weight: 2 lbs.

Model No. JD391



## BILINGUAL SAFETY FLOOR SIGNS

- Bilingual pictogram is large for improved legibility
- Plastic case and wall mounting hardware included
- Bright yellow colour promotes visibility of safety hazards to help prevent accidents
- Polyester construction is easy to hand wash and resists damage from oils and various chemical solvents
- Height: 30"

Model No. JI455



## DUST PAN WITH BROOM

- Broom and pan connect to be stored as one
- Dust pan has wheels for easy maneuverability
- Durable plastic pan is wide to easily pick up dust and debris
- Ergonomic slanted handle allows you to sweep hard to reach places



## BOOT & SHOE CLEANER

- Option to anchor to the floor ensures a secure brush
- Constructed of stiff polypropylene bristles
- Designed to effectively scrape off dirt & debris from footwear
- Ideal for high traffic areas such as schoolyards, construction sites and industrial areas
- Overall Length: 15"
- Colour: Yellow

Model No. JK632

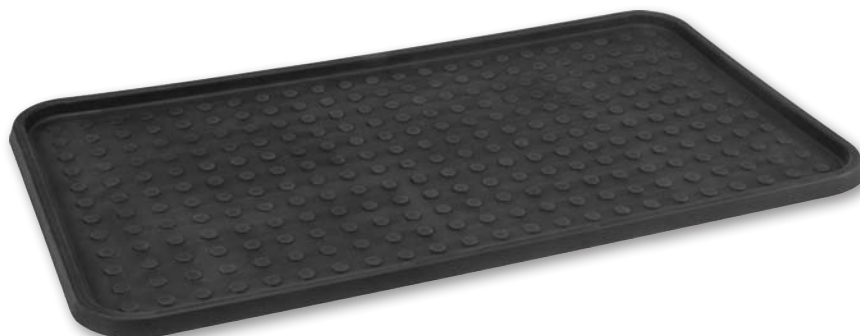


Model No.	Description	Dimensions L" x W"
JH488	Dust Pan w/Broom	-
JH525	Dust Pan	24 x 12
JH526	Broom	27 x 9-1/2

## PLASTIC BOOT TRAY

- Durable plastic construction with a raised edge to corral melting snow, mud or salt
- Keeps dirt and moisture off floors
- Great for entryways, garages or closets

**ZENITH**  
Safety Products



Model No.	Thickness	Dimensions L" x W"
SGH285	0.6"	25" x 14"
SGU858	1.18"	39" x 19"



## PORTABLE MOBILE BARRIERS

- Mobile safety barrier for indoor applications
- Flexible panels allow multiple configurations, including straight, curved or round
- Includes four locking straps for easy storage
- Tilts and rolls easily
- This item is shipped fully assembled and ready for immediate use
- Material: Plastic
- Colour: Yellow
- Expanded Length: 13'
- Height: 40"

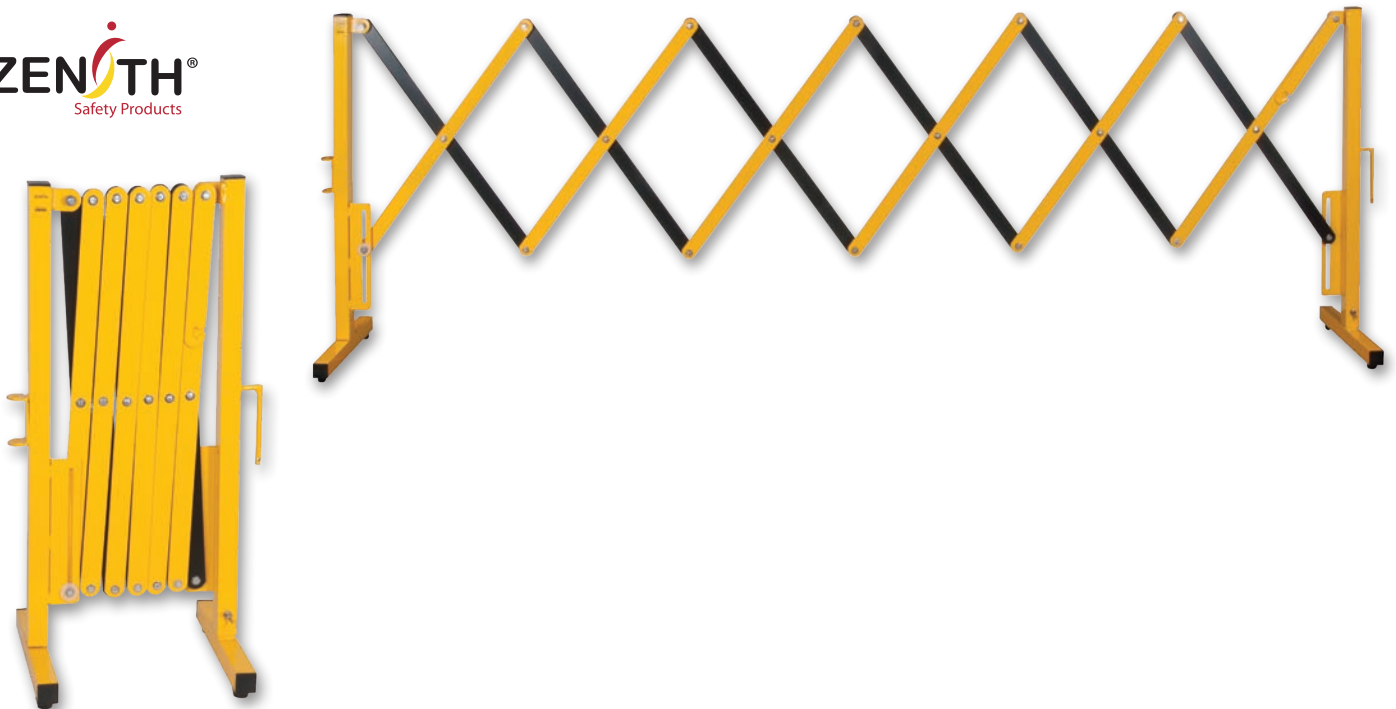
Model No. SGO660



## 11' EXPANDABLE BARRIERS

- Steel and aluminum construction
- Collapsible design allows for easy storage when not in use
- Lightweight and free standing for easy setup when needed
- Side hook allows multiple units to be used together
- Height: 37"
- Colour: Black and yellow
- Weight: 20 lbs.
- Optional caster kit: SDK991

Model No. SDK990



Call 1-800-561-3600 or Email [info@bapequipment.com](mailto:info@bapequipment.com) for Pricing and Delivery

## BAMBOO HANDLES

- Multi-purpose handle can be used with push brooms, squeegees, and deck scrubs
- Durable bamboo construction



Model No.	Description	Length	Diameter"	Tip Style
<b>JL007</b>	Standard	54"	1-1/8"	Tapered
<b>JL008</b>	Standard	60"	1-1/8"	Tapered
<b>JL009</b>	Standard	54"	15/16"	Threaded
<b>JL010</b>	Metal Tip	60"	15/16"	Threaded
<b>JL011</b>	Standard	60"	1"	Tapered

## LONG HANDLE FLOOR SCRAPER

- Ergonomic long aluminum handle
- Length: 10"
- Blade Material: Steel
- Blade Width: 3-7/8"
- Blade Length: 9/16"

Model No. JN506



## FLOOR SCRAPER

- General purpose portable floor scraper with lightweight plastic handle
- Comes with a removable protective sleeve
- Blade Material: Steel
- Blade Width: 4"
- Blade Length: 9/16"

Model No. JN510



## BRASS SQUEEGEE

- Ergonomic handle
- Frame material: Brass
- Squeegee material: Rubber



Model No.	Description
J0141	14" squeegee with handle
J0142	18" squeegee with handle
JN521	14" Brass channel rubber
JN522	18" Brass channel rubber
JN523	Brass handle

## WINDOW WASHER

- Light-weight and ergonomic handle reduces fatigue
- Moderate amount of water retention fibre sleeve for smaller areas



Model No.	Description
JN519	14" window washer
JN520	18" window washer
JN525	14" replacement sleeve
JN526	18" replacement sleeve

## DUAL-COMPARTMENT BUCKET

- Dual compartments to separate cleaning solution and rinse water
- Easy and neat pouring with the spout
- Dimensions: 18" L x 14-1/2" W x 11" H
- Capacity: 4.75 US gal.

Model No. JN504



## WRINGER AND BUCKET

- Light-weight design
- Removable clip-on wringer
- Two compartments to separate clean and dirty water
- Capacity: 3.75 US gal.

Model No. JN505



## SOAP DISPENSER

- Self-adhesive pads and mounting hardware included
- Vertical swing door
- Includes locking feature
- Made of durable plastic
- Capacity: 1000 ml
- Style: Push
- Format: Cartridge Refill
- Type: Wall-Mount



Model No.	Description	Colour
JL604	Foam	White
JL605	Foam	Black
JL606	Lotion	Black
JL607	Lotion	White

## SOAP REFILLS

- Certified UL ECOLOGO® 2784
- 1785 hand washes per foam soap cartridge
- Fragrance-free and dye-free
- For industrial, institutional and food plant use only
- Net Volume: 1 L



Model No.	Type	Description
JL608	Liquid	Moisturizing Hand Soap, Clear, Unscented
JL610	Foam	Moisturizing Hair & Body Wash, Green, Scented
JL609	Foam	Eco-Friendly Hand Soap, Blue, Scented
JL611	Foam	Eco-Friendly Hand Soap, Clear, Unscented

Call 1-800-561-3600 or Email [info@bapequipment.com](mailto:info@bapequipment.com) for Pricing and Delivery



## ORANGE PUMICE HAND CLEANER

- Fresh, natural orange citrus scent
- Pumice scrubbing particles for extra deep cleaning
- Quick and easy removal of dirt, grease, paint, ink, epoxy, tar, rust and most industrial soils
- High quality pump included with every bottle for controlled dispensing
- Can conveniently be used with or without water
- No harsh solvents, leaving hands soft and clean
- Accepted for use in Canadian food processing facilities
- Type: Pumice
- Container Size: 3.6 L
- Container Type: Jug
- Fragrance: Orange

**Model No. JG223**



## ORANGE HAND CLEANER

- Fresh, natural orange citrus scent
- Quick and easy removal of dirt, grease, paint, ink, epoxy, tar, rust and most industrial soils
- High quality pump included with every bottle for controlled dispensing
- Can conveniently be used with or without water
- No harsh solvents, leaving hands soft and clean
- Accepted for use in Canadian food processing facilities
- Type: Cream
- Container Size: 4 L
- Container Type: Jug
- Fragrance: Orange

**Model No. JL018**



## GEL - CLEAR GEL HAND SOAP

- Smooth gel with gentle cleaning for hair, hands and body
- Smooth gel removes dirt and tough stains with ease
- Fresh green apple scent
- Biodegradable, phosphate free
- Accepted for use in Canadian food processing facilities
- Container Size: 4 L

**Model No. 13.40**



## PINK LIQUID HAND SOAP

- Leaves hands smelling baby fresh, soft and clean
- Biodegradable, phosphate free
- Accepted for use in Canadian food processing facilities
- Container Size: 4 L

**Model No. NI343**



## PERLUX - WHITE LOTION SOAP

- Luxurious high quality concentrated lotion
- Rich blend of emollients leaves hands soft, fresh and clean
- Accepted for use in Canadian food processing facilities
- Biodegradable, phosphate free
- Container Size: 4 L

**Model No. NI347**



**Call 1-800-561-3600 or Email [info@bapequipment.com](mailto:info@bapequipment.com) for Pricing and Delivery**



## MULTI-PURPOSE CLEANER & DEGREASER

- Formulated to safely clean and deodorize all washable surfaces
- Biodegradable, non-toxic, non-corrosive
- Concentrated
- Contains natural tangerine essential oils
- Accepted for use in Canadian food processing facilities
- Certified UL ECOLOGO® 2759
- 4 L

Model No. JC001



## HEAVY-DUTY CLEANER & DEGREASER

- Super concentrated cleaning power for a variety of heavy duty applications
- Biodegradable, non-toxic, non-corrosive
- Contains natural tangerine essential oils
- Dissolves grease, oil, inks, grime and tough stains on contact
- Accepted for use in Canadian food processing facilities
- Certified UL ECOLOGO® 2759
- Container Size: 4 L

Model No. JC002



Call 1-800-561-3600 or Email [info@bapequipment.com](mailto:info@bapequipment.com) for Pricing and Delivery



## LEMON SCENTED CLEANER & DEGREASER

- Concentrated, heavy-duty, multi-purpose cleaner
- Cleans, deodorizes and is safe to use on all washable surfaces
- Biodegradable, non-butyl
- Container Size: 4 L

Model No. JA147



## NATURAL CITRUS BASED CLEANER & DEGREASER

- Concentrated, heavy-duty
- Biodegradable, phosphate-free, non-abrasive, non-butyl
- Accepted for use in Canadian food processing facilities
- Container Size: 4 L

Model No. JA465



## PHOSPHATE-FREE CLEANER & DEGREASER

- Concentrated, heavy-duty, powerful, fast acting alkaline cleaner
- Removes stains, grime, oil, soot and grease on contact
- Accepted for use in Canadian food processing facilities
- Biodegradable
- Container Size: 4 L

Model No. JA148



## SUPER CONCENTRATED CLEANER & DEGREASER

- Emulsifying agents break down grease, oil and tough stains on contact
- Strong enough to strip off old floor finish
- Heavy-duty formulation
- Biodegradable water soluble
- Accepted for use in Canadian food processing facilities
- Container Size: 4 L

Model No. JA466



## OXY-CLEANER & STAIN REMOVER

- Concentrated hydrogen peroxide power, safe for all washable surfaces
- Cleans, brightens and deodorizes floors, glass, bathroom and kitchens
- Biodegradable, non-toxic, non-corrosive
- Contains natural tangerine essential oils
- Accepted for use in Canadian food processing facilities
- Certified UL ECOLOGO® 2759
- Container Size 4 L

Model No. JC003



## ORANGE SCENTED NEUTRAL CLEANERS

- Concentrated neutral detergent specially formulated to clean any floor
- Cleans, brightens and deodorizes
- Low foaming
- Pleasant citrus-orange scent
- Container Size: 4 L

Model No. JA464



## GLASS & MULTI-SURFACE CLEANER

- Ready-to-use
- Perfect for use on windows, glass, mirrors, counters
- Biodegradable, non-toxic, non-corrosive
- Contains natural essential oils
- Dries quickly and leaves no streaks, film or residue
- Accepted for use in Canadian food processing facilities
- Certified UL ECOLOGO® 2759
- Container Size: 4 L

Model No. JC008



## DISINFECTANT & CLEANER

- Concentrated and multi-purpose cleaner
- Effective disinfectant against bacteria, fungi, mould and mildew
- Lemon fresh scent
- Controls germs and odours
- Accepted for use in Canadian food processing facilities
- D.I.N. #438405
- Container Size: 4 L

Model No. JC686



## TANGERINE OIL NEUTRAL CLEANERS

- Safely cleans all washable surfaces using a neutral pH concentrated formulation
- Accepted for use in Canadian food processing facilities
- Biodegradable, non-toxic, non-corrosive
- Contains natural essential oils
- Concentrated
- No rinse formulation
- Certified UL ECOLOGO® 2777
- Container Size: 4 L

Model No. JC006



## PINE OIL NEUTRAL CLEANERS

- Safely cleans all washable surfaces using a neutral pH concentrated formulation
- Biodegradable, non-toxic, non-corrosive
- Contains natural pine essential oils
- Concentrated
- No rinse formulation
- Accepted for use in Canadian food processing facilities
- Certified UL ECOLOGO® 2777
- Container Size: 4 L

Model No. JC007





## BATHROOM CLEANER TILE, TUB & BOWL

- Cleans and deodorizes with fresh scent
- Eliminates soap scum, hard water stains, rust scale and lime deposits
- Ready-to-use
- Biodegradable, non-toxic and non-corrosive
- Works well on tough stains
- Certified UL ECOLOGO® 2759
- Container Size: 4 L

Model No. JC005



## MULTI-PURPOSE BATHROOM CLEANER

- Formulated to clean, shine and deodorize with a fresh scent
- Safely cleans soap scum and urine from floor, counters, sinks, showers and toilets
- Concentrated
- Biodegradable, non-toxic, non-corrosive
- Contains natural essential oils
- No acids or bleach
- Certified UL ECOLOGO® 2759
- Container Size: 4 L

Model No. JC004



## URINAL SCREEN

- Helps neutralize bathroom smells
- Reduces clogging of urinals
- Scent lasts up to 30 days
- Material: PVC
- Colour: Blue
- Fragrance: Cherry

Model No. JK659



## PLUNGER

- Clears stubborn clogs in toilets, sinks, showers and tubs
- Durable rubber suction cup creates a tight seal around drains
- Handle Material: Wood

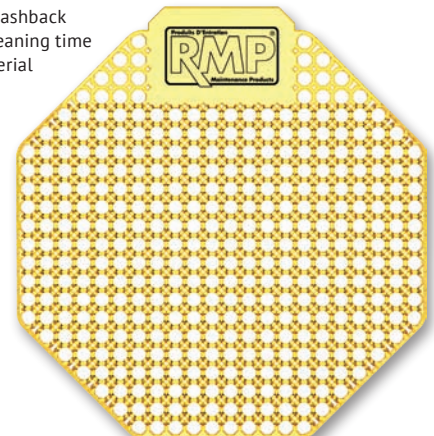
Model No. JN536



## SPLASH FREE URINAL SCREEN

- More fragrant than standard vinyl urinal screens
- 30 days of odour control
- Works well in all types of urinals
- Prevents up to 99% of splashback therefore reducing the cleaning time
- Made of flexible EVA material
- Scent: Mango
- Colour: Yellow

Model No. JM581



## NEOPRENE/RUBBER LATEX CHEMICAL RESISTANT GLOVES

- Accepted for use in Canadian food processing facilities
- Natural rubber latex with blue neoprene over-dip
- Cotton flock-lined
- Raised diamond pattern provides superior grip
- Superior chemical resistance
- Length: 12"
- Thickness: 20 mil
- Case Qty: 120
- Sold/Priced Per: Pair

### APPLICATIONS

Food processing, plant maintenance, chemical processing, automotive and printing



Model No.	Size
SAM650	7
SAM651	8
SAM652	9
SAM653	10



## RUBBER LATEX CANNERS GLOVES

- Embossed diamond pattern provides superior grip
- Chlorinated for easy donning
- Beaded cuff for added tear resistance
- Unlined
- 12" length, 15-mil thick
- Case Quantity: 144
- Sold/Priced Per: Pair

### APPLICATIONS

Food processing, plant maintenance and janitorial applications



### 15 MIL

Model No.	Size
SEI698	9
SEI699	10

### 18 MIL

Model No.	Size
SEI692	7
SEI693	8
SEI694	9
SEI695	10



## RUBBER LATEX CHEMICAL RESISTANT GLOVES

- Silicone-free
- Cotton flock lined
- Embossed diamond pattern provides superior grip
- Chlorinated for easy donning
- Length: 12"
- Cuff Style: Gauntlet
- Sold/Priced Per: Pair

### APPLICATIONS

Food processing, plant maintenance and janitorial applications



### 15 MIL

Model No.	Size
SEF204	7
SEF205	8
SEF206	9
SEF207	10

### 18 MIL

Model No.	Size
SEF005	7
SEF006	8
SEF007	9
SEF008	10



## LAUNDRY CART

- Light-weight plastic X-frame design
- Yellow nylon bag is easy to clean
- Swivel casters allows the cart to be maneuvered easily
- Overall Dimensions: 20.5" X 38" X 43"
- Volume Capacity: 6.4 cu. Ft.

**Model No. JN503**



## FAN DUSTER

- Triangular shape allows to easily fit ceiling fan blades and light fixtures
- Cleans all sides of standard ceiling fan blades simultaneously
- Attaches to any tapered handles

**Model No. JN518**



## CUTLERY TRAY

- Four deep rounded compartments stores a large quantity of cutlery
- Overall Dimensions: 20" x 11" x 3.6"
- Material: Plastic

**Model No. JN524**



**Call 1-800-561-3600 or Email [info@bapequipment.com](mailto:info@bapequipment.com) for Pricing and Delivery**



## INDUSTRIAL WET/DRY VACUUMS

- Swivel casters provide easy movement in any direction
- Positive lock on hose eliminates unexpected disconnects
- 16' power cord
- Accessories include: Flexible hose, extension wands, utility nozzle, crevice nozzle, floor brush, cartridge filter and dust bag

**aurora tools®**



SDN116



SDN119

Model No.	Tank Size	Peak HP	Motor Stage	CFM	Accessory Size"
SDN116	8 gal	4.5	Single Stage	95	1-7/8"
SDN119	16 gal	5.5	Single Stage	100	2-1/2"

## REPLACEMENT FILTERS AND BAGS



**aurora tools®**

Model No.	Description	Fit US Gallons Size
JC531	Cartridge Filter	8 - 16 US gal.
JC689	HEPA Cartridge Filter	8 - 16 US gal.
JG724	Dust Collector Bag	8 US gal.
JC591	Dust Collector Bag	16 US gal.

