



BAP Equipment Ltd
For Current Pricing Call :1-800-561-3600
or email: info@bapequipment.com



Tripods: GNSS/MC

Standard and Heavy Duty, with telescoping legs



FEATURES & BENEFITS

- ▶ 5119-00 version offers dual graduations, collapsible center staff with a screw clamp mechanism and includes removable 5/8 x 11 adapter, and an on-board compass

- ▶ Both GNSS tripod models feature 360° rotation and an 8-minute vial
- ▶ All aluminum hardware is anodized black for long life
- ▶ 5119-10 features large telescoping legs (1.25 to 1.5 inch diameters) feature

- adjustable handle levers on the leg pivots and a large 6-inch diameter round head which easily holds lasers or robots
- ▶ Both tripods feature extendable electrostatically powder painted legs and include replaceable points



Part No.
5119-10-FLY

PART NO.	LOCKING	HEIGHT	COLLAPSES	COLOR	WEIGHS	
5119-10-FLY	Screw Clamp	1.5, 1.8, 2 m	55 inches (1.4 m)	Flo Yellow	20.00 lb (9.07 kg)	
5119-10-YEL	Screw Clamp	1.5, 1.8, 2 m	55 inches (1.4 m)	Yellow	20.00 lb (9.07 kg)	
5119-00-FLY	Quick Clamp/Screw Clamp	1.5, 1.8, 2 m	50 inches (1.27 m)	Flo Yellow	15.00 lb (6.80 kg)	
5119-00-FOR	Quick Clamp/Screw Clamp	1.5, 1.8, 2 m	50 inches (1.27 m)	Flo Orange	15.00 lb (6.80 kg)	
5119-00-YEL	Quick Clamp/Screw Clamp	1.5, 1.8, 2 m	50 inches (1.27 m)	Yellow	15.00 lb (6.80 kg)	

Adapters: Adjustable-Tilt

Professional Stainless Steel CORS monument adapters



FEATURES & BENEFITS

- ▶ Adapters in the 2072-Series have 3.20-in (8.19-cm) diameters and overall heights of 3.036-in (7.71-cm)
- ▶ Adapters are leveled by three screws with a tilt range +/- 7°
- ▶ Includes a removable brass 5/8 x 11 male stud that is adjustable in azimuth and held in location by two set screws

- ▶ The axis height is engraved on the outside of the monuments
- ▶ Height above the pivot point to stud shoulder is 1.37-in (3.50-cm)
- ▶ Height below the brass 5/8 stud to shoulder is 0.463-in (1.18-cm)



Part No.
2072-30

PART NO.	DESCRIPTION	WEIGHS	
2072-30	1.5-inch pipe with MPT 1-1/2 x 11-1/2 TPI	5.50 lb (2.50 kg)	
2072-31	2-inch pipe with MPT 2 x 11-1/2 TPI	6.60 lb (3.00 kg)	
2072-32	3-inch pipe with MPT 3-1/2 x 8 TPI	6.90 lb (3.10 kg)	
2072-33	Male 5/8 x 11 TPI	6.20 lb (2.80 kg)	
2072-050	40-minute leveling vial	0.30 lb (0.14 kg)	

Pole Clamp: Ball and Socket Tablet

Virtually unlimited positions on the pole keeps the glare off the collector



5200-35

FEATURES & BENEFITS

- ▶ Pole Clamp locks securely to the pole, no slipping!
- ▶ All ports, connections, and camera are accessible and usable

- with the bracket attached
- ▶ Easy "snap in/out" design holds the tablet securely
- ▶ Compatible with add-on keyboard and extended battery

- ▶ Made from a single, solid 0.080 inch (2.03 mm) aluminum sheet metal
- ▶ Features ram ball links which allow many positions



Part No.
5200-35

PART NO.	WORKS WITH	
5200-30	Panasonic FZ-G1/Leica CS35 (Not for Radio Models)	
5200-31	Getac T800	
5200-35	Mesa 2, FC 5000, RT3	

Cradles: Claw Ball and Socket

Design your own custom solution with one bracket and one cradle



5200-16-050

FEATURES & BENEFITS

- ▶ These Claw™ clamps are made of durable anodized aluminum
- ▶ The Claw technology allows maximum tightening without crushing

- ▶ Features a 1-inch ram ball – the Ball-and-Socket versions allow the data collector to be in more positions
- ▶ Use with 5200-201 Ball and Socket Link on page 9



Part No.
5200-16-050



5200-29-050

PART NO.	WORKS WITH	TYPE	
5200-16-050	TSC3, Ranger 3 Series	Claw	
5200-17-050	Mesa/Tesla	Snap in/out	
5200-29-050	Panasonic FZ-M1, B2	Snap in/out	

Pole Clamp: Tablet Quick Release

Secure connection to your survey pole and tablet during field use



5200-33

FEATURES & BENEFITS

- ▶ Pole Clamp locks securely to the pole, no slipping!
- ▶ Tilting Feature with three positions, +10, +30 or +50 degrees
- ▶ Quick Release from Pole Clamp

- for taking photos, etc. and also allows Landscape or Portrait orientation of the Display
- ▶ All ports, connections, and camera are accessible and usable with the bracket attached
- ▶ Easy "snap in/out" design holds

- the tablet securely
- ▶ Compatible with add-on keyboard and extended battery
- ▶ Made from a single, solid 0.080 inch (2.03 mm) aluminum sheet metal, powder-coated black



Part No.
5200-33

PART NO.	MODEL	TABLET SIZE	
5200-32	Panasonic FZ-M1	7 inch (17.78 cm) tablet	
5200-33	Panasonic FZ-G1/Leica CS35	10 inch (25.4 cm) tablet	
5200-42	Panasonic FZ-G1/Leica CS35 with Radio	10 inch (25.4 cm) tablet	

Hands Free
Tablet Harnesses

Provide Secure Hands-free Operation During Field Use



5200-95



5200-96

Note: Tablet not included.
Brackets sold separately.

FEATURES & BENEFITS

- ▶ When purchased with the correct tablet bracket, each of these harnesses provide reliable hands-free operation
- ▶ Over one shoulder model allows for easy on/off operation (5200-95)
- ▶ Two-shoulder model allows for tighter movement and helps reduce fatigue for day-long operation (5200-96)
- ▶ Ball-and-Socket designs allows a tablet to be in multiple positions and very easy to adjust
- ▶ Mounts to tablet bracket using standard 1-1/2 inch ram ball connection
- ▶ Mount is made from a 0.080-inch (2.03-mm) black powder-coated aluminum sheet metal
- ▶ Weights: 5200-95 1.95 lbs, 5200-96 1.9 lbs
- ▶ Tablet brackets allow all ports, connections, and antenna to be accessible with the bracket attached

APPLICATIONS

- ▶ GNSS/Robotic surveying
- ▶ Construction Layout
- ▶ Road and highway surveys
- ▶ GIS Surveys



Part No.
5200-95

5200-95 — One Shoulder Tablet Harness
5200-96 — Two Shoulder Tablet Harness



COMPLETE WITH TABLET BRACKET AND RAM LINK

BRACKET PART NO.	FIT	
5200-29-051	FZ-M1	
5200-30-051	FZ-G1/CS35	
5200-31-051	Getac T800	
5200-35-051	Mesa 2/FC 5000/RT3	
5200-37-051	Yuma 2, 7" Rugged Tablet	
5200-38-051	Kenai, 10" Rugged Tablet	
5200-41-051	FZ-G1 with Radio	
5200-41	FZ-G1/CS35 with Radio, Ram	

FOR TABLETS THAT HAVE
THE QUICK RELEASE BRACKET ATTACHED

BRACKET PART NO.	FIT	
5200-39-051	Yuma 2	
5200-40-051	Kenai	
5200-42-051	FZ-G1 With Radio	

Claw Cradles:
Quick Release

Design your own custom solution with one bracket and one cradle



5200-050



5200-058



5200-059



5200-062



5200-065



5200-069



5200-070



5200-075

5200-076

FEATURES & BENEFITS

- ▶ The Claw™ is a clamping system featuring an innovative clamping device that keeps your expensive data collecting hardware snug on the pole where it belongs without crushing it
- ▶ The Claw cradles and clamps are made of durable anodized aluminum for years of trouble-free use in the field
- ▶ Quick-Release cradles plug directly in to Quick Release Pole Clamps



Part No.
5200-062

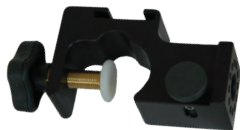
PART NO.	WORKS WITH	
5200-050	TSC2, Ranger 300X, 500X, FC 2500	
5200-058	FC-200, FC-250	
5200-059	Nomad 800-900 Series	
5200-062	Carlson Surveyor, Surveyor +, GIS-1	
5200-064	Geo 6000 Series, Geo 7X	
5200-065	TSC3, Ranger 3 Series	
5200-069	FC236, X7, PS236, PS336	
5200-070	Juno 5 / Juno T41 Series, Slate	
5200-072	Mesa Tesla	
5200-073	Archer 2, Mini2, FC 500	
5200-074	Allegro 2, Surveyor 2	
5200-075	Nautiz X8	
5200-076	Panasonic Toughpads FZ-M1, B2 (Not Claw – "Snap in")	
5200-077	Mesa 2, FC 5000, RT3 (Not Claw – "Snap in")	

Pole Clamps and Cradles

Design your own custom solution with clamp and cradle



5198-052



5198-153



5200-160



5198-073

FEATURES & BENEFITS

- ▶ Original Open-Style Pole Clamp technology for a complete solution
- ▶ Use a Claw Quick-Release cradle or clamp for a complete solution
- ▶ Made of black anodized aluminum

- ▶ Depressing the quick-release button will allow the Claw Quick-Release cradle or clamp to rotate in to a comfortable position for reading the data collector or controller

- ▶ Features a quick-release button and a stainless steel clamp screw that attaches to the pole
- ▶ Designed for standard poles or rods with a 0.75 to 1.25-inch OD



Part No.
5198-052

PART NO.	OPEN-STYLE CLAMPS	
5198-052	Plain	
5198-054	40-minute Vial	
5198-055	Compass	
5198-056	Compass and 40-minute Vial	
5198-059	0.15 x 0.92-inch Slot	
5198-152	For 1.5-inch OD Pole	
5198-153	Battery Slot and Quick Release	
PART NO.	BALL-AND-SOCKET CLAMPS (FOR 1.25-INCH OD POLE)	
5200-160	Plain	
5200-164	With Compass	
5200-165	With 40-minute Vial and Compass	
PART NO.	CLAW QUICK RELEASE CLAMPS (FOR 1.25-INCH OD POLE)	
5200-150	Plain	
5200-151	With 40-minute Vial	
5200-152	With 20-minute Vial	
5200-154	With Compass	
5200-155	With 40-minute Vial and Compass	
PART NO.	QUICK RELEASE CRADLES	
5198-073	Nautiz N7, DAP 9800, SDR33, Titan	
5198-081	PDA	
5198-086	Leica RX and Viva CS10/CS15 /CS20	

Ball-and-Socket and Claw Accessories



- ▶ Perfect for creating a custom solution
- ▶ Fits any standard instrument tripod
- ▶ Use with a 5200-201 Ball-and-Socket Link and a Ball-and-Socket Cradle (designed for your data collector) for a complete system



5199-051 — Tripod Mount

- ▶ Mounts and connects to complete your custom Ball-and-Socket Claw solution
- ▶ Includes base and suction cup with 1-inch ball



5199-054 — Suction Cup (temporary mount)

- ▶ Use the Ball-and-Socket Link for your custom solution
- ▶ Fits the 1-inch ram ball on cradles and clamps



5200-201 — Ball-and-Socket Link

- ▶ Mount your data collector or controller to this ball clamp and the handle bars of your ATV



5199-050 — ATV Ball Clamp

- ▶ Pole Clamp with 1-inch (32 mm) Ram Ball
- ▶ Fits poles with an outside diameter of 0.75-inches to 1.5-inches

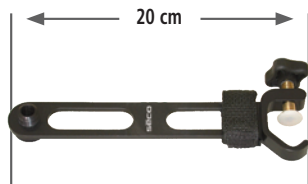


5199-052 — Ram Ball Clamp Mount



Tripod Data Collector Brackets

- ▶ The open clamp attachment allows quick and easy connection to the pole; it connects to 1-to-1.25-inch (25.4 to 31.8-mm) OD poles
- ▶ Brass male 5/8 x 11 captive stud is easily removed for direct attachment of the radio antenna to the bar
- ▶ Includes a non-slip Velcro® cable strap to help manage radio cables
- ▶ Weighs 0.22 lb (0.10 kg)



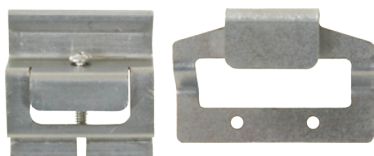
2133-03 — Antenna Bracket

- ▶ This bracket rotates for easier access to your collector

5196-13 — Rotating Bracket
5196-13-005 — Adapter

- ▶ Bracket holds a radio antenna securely to a tripod leg
- ▶ The heavy-duty bracket makes plumbing the antenna easy
- ▶ Fits all full-size and heavy-duty tripods and uses a 1/2-inch long, 5/8 x 11 male stud to secure the antenna or extension (tripod sold separately)
- ▶ Can be used with the SECO Six Foot Snap-Lock Radio Antenna Pole (5139-02, this page) or any extension with a male/female 5/8 x 11 connection
- ▶ Weighs 1.55 lb (0.70 kg)

- ▶ Designed to fit precisely on the back of the controller
- ▶ Works with most heavy-duty tripods that feature a connecting bar on the hinge area

Tripod Hook Brackets Designed for
5196-17 — Nomad
5196-18 — TSC3 or Ranger 3
5196-19 — Mesa Tesla
5196-20 — Archer 2

- ▶ Holds the Allegro, Archer®, Explorer, Recon® or Jett®•ce



5196-07 — Tilted Bracket

- ▶ Easily holds a laptop computer
- ▶ Measures: 13 x 10.25 in (33 x 26.04 cm)



5196-02 — Laptop Bracket



2133-05 — Radio Antenna Bracket for Tripod

Propeller AeroPoints

For Drone Surveying



FEATURES & BENEFITS

- ▶ 45 minutes to Accuracy: AeroPoints' in-built GPS only needs 45 minutes of activation, well within typical drone operation time
- ▶ Lightweight and durable with simple one-touch operation: a standard set of 10 AeroPoints can be placed around a survey area in minutes
- ▶ Works with any GPS-enabled drone model, including those with onboard RTK
- ▶ Works with the Propeller Aerial Data Platform as well as any other platform visualizing drone data
- ▶ Works with your grid: including nonstandard and local grid coordinate systems, using a Point Pair file that translates your grid into a coordinate reference system
- ▶ Global accuracy of 2 cm when using the Propeller Corrections Network, a known point (even local grid) or RINEX Data

Part No.
AP-10PK

AP-10PK includes: ten (10) AeroPoint units, two (2) AeroStencils, two (2) AeroPoint Bags, User Guide, and free one year subscription to Propeller's Correction Network. (MOQ: 3 sets)



Two-Piece
GNSS Rover Rods

Two-piece is easy to set up and convenient to store and transport

Cable Slot on
5125-06 and
5128-08

5128-00

40-minute
vial

FEATURES & BENEFITS

- ▶ Lightweight two-piece rover rods come in aluminum or carbon fiber and feature 5/8 x 11 tips (5125-01-YEL features a quick-release adapter) and 40-minute vials

- ▶ Outer graduations options are 10ths/100ths (GT), metric (GM) or Quick Release (QR)
- ▶ 5125-06-YEL and 5128-08 feature a cable management slot measuring 0.625 x 1.6-in to hide cables

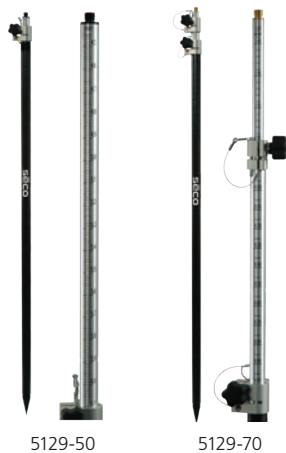
- ▶ Order 8162-00-ORG for carrying case

Part No.
5125-01-YEL

PART NO.	POLE	TIP	CABLE SLOT	OUTER GRADS	LENGTH	WEIGHS	
5125-00-YEL	Aluminum	5/8 x 11	No	10ths/100ths (GT)	2 meters	3.00 lb (1.36 kg)	
5125-01-YEL	Aluminum	Quick Release	No	None	2 meters	3.00 lb (1.36 kg)	
5125-06-YEL	Aluminum	5/8 x 11	Yes	10ths/100ths (QR)	2 meters	3.00 lb (1.36 kg)	
5128-00	Carbon Fiber	5/8 x 11	No	10ths/100ths (GT) or Metric (GM)	2 meters	1.42 lb (0.64 kg)	
5128-08	Carbon Fiber	5/8 x 11	Yes	10ths/100ths (GT, QR)	2 meters	1.42 lb (0.64 kg)	

Telescopic Carbon Fiber
Rover Rods

Carbon fiber rover rods are 30% lighter



5129-50

5129-70

FEATURES & BENEFITS

- ▶ Designed so the GNSS surveyor has all the features needed in a single rod

- ▶ The included pin can lock the length of the rod at set points
- ▶ TLV™ locking mechanism comes standard

- ▶ Carbon fiber makes these rods 30% lighter
- ▶ Order 8160-00-ORG for carrying case

Part No.
5129-50

PART NO.	GRADS	LENGTH	OUTER GRADS	PIN LOCKING	WEIGHS	
5129-50	Dual (10ths/2 mm)	4.48 ft (1.4 m) - 8.14 ft (2.45 m)	10ths/100ths (GT)	1.8 m, 2 m, 2.2 m	2.30 lb (1.05 kg)	
5129-51	Metric/2 mm	4.48 ft (1.4 m) - 8.14 ft (2.45 m)	None	1.8 m, 2 m, 2.2 m	2.30 lb (1.05 kg)	
5129-70	Dual (0.05 ft/cm)	4.69 ft (1.43 m) - 11.7 ft (3.57 m)	None	Every 20 cm	3.30 lb (1.50 kg)	
5129-71	Metric	4.69 ft (1.43 m) - 11.7 ft (3.57 m)	None	Every 20 cm	3.30 lb (1.50 kg)	

Aluminum Pole Series
with Locking Pins

5512-13-FLY-GM

5512-14-FOR-GT

FEATURES & BENEFITS

PN 5512-13-FLY-GM GNSS Model

- ▶ Extends to 2.6M
- ▶ 0 Height, graduated in centimeters
- ▶ Locking pin holes at 1.8M, 2.0M, 2.2M, 2.4M, 2.6M
- ▶ 40' Vial
- ▶ Weight 3.15lbs (1.43kg)

PN 5512-14-FOR-GT Model

- ▶ Extends to 8.5ft
- ▶ 135MM Height, graduated in centimeters and .01ft
- ▶ Locking pin holes at 6.5FT, 7.0FT, 7.5FT, 8.0FT, 8.5FT
- ▶ 40' Vial
- ▶ Weight 3.15lbs (1.43kg)

- ▶ Both models can easily be converted to different heights by using one of our Quick Change Pole Height Adapters
- ▶ PN 2090-XX – see page 19

5512-13-FLY-GM — GNSS Model
5512-14-FOR-GT — Robotic Model

Snap-Lock Rover Rods

Easy set up



FEATURES & BENEFITS

- Includes a one-piece design and two locking systems for stability
- The snap lock prevents slippage and the compression lock centers the telescopic inner pole and maintains straightness

- Telescoping rods include standard locking lengths and also have **OPTIONAL** outer graduations in metric (GM), 10ths/100ths (GT) or Quick Release (QR)
- Your choice of either aluminum

- or carbon fiber rod includes a 40-minute vial
- Order 8160-00-ORG for standard case
- Order 8151-02-FLY system bag (tripod or bipod)



Part No.
5125-20-FLY

PART NO.	POLE	OPTIONAL OUTER GRADS	LOCKING LENGTHS	WEIGHS	
5125-20-FLY	Aluminum	10ths/100ths (GT) or Metric (GM)	2 m	2.30 lb (1.05 kg)	
5125-20-YEL	Aluminum	10ths/100ths (GT) or Metric (GM)	2 m	2.30 lb (1.05 kg)	
5125-22-FLY	Aluminum	10ths/100ths (GT)	2, 1.8, 1.6 m	2.30 lb (1.05 kg)	
5128-20	Carbon Fiber	10ths/100ths (GT), Metric (GM) or (QR)	2 m	1.60 lb (0.73 kg)	
5128-22	Carbon Fiber	10ths/100ths (GT) or Metric (GM)	2, 1.8, 1.6 m	1.60 lb (0.73 kg)	
5128-24	Carbon Fiber	Standard only	1.8, 1.6 m	1.60 lb (0.73 kg)	

Instrument Tripod Accessories

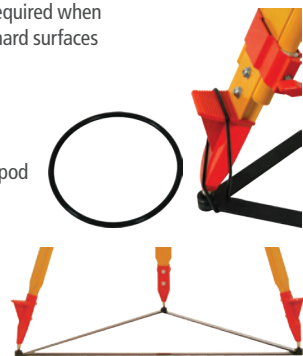


- Radio antenna tripod with antenna mast gets your radio antenna to the desired height
- Telescoped to 7.5-ft (2.3-m) and the tripod can be set to 5.5-ft (1.7-m) for a total elevation of 13-ft (4-m)
- Aluminum with a male 5/8 x 11 tip
- Hardwood/Fiberglass tripod is SECO's 5302-13-ORG
- Aluminum tripod is SECO's 5301-21-ORG
- The antenna mast can be purchased separately to convert your own heavy-duty tripod as well
- Weighs 19.00 lb (8.62 kg)



5561-20 — Radio Antenna Mast Assembly
5300-11 — Hardwood/Fiberglass
5300-12 — Aluminum (shown)

- Designed to provide the extra stability required when working indoors on concrete and other hard surfaces
- Made of heavy-duty aluminum
- Measures 35 x 35 x 35 inches
- (889 x 889 x 889 mm)
- Collapses for compact storage
- Rubber o-ring fits over the foot of the tripod for extra stability
- Weighs 3.00 lb (1.36 kg)



5610-00 — Tripod Stabilizer

- This Stabilizer helps prevent tripod legs from slipping when used on hard, slick surfaces.
- Lightweight and portable
- Collapses to 26 3/8" (67 cm)
- Opens to a three point star with 26 1/2" (67 cm) legs
- Two 0.315" (8 mm) hole in each leg, one at 35 cm from center and one at 65 cm.
- Anodized aluminum legs
- O-rings to hold tripod foot in place
- Center opening 1 7/8" (45 mm)
- Weight 1.05 lbs (0.48 kg)



5610-01 — Tripod Stabilizer

- Used to elevate a radio antenna to 6 feet plus the height of the tripod setup
- Snap locks into a fixed length of 6-feet (1.8-m)
- Collapses to 41.5-inches (1-meter)
- Includes a 3.5-inch (8.89 cm) OD plate adapter (5182-002) to attach to any 5/8 x 11 tripod heads
- Available in standard yellow or fluorescent yellow
- Weighs 1.40 lb (0.62 kg)



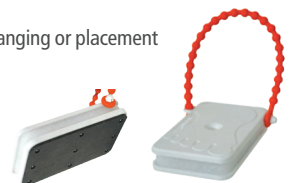
5139-02-FLY — 6 Foot Snap-Lock Radio Antenna Pole

- SECO's Tripod Radio Antenna Kit attaches easily to instrument tripods
- Tripod leg clamp will attach to any tripod leg and ram ball and socket section of clamp quickly. Sets the antenna pole up vertically
- A large washer is included to allow a straight connection to a tripod for a separate setup
- Kit consists of three antenna sections that set up the radio antenna pole height to 3.1 ft (0.95 m) above the tripod
- Kit bag measures 16 x 6 x 2-inches (40.6 x 15.2 x 5.8-cm)
- Weighs 1.90 lb (0.86 kg)



2133-06 — Tripod Radio Antenna Kit

- Lightweight and portable, keep your tripod level in all surface conditions
- Simple to use
- Features cleats to minimize slipping
- Attached bungee cables enable easy carrying, hanging or placement
- Sold in packs of three
- Each weighs 0.29 lb (0.12 kg)



5610-11 — Sta-Level Feet Tripod Stabilizer (w/ Rubber Pads)

- Provides non-slip support for tripods
- Works on all ferrous metal surfaces
- Includes three 5-inch round ceramic magnets
- Each magnet has a tripod point connection with a bungee strap
- Handle to remove magnet from surface included
- Each magnet has 210 pull pounds
- Kit bag is included



5610-12 — Tripod Anchor Kit

GNSS Accessories
and Adapters

- Converts any GNSS receiver or prism with 5/8 x 11 threads to a quick release
- Anti-rotation quick-release assembly
- Heavy-duty construction, will hold up to 20 lb (9.00 kg)
- Short height, only 60 mm (2.5 inches)
- Constructed of quality stainless steel and aluminum
- Easy to operate, push button release
- Weighs 0.35 lb (0.16 kg)



5114-04 — 60 mm Anti-Rotation Quick Release
5114-04-051 Male 5/8



- Use with GNSS Quick-Release Adapter (5187-00)
- Made of anodized aluminum or optional Stainless Steel version
- Adapter adds 76.22-mm (.937 inches) to the pole length
- Weighs 0.14 lb (0.06 kg)



5111-00 — GNSS Quick-Disconnect Adapter
5111-00-SS — GNSS Quick-Disconnect Adapter (Stainless Steel)



- The 5114-series allows quicker attachment of the GNSS antenna
- The 5114-10 is an extra-tall mag mount for use when attaching GNSS receivers with downward antennas
- Both magnets have a 3.5-inch (8.89cm) diameters (5114-050 and 5114-051)
- 5114-050 or 5114-051 weigh 0.92 lb (0.42 kg)



5114-01 — Quick-Release Triple Mag Mount
5114-02 — 5/8 x 11 Triple Mag Mount
5114-10 — Triple Mag Mount for Trimble R10
5114-050 — 5/8 x 11 Tip
5114-051 — Quick-Release Tip



- Adapter has male 5/8 x 11 threads
- Weighs 0.08 lb (0.04 kg)



5113-012 — GNSS Quick-Release Tip



- Adapter features a female 5/8 x 11 quick release tip
- Made of anodized aluminum or optional Stainless Steel version
- Adds 23.8-mm (.937 inches) to length of rod
- Weighs 0.05 lb (0.02 kg)



5187-00 — GNSS Quick-Release Adapter
5187-00-SS — GNSS Quick-Release Adapter (Stainless Steel)



- All-Terrain Rover Rod "Big Wheel"
- Measures 19 x 1-5/8-inch (48.26 cm x 3.81 cm)
- Rod and Bipod are not included with Wheel
- Perfect for RTK profiling
- Weighs 3.80 lb (1.72 kg)



5125-056 — All Terrain Wheel



Add Rover top section:
5125-057-FLY — Aluminum Rod
5128-052 — Carbon Fiber Rod



- GNSS Compass for 1.25 inch (3.18 cm) diameter poles



5125-050 — GNSS Compass



- The Satellite Stick™ XL is composed of six, 1-in (25.4-mm) OD carbon fiber sections
- Collapses to 1.23-ft (37.5-cm)
- Includes carrying bag
- Weighs 2.40 lb (1.09 kg)



5126-10 — Satellite Stick XL



- Constructed from anodized aluminum



2120-00 — Tripod Adapter 3-1/2 x 8 to 5/8 x 11
2130-00 — Tripod Adapter 5/8 x 11 to 3-1/2 x 8
2132-01 — Tripod Adapter 5/8 x 11F to 1/4 x 20M



GNSS Bracket for Truck Door

Expands vertically from 47 to 61 inches



FEATURES & BENEFITS

- ▶ This bracket holds a GNSS pole to the door of your survey truck
- ▶ Easy to put on and take off and features a non-damaging mount
- ▶ 5114-20 fits most trucks and SUVs

- ▶ The door opens and closes with the bracket attached to the door
- ▶ Bracket holds all GNSS- and RTK type poles
- ▶ Utilizes a safety strap under tension to keep it on the door

- ▶ Brackets are available to hold controller inside the cab (#5199 on page #)
- ▶ Designed for off-road use
- ▶ Both products available in colors FLY, FOR, YEL
- ▶ Weighs 6.20 lb (2.80 kg)



Part No.
5114-20-FOR



5114-20-051
3-inch Extension Kit



5114-20-050
Topo Shoe Adapter

5114-20 — GNSS Bracket for Truck
5114-21 — Ford F-150 2015 & 2016 models



UTV Roll Cage Transporter for GNSS Rods

Easy set-up or disassembly in 10 minutes or less



FEATURES & BENEFITS

- ▶ The RUXWORKS GNSS Rod Transporter™ fits all popular UTVs
- ▶ Mounts easily to either side and installs in 10 minutes or less

- ▶ The UTV bracket has up to 30° of tilt to set your rover rod plumb
- ▶ The pole clamp section is 63-in (160-cm) long and disassembles quickly from the UTV bracket with two quick release pins or two bolts

- ▶ The UTV bracket can stay permanently attached to the UTV
- ▶ Includes a rod clamp that fits all popular rover rods and poles with points and/or topo shoes up to a 2-1/2-inch (6.35-cm) diameter and has a secure, non-marring quick release design



Part No.
5114-40-01

PART NO.	DESIGNED FOR	FITS	WEIGHS	
5114-40-01	Short Truck Bed	Tubular Roll Cage up to 2-inches (5.08 cm)	15.00 lb (6.80 kg)	
5114-40-02	Medium / Standard Truck Bed	Rectangular Roll Cage up to 2 x 4-inch (5.8 x 10-cm)	15.00 lb (6.80 kg)	

Plan Holder

Conveniently organize and store job site materials in your vehicle



FEATURES & BENEFITS

- ▶ Plan holder hangs on the back or front of any vehicle seat

- ▶ Slots which hold four 6-inch (15.24 cm) diameter plans
- ▶ Front pocket accommodates a note pad, phone, or other small items

- ▶ Organizer strap holds pens, pencils, markers, and other necessary tools
- ▶ Weighs 0.95 lb (0.43 kg)



Part No.
8046-10-BLU

8046-10-BLU — Plan Holder

Vials



Vial for TLV™ Locks



5500-064-40 - Vial Assembly
(Complete with 40-min vial)



40-Minute Vial
D11232
Includes screws



20-Minute Vial
D11233
Includes screws



8-Minute Vial
D11234
Includes screws



Vial for QLV™ Locks



5801-052-40 - Vial Assembly
(Complete with 40-min vial)



40-Minute Vial
D11243
Includes screws



20-Minute Vial
D11242
Includes screws



8-Minute Vial
D11241
Includes screws



Vial for 1.25-inch OD Pole Levels



5081-052-40 - Vial Assembly
(Complete with 40-min vial)



40-Minute Vial
D11232
Includes screws



20-Minute Vial
D11233
Includes screws



8-Minute Vial
D11234
Includes screws



Vial for 1.50-inch OD Pole Levels



5070-051-40 - Vial Assembly
(Complete with 40-min vial)



40-Minute Vial
D11232
Includes screws



20-Minute Vial
D11233
Includes screws



8-Minute Vial
D11234
Includes screws



Levels



- ▶ No longer need to look down while traffic is flying by — simply look through the window
- ▶ Features a soft rubber knob on an adjustable clamp that fit most survey poles and most vials
- ▶ The Heads-Up™ level is more comfortable to read; the bubble is direct reading
- ▶ Fits 1- to- 1.25-inch (25.4- to- 31.75-mm) OD poles
- ▶ Weighs 0.40 lb (0.18 kg)



5001-20 — Heads-Up™ Level - 40-minute Vial



- ▶ Features a die-cast aluminum body and adjustable vial
- ▶ Use with track light, robotic instruments, or conventional leveling
- ▶ Fits round or rectangular rods
- ▶ Feature a 40-minute sensitivity
- ▶ Weighs 0.50 lb (0.22 kg)



5001-10 — Standard Rod Level



- ▶ Features a die-cast aluminum body and adjustable vial
- ▶ Suitable for use with track light, robotic instruments, or conventional leveling
- ▶ Fits round or rectangular rods
- ▶ Fits poles with a 1- to- 1.25-inch (25.4- to- 31.75-mm) OD
- ▶ Feature a 40 minute sensitivity vial
- ▶ Weighs 0.10 lb (0.04 kg)



5001-12 — Snap-On Rod Level



Scanner Spheres



FEATURES & BENEFITS

- ▶ 100 mm OD lightweight aluminum sphere
- ▶ Precision design, allowable deviation < 1 mm

- ▶ Female 1/4 x 20 threaded mounting
- ▶ Painted non-glare white
- ▶ Center height is 49 mm for bottom flat

- ▶ Weighs 0.60 lb (0.27 kg)



Part No.
6703-001

6703-001 — 100 mm Scanner Sphere



FEATURES & BENEFITS

- ▶ Lightweight aluminum scanner sphere

- ▶ 230 mm diameter, accuracy < 2 mm
- ▶ Female 5/8 x 11 threaded mounting

- ▶ Painted non-glare white
- ▶ Center height is 114 mm from bottom flat
- ▶ Weighs 2.70 lb (1.22 kg)

6704-001 — 230 mm Scanner Sphere



230 mm Sphere Adapters, Accessories and Case



- ▶ 3-7/8 inch diameter housing
- ▶ 3-1/2 inch ceramic grade 5 magnet
- ▶ 120 pounds of pull force
- ▶ Stainless steel 5/8 x 11 stud
- ▶ Height is 21 mm
- ▶ Weighs 0.95 lb (0.43 kg)



6704-002 — Magnet with 5/8 x 11 Stud



- ▶ Anodized aluminum body
- ▶ Male and female 5/8 x 11 threads
- ▶ Height is 21 mm
- ▶ Center height is 135 mm with 230 mm Sphere (6704-001)
- ▶ Weighs 0.05 lb (0.02 kg)



6704-003 — 21 mm Male and Female 5/8 x 11 Adapter



- ▶ Anodized aluminum body
- ▶ Male and female 5/8 x 11 threads
- ▶ Height is 48 mm
- ▶ Center height is 196 mm with 230 mm Sphere (6704-001) and Tribach Adapter (2070-00)
- ▶ Weighs 0.10 lb (0.04 kg)



6704-004 — 48 mm Male and Female 5/8 x 11 Adapter



- ▶ Includes three 230 mm scanner spheres in a hard case
- ▶ Includes cover bag for each sphere for insulation and scratch protection
- ▶ Airline approved shipping case
- ▶ Weighs 17.60 lb (7.98 kg)



6704-10 — Hard Case and three (3) 230 mm Scanner Spheres



- ▶ 3/8 x 16 stainless steel male stud
- ▶ Three prong tribach interface connection
- ▶ Height is 60.5 mm
- ▶ Height to target with the TX5 / FARO3D achieves 196 mm
- ▶ Weighs 1.35 lb (0.61 kg)



6703-011 — 196 mm HT Tribach Adapter for TX5/FARO3D



- ▶ "Quick Release Adapter" specifically for Trimble TX5 and Faro Focus 3D scanners
- ▶ Quick and safe connection between the scanner instrument and a Gitzo or any tripod with a male 3/8 x 16 thread
- ▶ Rotates smoothly on Delrin® bearing for orientating the instrument

- ▶ Clamp screw is captured and protected from damage
- ▶ Anodized aluminum and stainless steel materials
- ▶ Base has a setscrew to lock base to tripod head
- ▶ Built-in 100-minute level vial on base
- ▶ Weighs 0.70 lb (0.32 kg)



6703-015 — Quick Release Adapter for Trimble TX5 and Faro Focus 3D



100 mm Sphere Prisms, Adapters, Magnets and Kits



- ▶ Lightweight aluminum sphere and ceramic grade 8 magnet
- ▶ Steel cup OD 2.03 inches
- ▶ Stainless steel 1/4 x 20 stud
- ▶ Magnet is chrome coated steel cup and offers 40 pull pounds
- ▶ 100 mm OD roundness <1 mm
- ▶ 1/4 x 20 threaded mounting
- ▶ Painted non-glare white
- ▶ Weighs 0.80 lb (0.36 kg)



6703-10 — 100 mm Scanner Sphere with Magnet

- ▶ 1/4 x 20 stainless steel male stud
- ▶ 5/8 x 11 female connection
- ▶ Height is 86 mm
- ▶ Height to target with 100 mm sphere achieves 135 mm
- ▶ Weighs 0.25 lb (0.11 kg)



6703-003 — 5/8 x 11, 135 mm HT Adapter

- ▶ 1/4 x 20 stainless steel male stud
- ▶ 5/8 x 11 female connection
- ▶ Height is 23.5 mm
- ▶ Height to target with 100 mm sphere achieves 72.5 mm
- ▶ Weighs 0.05 lb (0.02 kg)



6703-005 — 5/8 x 11, 72.5 mm HT Adapter

- ▶ 25 mm silver-coated prism
- ▶ -17.5 mm offset
- ▶ Length is 72.5 mm prism center to connections
- ▶ 5/8 x 11 female and magnetic connection
- ▶ Weighs 0.75 lb (0.34 kg)



6703-012 — 72.5 HT Prism Assembly with Magnet

- ▶ Rubber tips on stainless-steel legs prevent scratching of delicate surfaces
- ▶ Folding legs make tripod very portable
- ▶ Made of anti-corrosive materials
- ▶ Steel-plated washer atop tripod easily attaches to scanner sphere
- ▶ Height is 39 mm
- ▶ Weighs 0.15 lb (0.07 kg)



(Sphere not included)

6703-008 — Scanner Sphere Mini Tripod

- ▶ 1/4 x 20 stainless steel male stud
- ▶ 5/8 x 11 female connection
- ▶ Height is 113 mm
- ▶ Height to target with 100 mm sphere (6703-01) and Tribrach Adapter (2070-00) achieves 196 mm
- ▶ Weighs 0.35 lb (0.16 kg)



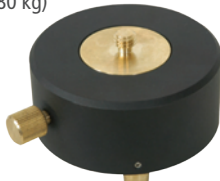
6703-006 — 5/8 x 11, 196 mm HT Adapter

- ▶ 6703-20 includes six 100 mm scanner spheres and six magnets with 1/4 x 20 studs
- ▶ Weighs 6.60 lb (3.00 kg)



6703-20 — 6 piece 100 mm Sphere Kit includes Soft Case

- ▶ Compatible with the TX5
- ▶ Width is 3.12 in (79.3 mm)
- ▶ Height is 34 mm
- ▶ Weighs 1.75 lb (0.80 kg)



2070-02 — 3/8 x 16 Tribrach Adapter

- ▶ Brass washers centers to 6703-002 magnet base connection
- ▶ 90 pounds of pull force
- ▶ Connects to pipes and flat surfaces
- ▶ Weighs 0.90 lb (0.41 kg)



6703-013 — V-Base with Washer Magnet

- ▶ Zinc-plated steel material
- ▶ 1.90 in (48.26 mm) in diameter
- ▶ Thickness is 0.098 in (2.5 mm)
- ▶ 0.24 in (6 mm) countersink hole connection
- ▶ Weighs 0.05 lb (0.02 kg)



6703-007 — Wall Washer Adapter

- ▶ Stainless steel 1/4 x 20 stud
- ▶ Chrome-plated steel cup
- ▶ 2.03 inch OD steel cup
- ▶ Grade 8 ceramic magnet
- ▶ 40 pounds (18.14 kg) of pull force
- ▶ Weighs 0.20 lb (0.09 kg)



6703-002 — Magnet with 1/4 x 20 Stud

- ▶ Pelican® hard shell case features custom foam keeping spheres, prisms, adapters, etc., safe and secure
- ▶ 6703-11 includes ten 100 mm scanner spheres and ten magnets with 1/4 x 20 studs
- ▶ Dimensions: 24.5 x 19 x 9 in (62.3 x 48.3 x 22.9 cm)
- ▶ Weighs 22.00 lb (10.00 kg)

6703-11 — 10 piece 100 mm Sphere Kit includes Hard Case
6703-014 — Pelican Case for 100 mm Spheres (spheres sold separately)

- ▶ Six padded compartments (for 100 mm spheres, sold separately)
- ▶ Made from 1000D Cordura with 2 inch padded foam and includes a carrying handle
- ▶ Stowable straps (cases can connect together)
- ▶ Dimensions: 16 x 11 x 8 in (40.64 x 27.94 x 20.32 cm)
- ▶ Weighs 2.00 lb (0.91 kg)



8082-01-ORG — Soft Case for 100 mm Scanner Spheres

- ▶ Pelican® hard shell case features custom foam keeping spheres, prisms, adapters, etc., safe and secure
- ▶ Weighs 14.00 lb (6.36 kg)



6703-014 — Pelican Case for 100 mm Spheres (spheres sold separately)

Scanner Targets



6705-10

FEATURES & BENEFITS

- ▶ Adjustable tilting target, for affixing to pole top and used in multiple survey jobs.

- ▶ Contrasting 6" (152mm) Black and White pattern
- ▶ Matte non-glare target material
- ▶ Adjustable tilting axis

- ▶ Anodized aluminum yoke and target plate
- ▶ Axis height 135mm
- ▶ 5/8-11 threaded base
- ▶ Weight 0.90 lbs, 0.41 kg

6705-10 — Target, Tilting, 6" B/W



6705-20

FEATURES & BENEFITS

- ▶ Easy-to-use self-adhesive target, which can be fixed to measuring points.
- ▶ Ideal for monitoring work where you have to leave targets in position over long periods.

- ▶ Contrasting 6" (152mm) Black and White pattern
- ▶ Matte non-glare target material
- ▶ Material is 3M 3.2-mil vinyl films with a pressure-sensitive adhesive and air release channels for easier, bubble-free

- application. Easy to remove, leaves no adhesive.
- ▶ Weather resistant and UV stable.
- ▶ Space to mark target ID
- ▶ Adhesive backed
- ▶ Package weight: 0.25 lbs (0.11 kg)

6705-20 — Target, Adhesive, 150X200mm, B/W, 10pk



360° Robotic Prism Assembly

Copper-coated 35 mm prisms



FEATURES & BENEFITS

- ▶ Includes six 35 mm prisms
- ▶ 0 offset

- ▶ Copper-coated for moisture prevention

- ▶ Protective urethane bumper in yellow



Part No.
6401-00-YEL

PART NO.	PRISM HEIGHT	DESIGNED FOR
6401-00-YEL	77 mm	Topcon®
6401-03-YEL	135 mm	Spectra Precision®



Carbon Fiber Robotics Poles

Features carbon fiber and TLV locking mechanism



FEATURES & BENEFITS

- ▶ Graduated to read direct for a 135 mm prism height
- ▶ Adapters will achieve other prism heights

- ▶ Carbon fiber pole offers a stainless steel pin which locks the inner pole
- ▶ Features TLV™ lock mechanism with 40-minute vial built-in

- ▶ Optional outer graduations in metric (GM) or 10ths/100ths (GT)
- ▶ Order 8160-00-ORG for carrying case



Part No.
5129-52

PART NO.	GRADS	SECTIONS	PIN LOCKING	OUTER GRADS	LENGTH	WEIGHS
5129-52	Dual	1	Every 0.5 ft	10ths/100ths (GT)	4.97 ft - 8.53 ft	2.30 lb (1.04 kg)
5129-53	Metric	1	Every 20 cm	Metric (GM)	1.53 m - 2.6 m	2.30 lb (1.04 kg)
5129-72	Dual	2	Every 0.5 ft	None	5.18 ft - 11.81 ft	3.30 lb (1.50 kg)
5129-73	Metric	2	Every 20 cm	None	1.58 m - 3.6 m	3.30 lb (1.50 kg)



Accessories for
Robotics Gear

- 5/8 X 11 aluminum prism height adapters allow the base pole to be used with other manufacturers' 360° prisms



- 2090-01 — For Topcon Users w/ 77 mm Prism
2090-02 — For Leica Users w/86 mm Prism
2090-04 — Users w/115 mm Prism
2090-06 — Convert Robotics to GNSS Pole (not shown)
2090-07 — For Topcon ATP1/2 with 50 mm Prism



- This lightweight bipod is used to keep a GNSS or robotic pole off the ground when not in use
► Weighs 0.90 lb (0.41 kg)



5217-15-ABK — 12 inch Open Clamp Bipod

Telescopic Carbon Fiber
Prism Pole

Carbon fiber poles are approximately 30% lighter than similar aluminum poles



FEATURES & BENEFITS

- Adjustable tip that will adjust to a prism height of 65 mm to 115 mm

- TLV locking and dual graduations and OD is 1.27 in (32 mm)
► Extends 8.53 ft (2.60 m)

- Collapses to 4.97 ft (1.51 m)
► Weighs 2.30 lb (1.05 kg)

Part No.
5129-54

5129-54 — Adjustable Tip Carbon Fiber Pole



Mini Poles

Compact, easy to set up, and convenient to store and transport



FEATURES & BENEFITS

- Mini poles are easy to use
► Adjustable or fixed-tip poles

- Light weight and convenient to transport and store
► 40-minute bubble vials

- Powder-coated and silk screened aluminum

Part No.
5500-23

PART NO.	HEIGHT	GRADS	LOCK TYPE	PRISM HEIGHT	WEIGHS
5500-23	2.70 ft - 5.10 ft (0.82 - 1.55 m)	Dual	TLV	50 mm - 135 mm	2.30 lb (1.04 kg)
5010-00-RED	1.28 ft (0.39 m)	N/A	N/A	N/A	1.50 lb (0.68 kg)
5010-00-FLY	1.28 ft (0.39 m)	N/A	N/A	N/A	1.50 lb (0.68 kg)
5010-01	4.7 inches (120 mm)	N/A	N/A	25 mm	0.40 lb (0.02 kg)
5700-21	2.26 ft - 4.8 ft (0.7 - 1.5 m)	Dual	Quick-Release	50 mm - 135 mm	2.33 lb (1.80 kg)

Swiss-Style QLV
Prism Poles

QLV Locking Mechanisms



FEATURES & BENEFITS

- Swiss-style quick release stud
Reads direct for any 86 mm height prisms

- The small-diameter, 25 mm bottom section fits Leica slide-on controller brackets
► QLV™ locking mechanisms

- Powder-coated and silk screened aluminum
► Lower lock features a 40-minute vial

Part No.
5802-10

PART NO.	LENGTH	TIP	TYPE	GRADS	WEIGHS
5802-10	8 ft	Swiss-Style	Aluminum	Dual	2.50 lb (1.13 kg)
5802-20	12 ft	Swiss-Style	Aluminum	Dual	3.55 lb (1.61 kg)



Swiss-Style TLV and Twist-Lock Prism Poles

Twist Lock with Vial (TLV)



FEATURES & BENEFITS

- ▶ Swiss-style tip (for 86 mm prism heights) for GPH1-type prisms

- ▶ 1.25- or 1.50-inch (31.75- or 38.1-mm) outside diameter
- ▶ Comes in 1 or 3 sections

- ▶ Dual or metric graduations
- ▶ TLV™ or Twist-Lock mechanisms
- ▶ The popular TLV locking system provides simple but secure locking



Part No.
5501-11

PART NO.	SECTIONS	LOCK STYLE	LENGTH	OD	GRADS	WEIGHS	
5501-11	1	TLV	8.53 ft - 4.97 ft (2.60 m - 1.51 m)	1.25 inch (31.75 mm)	Dual	3.30 lb (1.50 kg)	
5521-11	1	TLV	2.60 m - 1.51 m	31.75 mm	Metric	3.30 lb (1.50 kg)	
5503-30	3	Twist-Lock	15.25 ft - 5.41 ft (4.65 m - 1.65 m)	1.50 inch (38.1 mm)	Dual	7.60 lb (3.45 kg)	
5523-30	3	Twist-Lock	4.65 m - 1.65 m	38.1 mm	Metric	7.60 lb (3.45 kg)	

Quick-Release Telescopic Prism Poles

Vials are on the locks, out of the way of the instruments on the pole



FEATURES & BENEFITS

- ▶ Quick-Release locking mechanism with 40-minute vial

- ▶ Adjustable tension via set screw in the handle and another set screw to assist in keeping the spring in position

- ▶ Quick-Release handle lock allows for a simple and fast setup
- ▶ Constructed of powder-coated and silk screened aluminum



Part No.
5700 Series

PART NO.	GRADS	SECTIONS	TIP	EXTENDED	COLLAPSED	WEIGHS	
5700-10	Dual	1	Adjustable	8.53 ft (2.60 m)	4.97 ft (1.52 m)	3.30 lb (1.50 kg)	
5720-10	Metric	1	Adjustable	8.53 ft (2.60 m)	4.97 ft (1.52 m)	3.30 lb (1.50 kg)	
5700-20	Dual	2	Adjustable	11.81 ft (3.60 m)	5.18 ft (1.58 m)	5.10 lb (2.30 kg)	

TLV and Twist-Locking Telescopic Prism Poles

The popular TLV™ locking system provides simple but secure locking



FEATURES & BENEFITS

- ▶ The aluminum twisting lock with vial (TLV) pole is wear-resistant for long life

- ▶ The soft rubber knob is easy to tighten or loosen, even when wearing gloves
- ▶ TLV locks feature a convenient 40-minute vial built into the lock

- ▶ Made of quality aluminum tubing
- ▶ Powder-coated red and white
- ▶ Vials may be switched out – see page 13 for options



Part No.
5500-11

PART NO.	SECTIONS	TIP	EXTENDED	COLLAPSED	GRADS	WEIGHS	
5500-11	1	Adjustable	8.53 ft (2.60 m)	4.97 ft (1.52 m)	Dual	3.30 lb (1.50 kg)	
5512-11	1	Fixed	8.53 ft (2.60 m)	4.97 ft (1.52 m)	Dual	3.30 lb (1.50 kg)	
5520-11	1	Adjustable	8.53 ft (2.60 m)	4.97 ft (1.52 m)	Metric	3.30 lb (1.50 kg)	
5500-21	2	Adjustable	11.81 ft (3.60 m)	5.18 ft (1.58 m)	Dual	5.10 lb (2.32 kg)	
5520-21	2	Adjustable	11.81 ft (3.60 m)	5.18 ft (1.58 m)	Metric	5.10 lb (2.32 kg)	
5500-30	3	Adjustable	15.25 ft (4.65 m)	5.41 ft (1.65 m)	Dual	7.60 lb (3.45 kg)	
5520-30	3	Adjustable	15.25 ft (4.65 m)	5.41 ft (1.65 m)	Metric	7.60 lb (3.45 kg)	

Compression Lock
Telescopic Prism Poles

Constructed of brass and aluminum



FEATURES & BENEFITS

- Compression locking mechanism
- Constructed of sturdy aluminum tubing and a two-stage adjustable top-threaded tip

- Adjustable Tip
- Single (1) section pole
- Extends 8.53 ft (2.60 m)
- Collapses 4.97 ft (1.516 m)
- Dual graduations

- Finished with electrostatic powder paint coating on the outer pole and permanent silk-screened grads on the inner pole
- Weighs 3.30 lb (1.50 kg)

Part No.
5600-10

5600-10 — Compression Prism Pole

QLV Locking
Prism Poles

Simple to adjust bubble and lever tension



QLV lock body



Fixed Tip



Adjustable Tip

FEATURES & BENEFITS

- The QLV™ (Quick Lever with Vial) lock allows fast, simple setups
- Simple to adjust bubble and lever tension

- Includes a lock with 40-minute level vial, adjustable, or fixed tip and your choice of dual (10ths) or metric graduations (cm)

- Easy locking
- Finished with electrostatic powder paint coating on the outer pole and permanent silk-screened grads on the inner pole

Part No.
5801-10

PART NO.	SECTIONS	TIP	EXTENDS	COLLAPSES	GRADS	WEIGHS	
5801-10	1	Adjustable	8.53 ft (2.60 m)	4.97 ft (1.516 m)	Dual	2.95 lb (1.50 kg)	
5813-10	1	Fixed	8.53 ft (2.60 m)	4.97 ft (1.516 m)	Dual	2.95 lb (1.50 kg)	

Ultralite Prism Poles

Non-conductive fiberglass



FEATURES & BENEFITS

- The lightest pole offered by SECO
- Included in this package is Seco's patented Topo Boot®

- Reduced weight SECO TLV™ lock
- Features a 40-minute adjustable vial, a soft touch knob, and an adjustable 5/8 x 11 tip

- The inner and outer poles are constructed of lightweight non-conductive fiberglass
- Vials may be switched out – see page 14 for options

Part No.
5540-10

PART NO.	SECTIONS	TIP	LENGTH	VIAL	GRADS	WEIGHS	
5540-10	1	Adjustable	8.58 ft (2.62 m)	40-minute	Dual	1.95 lb (0.88 kg)	
5541-10	1	Adjustable	2.62 m (8.58 ft)	40-minute	Metric	1.95 lb (0.88 kg)	
5540-20	2	Adjustable	11.81 ft (3.60 m)	40-minute	Dual	2.50 lb (1.13 kg)	
5541-20	2	Adjustable	3.60 m (11.81 ft)	40-minute	Metric	2.50 lb (1.13 kg)	
5540-30	3	Adjustable	15.27 ft (4.65 m)	40-minute	Dual	3.15 lb (1.43 kg)	
5541-30	3	Adjustable	4.65 m (15.27 ft)	40-minute	Metric	3.15 lb (1.43 kg)	

Contractor Series TLV Prism Poles

Import TLV™ prism poles



FEATURES & BENEFITS

- ▶ These 'no-frills' imported poles are designed to give service in the field at a lower purchase price

- ▶ TLVs and Twist-Locks include 40-minute level vials
- ▶ Aluminum outer and inner pole
- ▶ Hardened steel points

- ▶ Your choice of metric (cm) or dual (cm/10ths) graduations
- ▶ Traditional red and white color



Part No.
5530-10

PART NO.	SECTIONS	TIP	LENGTH	POLE TYPE	GRADS	WEIGHS	
5530-10	1	Adjustable	8.53 ft (2.60 m)	Aluminum	Dual	2.67 lb (1.21 kg)	
5531-10	1	Adjustable	2.60 m	Aluminum	Metric	2.67 lb (1.21 kg)	
5530-20	2	Adjustable	11.81 ft (3.60 m)	Aluminum	Dual	3.65 lb (1.66 kg)	
5531-20	2	Adjustable	3.60 m	Aluminum	Metric	3.65 lb (1.66 kg)	
5530-30	3	Adjustable	15.25 ft (4.65 m)	Aluminum	Dual	5.38 lb (2.44 kg)	
5531-30	3	Adjustable	4.65 m	Aluminum	Metric	5.38 lb (2.44 kg)	

Contractor Series Compression Lock Poles

Traditional Compression lock import prism poles



FEATURES & BENEFITS

- ▶ These 'no-frills' imported poles are designed to give service in the field at a lower purchase price

- ▶ Your choice of metric (cm) or dual (cm/10ths) graduations
- ▶ Aluminum outer and inner pole
- ▶ 40-minute level vials

- ▶ Adjustable tip
- ▶ Hardened steel points
- ▶ Red and white color



Part No.
5631-10

PART NO.	SECTIONS	TIP	LENGTH	POLE TYPE	GRADS	WEIGHS	
5631-10	1	Adjustable	2.60 m (8.53 ft)	Aluminum	Metric	2.65 lb (1.20 kg)	
5631-20	2	Adjustable	3.60 m (11.81 ft)	Aluminum	Metric	3.45 lb (1.56 kg)	
5631-30	3	Adjustable	4.65 m (15.25 ft)	Aluminum	Metric	5.00 lb (2.27 kg)	

Offset Tools



- ▶ Used with total stations and prism poles to help get accurate elevation measurements in hard-to-reach places such as sewer lines
- ▶ Has an adjustable centerline, 1.60 to 1.00-ft (48.76 to 30.48-cm) in 0.20-ft (6.09-cm) increments
- ▶ Constructed of anodized 1/2 inch thick aluminum
- ▶ Includes brass male 5/8 x 11 threaded post and a stainless steel 5/8 x 11 Heli-Coil®
- ▶ Weighs 1.15 lb (0.52 kg)



Maintains Exact
Pole Elevation
Readings!

5198-163 — Adjustable Offset Bar



- ▶ Perform odd setups and stay away from dangerous situations with the Offset Pole Holder Kit
- ▶ Combine the kit with any 5/8 x 11 threaded pole and a Heads-Up™ Level (PN 5001-20, page 13) for a safe and sturdy setup
- ▶ A padded case, hex wrench, and an adapter plate for instrument tripods is included
- ▶ Weighs 1.79 lb (0.81 kg)



5198-157 — Offset Pole Holder Kit





Prism Adapters, Tips and Topo Shoes

- ▶ Adapts Swiss-style snap-on prisms to 5/8 x 11 tribrach adapter or prism pole
- ▶ Weighs 0.06 lb (0.03 kg)



2080-SS — Wild Prism Adapter 

- ▶ 5/8 x 11 adapter
- ▶ Weighs 0.06 lb (0.03 kg)



5180-00 — Double Male Adapter 

- ▶ Adapts Swiss-style prism poles to 5/8 x 11
- ▶ Weighs 0.06 lb (0.03 kg)



2090-00 — Wild Prism Pole Adapter 

- ▶ 3.37-inch (85.6-mm) steel body
- ▶ Weighs 0.30 lb (0.14 kg)



5190-00 — Prism Pole Point 

- ▶ 3.37-inch (85.6-mm) aluminum body
- ▶ Weighs 0.34 lb (0.15 kg)



5191-00 — Prism Pole Topo Shoe 

- ▶ 3.37-inch (85.6-mm) aluminum with steel tip (91605)
- ▶ Weighs 0.01 lb (0.004 kg)
- ▶ The Topo-Boot® (91605) screws over the precision point made of black nylon and increases the area of the point for the use on soft surfaces in topo shots
- ▶ Weighs 0.05 lb (0.02 kg)



91605 — Aluminum Prism Pole Point and Steel Tip 
91601 — Topo-Boot 

- ▶ 3.37-inch (85.6-mm) length
- ▶ 64 mm OD with steel body
- ▶ Weighs 1.26 lb (0.57 kg)



5192-00 — Wide Base Topo Shoe 

- ▶ Allows easy conversions from 'control' to 'topo' surveys



5192-02 — Topo Shoe and Point Combo 



- ▶ 3.37-inch (85.6-mm) steel body, removable point
- ▶ Weighs 0.30 lb (0.14 kg)



5194-00 — Prism Pole Point with Replaceable Plumb Bob Point 

- ▶ 3.37-inch (85.6-mm) anodized aluminum body, dull or steel point
- ▶ Weighs 0.16 lb (0.07 kg)



5194-03 — Lightweight Prism Pole Point with Replaceable Steel Point Tip 
5194-07 — Lightweight Prism Pole Point with Replaceable Dull Point Tip 

- ▶ Hardened steel replacement point for 5194-series
- ▶ Weighs 0.06 lb (0.03 kg)



5194-003 — Prism Pole Sharp Point 

- ▶ The point features an aluminum body and an easy-to-replace steel point
- ▶ Male 5/8 x 11 Thread
- ▶ Weighs 0.16 lb (0.07 kg)



5194-04 — Point Assembly 

- ▶ This point features an anodized aluminum body and an easy-to-replace steel point
- ▶ Weighs 0.16 lb (0.07 kg)



5194-05 — Prism Pole Point, Sharp 

- ▶ 3.37-inch (85.6-mm) aluminum body
- ▶ Removable point
- ▶ Weighs 0.10 lb (0.05 kg)



5194-01 — Aluminum Replaceable Point 

- ▶ The Center Punch Point fits all poles or products with male 5/8 x 11 threads
- ▶ The hardened steel point will mark all metal and non-metal surfaces
- ▶ Weighs 0.20 lb (0.09 kg)



5194-10 — Center Punch Point
5194-10-002 Replacement Point 

- ▶ The Delrin® Adapter can be used when you want to increase the outside diameter (OD) of a pole from 1-inch to 1.25-inches or if you have a 1 inch OD pole and want to use a Claw™ pole clamp
- ▶ Can be used with Quick-Release Claw Cradles and Clamps or the Ball-and-Socket Claw Combo
- ▶ Weighs 0.03 lb (0.01 kg)



D11145 — Delrin 1-inch Pole Claw Clamp Adapter 

- ▶ 5/8 x 11 Double Female Adapter
- ▶ Weighs 0.08 lb (0.04 kg)



5181-00 — Double Female Adapter 

- ▶ 5/8 x 11 Female to 1/4 x 20 Female Adapter
- ▶ 5/8 x 11 Male to 1/4 x 20 Male Adapter
- ▶ Weighs 0.20 lb (0.09 kg)



2131-00 — Prism Pole Adapter - Male 
2131-01 — Prism Pole Adapter - Female 

- ▶ Features an 'L-Bracket' to rest the prism pole point on and the adjustable top piece
- ▶ Convenient for adjusting and calibrating pole vials in the office
- ▶ Use the adjustable top to center your pole before adjusting the bubble
- ▶ Weighs 1.00 lb (0.45 kg)



5195-01 — Pole Peg Adjusting Jig 

- ▶ Stedi-Rest® fits any 1.25 to 1.5 inch (31.75 to 38.1-mm) pole and can take the place of three separate products
- ▶ Weighs 0.15 lb (0.07 kg)



91641 — Stedi-Rest® 

- ▶ 2-inch (50.8-mm) diameter chrome-plated steel housing with grade-8 ceramic magnet ring
- ▶ Standard topo shoe length, 3.375-inch (85.7-mm)
- ▶ Magnet has 40 pounds of pull force on 3/8-inch (9.5-mm) clean steel plate
- ▶ Female 5/8 x 11 threads are machined brass
- ▶ Black anodized aluminum alloy 6061 body
- ▶ Tilting pivot allows measurement on sloped or flat pipe surfaces
- ▶ Weighs 0.55 lb (0.25 kg)



5193-04 — Tilting Magnetic Topo Shoe 

- ▶ This prism allows for easy determination of right angle points or perpendicular points between two targets



4900-00 — Double Right-Angle Prism 

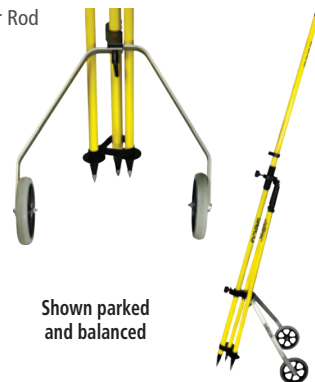
Range Pole Accessories

- ▶ The Rodrest is a self-retracting 'kickstand' for survey rods
 - ▶ Activated by simply pushing down a few inches on the handle
 - ▶ Weighs 1.55 lb (0.70 kg)
- Pole not included.



5214-01 — Gardener Rod Rest 1.25-inch OD

- ▶ Quickly connect this new accessory to your Rover Rod
 - ▶ Holds the Rod upright when you need to "park"
 - ▶ Makes moving from point to point easy, fast and tireless
 - ▶ Six inch diameter solid wheels, travels over hard and rough surfaces
 - ▶ Folds for easy storage when not in use
 - ▶ Legs made of anodized aluminum bar
 - ▶ Weight 3.1 lbs (1.4 kg)
 - ▶ Reduce your daily effort with this new product designed to save energy and effort in the field
- Pole and Bipod not included.



Shown parked and balanced

5125-058 — Pole Transporter

Pole Extensions

Aluminum, carbon fiber or fiberglass extensions

FEATURES & BENEFITS

- ▶ The pole extensions have 5/8 x 11 female threads on the bottom and 5/8 x 11 male

- threads on the top to allow more added sections
- ▶ Choose powder-painted aluminum, carbon fiber, or fiberglass



Part No. 5182-001

PART NO.	OUTSIDE DIAMETER	LENGTH	POLE TYPE	WEIGHS	
5182-001	1 in (25 mm)	3 in (7.62 cm)	Aluminum	0.40 lb (0.18 kg)	
5132-00-ACL	1 in (25 mm)	6 in (15.2 cm)	Aluminum	0.50 lb (0.23 kg)	
5130-01-FLY	1 in (25 mm)	1 ft (30.5 cm)	Aluminum	1.00 lb (0.45 kg)	
5902-00-FLY	1 in (25 mm)	50 cm (19.69 in)	Aluminum	0.70 lb (0.32 kg)	
5131-01-FLY	1 in (25 mm)	2 ft (61 cm)	Aluminum	1.10 lb (0.50 kg)	
5901-00-FLY	1 in (25 mm)	1 meter (39.37 in)	Aluminum	1.10 lb (0.50 kg)	
5110-01-FLY	1 in (25 mm)	4 ft (1.22 m)	Aluminum	1.30 lb (0.59 kg)	
5145-00-FLY	1.25 in (32 mm)	25 cm (9.84 in)	Aluminum	0.90 lb (0.41 kg)	
5130-00-FLY	1.25 in (32 mm)	1 ft (30.5 cm)	Aluminum	1.00 lb (0.45 kg)	
5144-00-FLY	1.25 in (32 mm)	50 cm (19.69 in)	Aluminum	1.00 lb (0.45 kg)	
5131-00-YEL	1.25 in (32 mm)	2 ft (61 cm)	Aluminum	1.10 lb (0.50 kg)	
5143-00-FLY	1.25 in (32 mm)	1 meter (39.37 in)	Aluminum	1.30 lb (0.59 kg)	
5110-00-FLY	1.25 in (32 mm)	4 ft (1.22 m)	Aluminum	1.30 lb (0.59 kg)	
5145-04	1 in (25 mm)	20 cm (7.87 in)	Carbon Fiber	0.30 lb (0.14 kg)	
5145-03	1 in (25 mm)	25 cm (9.84 in)	Carbon Fiber	0.35 lb (0.16 kg)	
5143-03	1 in (25 mm)	1 meter (39.37 in)	Carbon Fiber	0.70 lb (0.32 kg)	
5145-02	1.25 in (32 mm)	25 cm (9.84 in)	Carbon Fiber	0.35 lb (0.16 kg)	
5144-02	1.25 in (32 mm)	50 cm (19.69 in)	Carbon Fiber	0.50 lb (0.23 kg)	
5143-02	1.25 in (32 mm)	1 meter (39.37 in)	Carbon Fiber	0.70 lb (0.32 kg)	
5130-10	1.25 in (32 mm)	0.20 meter (7.87 in)	Fiberglass	0.34 lb (0.15 kg)	

Imported Range Poles

Contractor Series of Extendible Section Poles

- ▶ Single 4-foot (1.22-m) section range pole
- ▶ 1.13-in (29-mm) outside diameter
- ▶ Includes bag (no point included)
- ▶ Weighs 1.50 lb (0.68 kg)

5160-02-WOR — Contractor Series 4-ft Range Pole

- ▶ Two 4-ft (1.22 m) sections creating 8-ft (2.44-m) range pole
- ▶ 1.13-in (29-mm) outside diameter
- ▶ Includes point and bag
- ▶ Weighs 3.40 lb (1.54 kg)

5140-02-WOR — Contractor Series 8-ft Range Pole

- ▶ Three 4-foot (1.22-m) sections creating 12-ft (3.66-m) range pole
- ▶ 1.13-in (29-mm) outside diameter
- ▶ Includes point and bag
- ▶ Weighs 5.00 lb (2.27 kg)

5150-02-WOR — Contractor Series 12-ft Range Pole

Bipods & Tripods



- ▶ Carbon Fiber Thumb Release Bipod uses the same design concepts as the SECO aluminum Thumb Release Bipod, but weighs less
- ▶ 1- to 1.25-inch (25.6- to 32-mm) diameter poles attach easily through the open clamp
- ▶ 1.5-inch (38.1-mm) OD poles can be loaded through the top
- ▶ Collapses to 43-inches (109-cm)
- ▶ Legs (independently) extend to 6-feet (1.8-m)
- ▶ Weighs 4.10 lb (1.86 kg)



Now with No-Crush Head

5219-03 — Carbon Fiber Thumb Release Bipod

- ▶ The Carbon Fiber Thumb Release Tripod features a large 5-lobe soft touch rubber clamping knob, and legs of super strong, lightweight carbon fiber
- ▶ Legs collapses to 43-inches (109-cm)
- ▶ Legs extend to 6-ft (1.8-m)
- ▶ Weighs 4.10 lb (1.86 kg)



5219-05 — Carbon Fiber Thumb Release Tripod

- ▶ This tripod is ideal for use with poles under 24-inches (61-cm) long 1- to 1.5-inch (25.4- to 38.1-mm) diameter poles thread easily through the open clamp on top
- ▶ Legs are fixed at 12-inches (30.5-cm) each
- ▶ Includes stainless steel clamp screw and rubber tips
- ▶ Rod not included
- ▶ Weighs 1.30 lb (0.60 kg)



5218-15-ABK — Mini Tripod with 12 inch Legs

- ▶ This open-clamp head bipod features a Quick Lever™ locking mechanism that makes attaching or detaching the pole lightning fast — the lever cam action is mechanically simple and holds tight
- ▶ Locking mechanism is made of non-marring Delrin® with an EPDM 80-durometer rubber plug for positive grip
- ▶ Works with 1.25-inch (32-mm) OD poles
- ▶ Pole sold separately
- ▶ Weighs 4.20 lb (1.90 kg)
- ▶ Available in flo yellow, flo orange, red and yellow (FLY, FLO, RED, YEL)



Now with No-Crush Head

5217-50-XXX — Quick Lever Bipod with Thumb Release Legs

- ▶ The Mini Bipod utilizes the same design concepts as the popular 5217-04 bipod, just shorter (see below)
- ▶ Poles 1- to 1.25-inch (25.6- to 32-mm) diameter attach easily through the open clamp
- ▶ Poles 1.5-inch (38.1-mm) OD can load through the top
- ▶ Collapses to 25 inches (63.5 cm)
- ▶ Extends to 35 inches (88.9 cm)
- ▶ Leg clip is included (5217-30)
- ▶ Order 8180-20-ORG for carrying case
- ▶ Weighs 3.50 lb (1.60 kg)



5217-05-FLO — Thumb Release Mini Bipod
5217-05-FLY — Thumb Release Mini Bipod
5217-05-RED — Thumb Release Mini Bipod
5217-05-YEL — Thumb Release Mini Bipod

SECO Bipods with No-Crush Head Design

- ▶ New contoured head design prevents crushing of carbon fiber range or prism poles even when excess force is used
- ▶ All metal design is "form fitting" for all popular pole sizes.
- ▶ Extend to 6 feet (1.8 m) and collapse to 43 inches (109 cm)
- ▶ Weighs 4.25 lb (1.93 kg)
- ▶ Available in FLY, YEL, ORG and RED
- ▶ Available on 5217-04-XXX, 5219-03 and 5217-50-XXX



NEW IMPROVED

To upgrade any existing SECO bipod to the new head design, an upgrade kit is available: PN 5217-072



- ▶ The tripod features a ball-and-socket head, which makes leveling a bubble easy
- ▶ Legs extend from 2.62- to 4.17-ft (80-cm to 1.3-m)
- ▶ The rubberized jaws hold a pole (up to 2-inch (51-mm) OD) firmly in place
- ▶ Weighs 2.65 lb (1.20 kg)



Alligator clamp with rubberized jaws!



5214-00 — Alligator Clamp Prism Pole Tripod

- ▶ The bipod leg clip easily attaches to the base of any 1.25-inch (32-mm) OD prism or antenna pole
- ▶ The bipod legs snap into the clip making the system convenient for transport or storage
- ▶ Weighs 0.04 lb (0.02 kg)



5217-30 — Bipod Leg Clip

- ▶ A surveyor can set up a free-standing GNSS antenna pole or prism pole
- ▶ Poles 1- to 1.25-inch (25.6- to 32-mm) OD attach through the open clamp
- ▶ 1.5-inch (38.1 mm) OD poles can be loaded through the top
- ▶ Legs (independently) extend to 6 feet (1.8 m)
- ▶ Collapses to 43 inches (109 cm)
- ▶ Order 8180-20-ORG for carrying case
- ▶ Weighs 4.25 lb (1.93 kg)



Now with No-Crush Head

5217-04-FOR — Original Thumb Release Bipod
5217-04-FLY — Original Thumb Release Bipod
5217-04-RED — Original Thumb Release Bipod
5217-04-YEL — Original Thumb Release Bipod
5217-40-FLY — Thumb Release Bipod
5217-40-RED — Thumb Release Bipod
5217-40-YEL — Thumb Release Bipod

- ▶ Thumb-Release™ Tripods creates free-standing GNSS antenna poles or prism poles
- ▶ The thumb lock design allows adjustment of tension without disassembly of the leg
- ▶ Universal head accommodates poles from 1- to 1.5-inch (25.6- to 38.1-mm) OD
- ▶ Legs extend (independently) to 6-ft (1.8-m)
- ▶ Feature large, smooth, thumb release buttons
- ▶ Constructed of powder-coated aluminum
- ▶ Weighs 6.00 lb (2.60 kg)



5218-02-FLY — Original Thumb Release Tripod
5218-02-FOR — Original Thumb Release Tripod
5218-02-RED — Original Thumb Release Tripod
5218-02-YEL — Original Thumb Release Tripod
5218-40-FLY — Thumb Release Tripod
5218-40-RED — Thumb Release Tripod
5218-40-YEL — Thumb Release Tripod

Premier Prism Assemblies

62 mm Rear Screw Lock



FEATURES & BENEFITS

- ▶ Tilting holder is anodized aluminum and features a 62 mm copper-coated canister prism

- ▶ Features an improved brass locking thumb screw design and a light but durable metal holder
- ▶ Tilting axis height is 115 mm

- ▶ Mounted in either 0 or -30 mm offset positions



Part No.
6402-02-FLB

PART NO.	TARGET COLOR	TARGET SIZE	WEIGHS	
6402-02-FLB	Flo Yellow with Black	6 x 9 in	1.75 lb (0.79 kg)	
6402-02-FOB	Flo Orange with Black	6 x 9 in	1.75 lb (0.79 kg)	
6402-02-YLB	Yellow with Black	6 x 9 in	1.75 lb (0.79 kg)	
6422-02-FLB	Flo Yellow with Black	5.5 x 7 in	1.59 lb (0.72 kg)	
6422-02-FOB	Flo Orange with Black	5.5 x 7 in	1.59 lb (0.72 kg)	
6422-02-YLB	Yellow with Black	5.5 x 7 in	1.59 lb (0.72 kg)	

Premier Prism Assembly

62 mm Rear Lever Lock



FEATURES & BENEFITS

- ▶ The heavy-duty 62 mm silver-coated prism is sealed in a strong canister with an o-ring to prevent water and dust from getting inside

- ▶ Incorporates a simple rear-locking stainless steel lever mechanism that is easy to set while adjusting the prism and target tilt
- ▶ Prism can be mounted in either 0 or -30 mm offset positions

- ▶ 115 mm tilting axis height
- ▶ Two target sizes and three color combinations are available



Part No.
6402-20-FLB

PART NO.	TARGET COLOR	TARGET SIZE	WEIGHS	
6402-20-FLB	Flo Yellow with Black	6 x 9 in	1.75 lb (0.79 kg)	
6402-20-FOB	Flo Orange with Black	6 x 9 in	1.75 lb (0.79 kg)	
6402-20-YLB	Yellow with Black	6 x 9 in	1.75 lb (0.79 kg)	
6422-20-FLB	Flo Yellow with Black	5.5 x 7 in	1.59 lb (0.72 kg)	
6422-20-FOB	Flo Orange with Black	5.5 x 7 in	1.59 lb (0.72 kg)	
6422-20-YLB	Yellow with Black	5.5 x 7 in	1.59 lb (0.72 kg)	

Prism Premier Assembly Strobe

62 mm blinking strobe prism assembly



FEATURES & BENEFITS

- ▶ Combines the premier target and holder with a strobe prism

- ▶ Features a blinking strobe prism with an LED light that flashes every 0.5-second
- ▶ This prism can be purchased separately (6416-00, page 32)

- ▶ Perfect for low light conditions
- ▶ Tilting axis height is 115 mm
- ▶ Weighs 1.35 lb (0.62 kg)



Part No.
6402-03-FLB

PART NO.	TARGET COLOR	TARGET SIZE	
6402-03-FLB	Flo Yellow with Black	6 x 9 in	
6402-03-FOB	Flo Orange with Black	6 x 9 in	
6402-03-YLB	Yellow with Black	6 x 9 in	

Premier Prism Assembly

-35 mm to work with Trimble and Zeiss Total Stations



FEATURES & BENEFITS

- Features a -35 mm offset and a prism accuracy of <5 seconds
- Mounting base features standard female 5/8 x 11 threads

- Tilting holder is constructed of anodized aluminum
- Height of the prism in the holder is 100 mm

- 62 mm silver-coated prism is encased in a heavy-duty canister with M20 threads
- Weighs 1.75 lb (0.80 kg)
- Nodal



Part No.
6402-05-FLB

PART NO.	TARGET COLOR	TARGET SIZE	
6402-05-FLB	Flo Yellow with Black	6 x 9 in	
6402-05-FOB	Flo Orange with Black	6 x 9 in	
6402-05-YLB (shown)	Yellow with Black	6 x 9 in	

Premier Prism Assembly

-30 and 0 mm to work with Nikon, Topcon & Sokkia Total Stations



FEATURES & BENEFITS

- 62 mm copper-coated prism is encased in a heavy-duty canister with M20 threads

- Features a -30 and 0 mm offset
- Height of the prism in the holder is 100 mm
- Tilting holder is constructed of anodized aluminum

- Prism accuracy of <5 seconds
- Mounting base features standard female 5/8 x 11 threads
- Weighs 1.75 lb (0.80 kg)



Part No.
6402-06-YLB

PART NO.	TARGET COLOR	TARGET SIZE	
6402-06-FLB	Flo Yellow with Black	6 x 9 in	
6402-06-FOB	Flo Orange with Black	6 x 9 in	
6402-06-YLB (shown)	Yellow with Black	6 x 9 in	

GEOPRISM:
Surveying Prism

Long Range Target

FEATURES & BENEFITS

- This high-quality GPH1 Swiss-style prism assembly features a copper coated prism for consistent results and a removable target

- Metal prism holder
- Reversible target (long and short range, long range shown)
- Coating: Copper High Reflex coating and anti-reflex on front
- Offset: -34 mm, Nodal

- Diameter: 64.9 mm
- Centring accuracy: 1 mm
- Carrying case included
- Height: 86 mm
- Weighs 1.32 lb (0.60 kg)

GEOPRISM — Surveying Prism with Metal Housing

Prism Assembly:
Tilting Single

- Includes copper-coated 62 mm prism (6411-02)
- -30 mm offset aluminum prism holder, sealed with a rugged corrosion-proof electrostatic powder paint coating

- Target Size: 4.75" x 4.75"
- Weighs 1.50 lb (0.68 kg)

6440-00-FOR — Single Prism Tilting Assembly



Standard Prism Assembly

Contractor Series 62 mm prism assembly



FEATURES & BENEFITS

- Features a 62 mm copper-coated canister type prism
- Water-resistant and has a M20 universal mounting thread

- Tilting holder is powder-painted die cast aluminum
- Uses a simple but proven locking system

- Mounted in either 0 or -30 mm offset positions
- Tilting axis height is 115 mm
- Weighs 1.35 lb (0.62 kg)



Part No.
6402-10-FOB

6402-10-FOB — Construction Series Prism Assembly in Flo Orange with Black
6402-10-FLB — Construction Series Prism Assembly in Flo Yellow with Black
6402-10-YLB — Construction Series Prism Assembly in Yellow with Black



Prism Assembly: Tilting Triple

Complete system is perfect for longer distances



FEATURES & BENEFITS

- Made from orange polycarbonate with metal inserts and an aluminum yoke

- Holds one to three prisms, is compatible with most screw-in prisms
- Has a peep sight for pointing the holder, perfect for longer distances

- Includes three sealed copper-coated 62 mm prisms in black canisters (6411-02-BLK)
- 0 and -30 mm prism offset
- Weighs 2.70 lb (1.23 kg)



Part No.
6341-00

6341-00 — Tilting Triple Prism Assembly
6341-11 — Tilting Triple Prism Target



Prism: Sliding, Tilt Reflector

Use with Prism Pole or Site Rod



FEATURES & BENEFITS

- Attaches to the bottom of the graduated section of a pole so heights can be taken close to the ground

- Includes a, large, 2.5 inch (63.5 mm) silver-coated prism with protective rubber ring
- 0 offset and 40-min leveling vial
- Tilts in 15° increments, spring locked

- Large easy-to-use clamping knob
- Targets made of fluorescent-yellow translucent polycarbonate
- Use with prism pole or site rod
- Weighs 0.81 lb (0.37 kg)



Part No.
6455-00

6455-00 — Sliding Prism with Tilting Reflector



Prism Assembly: Nodal Point

Eclipse 62 mm can be offset to -40 mm



FEATURES & BENEFITS

- The Eclipse™ prism assembly features a water-resistant, nitrogen-charged, 62 mm prism canister and reversible target

- Can be set at a -40 mm, which offers optimal angle measurements, even when tilting in either the horizontal or the vertical axis

- Height to center of glass: 0.38 ft (115 mm)
- -30 mm adapter is included
- Weighs 1.15 lb (0.52 kg)



Part No.
6400-00

6400-00 — Eclipse 62 mm Nodal Point Prism Assembly
6410-00 — -30, -40 Offset Eclipse Prism Holder
6410-018 — 0 Offset Adapter for Eclipse Prism Assembly



**Prism Assembly:
Nodal Point**

62 mm can be offset to -40 mm



FEATURES & BENEFITS

- ▶ The import assembly features a polycarbonate holder, three prism offset positions, 0, -30 and -40 (nodal)

- ▶ The 62 mm prism is silver-coated and has a <5-second accuracy
- ▶ The height to center of glass: 0.33 ft (100 mm)

- ▶ The reversible non-tilting metal target comes in orange & white and black & white
- ▶ Weighs 1.45 lb (0.66 kg)



Part No.
6400-10

6400-10 — Nodal Point 62 mm Prism Assembly



**Prism Assembly:
Nodal Point**

62 mm can be offset to -40 mm



FEATURES & BENEFITS

- ▶ -34 mm offset prism
- ▶ Quick Release
- ▶ 86 mm Height
- ▶ Weighs 0.92 lb (0.42 kg)

6406-00 — Nodal Point 62 mm Prism Assembly



Prisms: Mini and Stakeout



- ▶ Here's a versatile prism system in a small package
- ▶ Assembly features a 25 mm copper-coated prism, for fog prevention, a tilting holder, with friction axis, 0 or -30 mm offset
- ▶ Can be mounted on a prism pole or tribrach at three heights: 70 mm, 100 mm, 115 mm, or can be hand-held using the plumb bob bracket or with S-hook for quick attachment to plumb bob
- ▶ Includes a 40-minute adjustable circular center or side mounted vial
- ▶ Also included a point for stake-out work, and a system bag with belt loop
- ▶ Powder painted flo orange
- ▶ Weighs 0.34 lb (0.15 kg)



6200-10-FOR — Mini Prism System with Center Vial
6200-11-FOR — Mini Prism System with Side Vial (shown)



- ▶ The 25 mm Stakeout Prism Assembly features 'site cones' that improve vertical angle pointing — the site cones double as tilting-axis lock knobs
- ▶ Adjustable 40-min vial is mounted on the front side and is easy to see and simple to adjust
- ▶ Includes carrying case
- ▶ Weighs 0.30 lb (0.14 kg)



PART NO.	OFFSET	COLOR
6405-10-FOR	0 / -30 offset	Flo Orange
6405-12-FOR	-17.5 offset (Nodal)	Flo Orange



**Prism System:
Tilting Mini**



FEATURES & BENEFITS

- ▶ The Eclipse™ mini system includes: a Mini Tilting Prism; plumb bob attachment; Mini Bob Prism Mount; Point, and Belt Case

- ▶ 0 and -30 offsets
- ▶ Black hardware

- ▶ Case included
- ▶ Weighs 0.30 lb (0.14 kg)

6450-00-BLK — Tilting Mini Prism System



Prisms: Mini and Stakeout



- ▶ The Mini Stakeout Prism with Site Cones features a 25 mm, copper-coated prism, aluminum double yoke construction with tilting coaxial target
- ▶ Two on-board 130-minute vials — top and bottom
- ▶ Includes replaceable plumb bob point
- ▶ 0 and -30 mm offset
- ▶ Includes carrying case
- ▶ Weighs 0.62 lb (0.28 kg)



6405-01-FOR — 25 mm Stakeout Prism Assembly - Flo Orange

6405-01-FLY — 25 mm Stakeout Prism Assembly - Flo Yellow

- ▶ The white site cones on X and Y axis of the assembly help improve centering of your instrument's crosshairs for vertical and horizontal pointing
- ▶ Used in four height configurations: 50 mm, 100 mm, 115 mm and 150 mm, top or bottom of the pole, handheld, or tribrach mounted
- ▶ Choose between 0/-30 mm or -17.5 mm (nodal) offsets
- ▶ Weighs 0.80 lb (0.36 kg), 1.30 lb (0.59 kg) with heavy-duty point

NODAL POINT



6405-11-FOR — Stakeout Mini Prism Kit - 0 / -30 mm offset - Flo Orange

6405-11-FLY — Stakeout Mini Prism Kit - 0 / -30 mm offset - Flo Yellow

6405-13-FOR — Stakeout Mini Prism Kit - Nodal -17.5 mm offset

- ▶ The Mini Prism Mono Pod Kit forms a stable base with your 6000-Series Mini Prism (sold separately, 6405-10-FOR)
- ▶ Kit is easy to set up and can be used by just one person
- ▶ Ideal for: construction surveys, inspections, as built, and many other applications
- ▶ Add a standard 5/8 x 11 extension to the kit to achieve heights to four feet
- ▶ Weighs 2.25 lb (1.02 kg)



5216-00 — Mini Prism Mono Pod Kit

Prisms: Sliding and Pin Pole Kits

Site cones double as locks



- ▶ Prism assembly slides up and down the pin pole
- ▶ Features a 25 mm, 0 offset silver-coated prism and a high quality aluminum holder
- ▶ Kit includes four 1-foot (30.5-cm) pole sections each with a 0.50-ft (15.24-cm) mark
- ▶ Site cones double as locks
- ▶ 40-minute adjustable vial on prism
- ▶ Prism includes an adapter so it can be used on any pole or tribrach adapter with 5/8 x 11 threads
- ▶ A system bag is also included
- ▶ Weighs 1.40 lb (0.63 kg)



5910-05 — Feet, 0 Offset (shown)

5910-06 — Metric, 0 offset



- ▶ This Reflector Pin Pole kit is ideal for use with reflectorless total station instruments
- ▶ The target holder is machined anodized aluminum and allows the target to tilt 360°
- ▶ 40-minute vial is built in
- ▶ Comes with four aluminum 30-cm pole sections, prism and system case
- ▶ 5 cm point is a special three-piece nonconductive design
- ▶ Weighs 1.45 lb (0.66 kg)



5910-10 — Reflector Pin Pole Kit

The sliding 360° Prism Kit allows for quick shots in confined line-of-sight situations and allows for more precise height measurements. Easily find the right shot at the right height!

The included adapter allows for easy connection to controllers, making it great for handheld use. Use one or all four pin pole sections for the height/portability you need.

- ▶ The prism assembly slides on 9-mm-diameter solid steel pin poles, graduated in cm
- ▶ The four solid yellow pole sections have cm grooves that the ball-detent in the prism assembly will automatically center on
- ▶ Replaceable stainless steel point
- ▶ The assembly is composed of seven 12.7-mm diameter silver-coated mini-prisms in a 360° configuration
- ▶ Prism offset is +2mm
- ▶ Adjustable circular vial is 40-minute
- ▶ Clamp screw locks the prism assembly anywhere on the pole
- ▶ Data collector adapter and carrying case are included
- ▶ Weighs 1.70 lbs (0.77 kg)



5910-24 — Sliding 360° Prism Kit

- ▶ The 12.2 mm OD pin pole features three sections - each 60 cm in length to achieve 5.91 ft (1.8 m); each color section (red or white) is 10 cm in length
- ▶ An adjustable 40-minute circular vial is built in to the prism holder
- ▶ 25 mm sliding prism system features a silver-coated prism with a 0 offset
- ▶ The holder easily slides up and down the pole, the knobs lock in height and tilt - they also double as vertical angle targets
- ▶ Other features include a replaceable stainless steel point on the pole, accessory kit with plumb bob hook and cone for attachment to the prism for handheld applications
- ▶ System Bag included
- ▶ Weighs 1.95 lb (0.90 kg)



6600-10 — Pin Pole with Sliding 25 mm Prism System

- ▶ This Euro-Style Pole System features a 40-minute adjustable vial, white sight cones and a 5/8 x 11 adapter for standard prism poles (for height of 115 mm)
- ▶ All 30 cm sections are anodized aluminum
- ▶ A carrying case is also included
- ▶ Weighs 1.60 lb (0.73 kg)



PART NO. OFFSET

5910-01-ARD 0 / -30 offset

5910-02-ARD -17.5 offset (Nodal)

Walleye Prism System

Lightweight and inexpensive, made to be set up and left for extended periods



FEATURES & BENEFITS

- ▶ The Walleye™ Prism System accommodates a full size 62 mm prism (6411-03-BLK) for long range applications or when a larger prism is needed
- ▶ Rain hood helps keep the prism clean to ensure continual measurements over a long measuring cycle

- ▶ The flat bottom of the L-Bracket is a large 2.3 x 3.4 inch (58.24 x 86.36 mm) with five holes for mounting to a variety of surfaces
- ▶ Components available individually so you can configure your specific needs
- ▶ The system is compatible with all M20 screw-in type prism canisters

- ▶ Center pivot hole is 3/8 inch (9.5 mm), the four screw holes are 4.5 mm OD
- ▶ Features include a -40 mm offset, ± 2 mm, ability to pivot in two axes, stainless-steel locking
- ▶ System weighs 1.55 lb (0.70 kg)



Part No.
6603-00

PART NO.	DESCRIPTION	
6603-00	Complete Walleye Prism System with Prism and 5/8 x 11 Adapter	
6603-01	Complete Walleye Prism System with Prism and M8 Adapter	
6603-00-050	L-Bracket Assembly Only	
6603-00-005-TMB	Rain Hood Only	
6603-00-051	5/8 x 11 Adapter with Screws and Washer	
6603-01-051	M8 Adapter with Screws and Washer	

Mini Prisms

Lightweight and inexpensive, made to be set up and left for extended periods



- ▶ Features a 60 mm diamond pattern sheeting and a 2 mm offset
- ▶ Use for distances up to 492 ft (150 m)
- ▶ Feature an 86 mm height
- ▶ Fits Swiss-style male tips or Quick Release adapters
- ▶ Weighs 0.17 lb (0.08 kg)



6600-01 — Small Tilting Mini Prism - Diamond Pattern

- ▶ Features a 60 mm diamond pattern with Crosshairs sheeting and a 2 mm offset
- ▶ Use for distances up to 492 ft (150 m)
- ▶ Features an 86 mm height
- ▶ Fits Swiss-style male tips or Quick Release adapters
- ▶ Weighs 0.15 lb (0.07 kg)



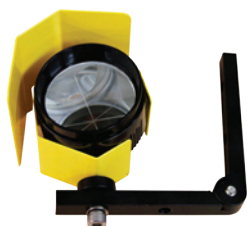
6600-03 — Diamond Pattern with Crosshairs

- ▶ Use for distances up to 492 ft (150 m)
- ▶ Features a 25 mm mini prism for longer distances up to 2,000 ft (609.6 m)
- ▶ Features an 86 mm height
- ▶ Fits Swiss-style male tips or Quick Release adapters
- ▶ Offset 17.5 mm
- ▶ Weighs 0.23 lb (0.10 kg)



6600-04 — Small Tilting 25 mm Mini Prism

- ▶ This Mini Prism series is ideal for deformation and mining surveys or wherever permanent mounting is needed
- ▶ This design makes mounting and pointing easy on uneven surfaces
- ▶ Mounting Arm allows tilt up to 240 degrees and Prism mount allows 360 degrees rotation
- ▶ Rechargeable battery
- ▶ The two Mounting holes are spaced 1.75" (44.4mm) apart
- ▶ Mounting holes are 0.328" (8.3mm) diameter
- ▶ Two Prism mounting holes, spaced 1.75" (44.4mm) apart
- ▶ Pivot and Prism mounting bolts are 8MM stainless steel with lock washers
- ▶ 6mm Hex wrench included
- ▶ Rain Hood included with 6603-05

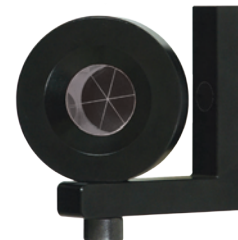


- ▶ The 25 mm copper-coated prism is permanently bonded to the holder making it water and dust proof
- ▶ Features a black anodized aluminum holder
- ▶ Tilting screw uses an 8 mm hex wrench to loosen and tighten it
- ▶ Mounting hole is 10.3 mm (0.406 inch) in diameter
- ▶ Design makes mounting and pointing simple
- ▶ -25 mm offset
- ▶ Weighs 0.45 lb (0.20 kg)



6600-02 — 25 mm 'L-Bar' Copper-Coated Mini Prism

- ▶ The 25 mm silver-coated prism is permanently bonded to the holder making it water and dust proof
- ▶ Features a black anodized aluminum holder
- ▶ Tilting screw uses an 8 mm hex wrench to loosen and tighten it
- ▶ Mounting hole is 10.3 mm (0.406 inch) in diameter
- ▶ Design makes mounting and pointing simple
- ▶ -25 mm offset
- ▶ Weighs 0.45 lb (0.20 kg)



6600-05 — 25 mm 'L-Bar' Silver-Coated Mini Prism

PART NO.	PRISM SIZE	COATED	WEIGHT	
6603-05	62 mm	Silver	1.15 lbs (0.52 kg)	
6603-06	25 mm	Copper	0.50 lbs (0.23 kg)	

Prism: Dual Adjustable

Allows accurate measurements from two or more directions or stations



FEATURES & BENEFITS

- For mining, tunneling, monitoring and rail
- Minimal horizontal angle is 84° (Hex tool included)
- Compatible with standard surveying 5/8 x 11 accessories

- Holders can be stacked for more than two prisms or an GNSS Receiver can be connected on the top 5/8 x 11 stud so an GNSS measurement can also be made
- Includes two 62 mm silver coated, water-resistant prisms,

- accuracy < 2 arc seconds
- Prism holder is machined from 303 stainless-steel
- Zero (0) prism offset, ±1 mm
- Weighs 2.60 lb (1.18 kg)



Part No.
6603-03

6603-03 — Adjustable Dual Prism



Prism Assembly Components

Customize your own prism solution



- 62 mm Nitrogen filled prism with hermetically sealed canister
- Features <5-second accuracy



6411-00



- 62 mm copper-coated prism with sealed canister
- Features <5-second accuracy



6411-02-BLK



- 62 mm silver-coated prism with heavy-duty sealed canister
- Features <5-second accuracy



6411-03-BLK



- 62 mm silver-coated prism with heavy-duty sealed-canister
- Features <2-second accuracy



6411-04-BLK



- 62 mm silver-coated strobe prism
- Features 0.5-second flash
- Sanyo CR 1/3N Battery



6416-00



- 25 mm copper-coated prism in a canister
- Weighs 0.06 lb (0.03 kg)



6020-01



- 25 mm silver-coated prism in a canister
- Weighs 0.06 lb (0.03 kg)



6020-02



Monitoring Accessories

Aluminum plates for anchoring



- Wedge-shaped aluminum plate features a 12.5 mm prism
- Plate can be fixed with special adhesive on to the pavement
- Dimensions: 10 x 10 x 2 cm (3.94 x 3.94 x 0.79 inches)
- Weighs 0.62 lb (0.28 kg)



4 520 800 — 12.5 mm Street-Mountable Building Monitoring Prism System



- Anodized aluminum plate
- Three key holes for screws to mount the plate
- With 5/8 x 11 threaded stud for Tribrach adapter centered on the plate
- Weighs 1.81 lb (0.82 kg)



1 510 011 — Screw Mounting Column Plate



- Anodized aluminum plate
- The three bottom anchor bolts are embedded in concrete during installation
- With 5/8 x 11 threaded stud for Tribrach adapter centered on the plate
- Weighs 2.29 lb (1.04 kg)



1 510 001 — Column Plate



Quick Release Adapters and Rebar Bolts

Lightweight and inexpensive, made to be set up and left for extended periods



- 6601-Series Quick Release Adapters are made of T-303 stainless steel with machined threads that attach to corresponding Anchor Bolts or the 6602-Series rebar bolts
- Weighs 0.10 lb (0.05 kg)



6601-01 — 1/4 x 20 Threads
6601-02 — 3/8 x 16 Threads
6601-03 — M8 Threads
6601-04 — M12 Threads



- Measures 3/4 x 9.9 inches (19.05 x 251.46 mm) long
- Includes a hex bolt used to hammer the bolt in to the surface
- Once installed, remove the hex bolt and install the 6601-Series adapter of your choice
- Choose between 3/8 x 16, M8 or M12 thread patterns
- Weighs 1.25 lb (0.57 kg)



6602-01 — Rebar Bolt 3/8 x 16 Threads
6602-02 — Rebar Bolt M12 Threads
6602-03 — Rebar Bolt M8 Threads



GeoDesy
by seco

GeoDesy: premier technology



Tribrach Adapter

- ▶ Height: 136.2 mm
- ▶ Weighs 0.88 lb (0.40 kg)

FPT144-BLK — Traverse
Tribrach Adapter & GPS Carrier
w/ Swiss-Style Locking Pin

Fixed Tribrach Adapter

- ▶ Height: 145.5 mm
- ▶ Weighs 1.10 lb (0.50 kg)

FPT146-BLK — Fixed Tribrach
Adapter with 5/8 x 11 Stud

Tribrach Adapter

- ▶ Height: 40 mm
- ▶ Weighs 0.62 lb (0.28 kg)

FPT247-BLK — Fixed Tribrach Adapter
& GPS Carrier with 5/8 Stud

Tribrach Adapter

- ▶ Includes rotating lock screw
- ▶ Height: 32 mm
- ▶ Weighs 1.10 lb (0.50 kg)

A455 — Tribrach Adapter
with Rotating Lock Screw

Tribrach Adapter

- ▶ Non-Rotatable
- ▶ Height: 22.5 mm
- ▶ Weighs 0.66 lb (0.30 kg)

A452 — Non-Rotatable
5/8 x 11 Tribrach Adapter

Tribrach Adapter

- ▶ Height: 23 mm (slim)
- ▶ Rotating, Friction
- ▶ Weighs 0.79 lb (0.36 kg)

A458 — Rotatable Tribrach
Adapter

Tribrach Adapter

- ▶ Height: 32 mm
- ▶ Rotating, Friction
- ▶ Weighs 1.06 lb (0.48 kg)



A456 — Tribrach Adapter

Rotatable Prism Holder With
Optical Plummet

- ▶ Shortest focal distance: 0.35 mm
- ▶ Operating Temperature: -20°C to +50°C
- ▶ Magnification: 2x
- ▶ Image: Erect
- ▶ Height: 136.2 mm
- ▶ Accuracy: 0.5 mm/1.5 m
- ▶ Vial Sensitivity: 45"/2 mm
- ▶ Swiss-Style quick lock pin
- ▶ Weighs 1.41 lb (0.64 kg)

RT481WON-BLK — Rotatable Prism
Holder with Optical Plummet and
Swiss-Style Locking PinRotatable Prism Holder With
Optical Plummet

- ▶ Shortest focal distance: 0.35 mm
- ▶ Operating Temperature: -20°C to +50°C
- ▶ Magnification: 2x
- ▶ Image: Erect
- ▶ Accuracy: 0.5 mm/1.5 m
- ▶ Height: 100 mm
- ▶ Vial Sensitivity: 45"/2 mm
- ▶ Bayonet style tip
- ▶ Weighs 1.41 lb (0.64 kg)

RT482WON-BLK — Rotatable
Prism Holder with Optical
Plummet and Bayonet TipRotatable Prism Holder With
Optical Plummet

- ▶ Shortest focal distance: 0.35 mm
- ▶ Operating Temperature: -20°C to +50°C
- ▶ Vial Sensitivity: 45"/2 mm
- ▶ Magnification: 2x
- ▶ Image: Erect
- ▶ Height: 70 mm
- ▶ Accuracy: 0.5 mm/1.5 m
- ▶ 5/8 x 11 threaded stud
- ▶ Weighs 1.23 lb (0.56 kg)

RT484WON-BLK — Rotatable Prism
Holder with Optical Plummet and
5/8 x 11 Threaded StudRotatable Prism Holder
Without Optical Plummet

- ▶ Swiss-Style quick lock pin
- ▶ Height: 136.2 mm
- ▶ Vial: 45"/2 mm
- ▶ Weighs 1.21 lb (0.55 kg)

RT481W-BLK — Rotatable Prism Holder
without Optical Plummet with Swiss-
Style Locking PinRotatable Prism Holder
Without Optical Plummet

- ▶ Bayonet tip
- ▶ Height: 100 mm
- ▶ Vial: 45"/2 mm
- ▶ Weighs 1.21 lb (0.55 kg)

RT482W-BLK — Rotatable Prism Holder
without Optical Plummet with Bayonet TipRotatable Prism Holder
Without Optical Plummet

- ▶ 5/8 x 11 threaded stud
- ▶ Height: 70 mm
- ▶ Weighs 1.06 lb (0.48 kg)

RT484W-BLK — Rotatable Prism Holder without
Optical Plummet with 5/8 x 11 Threaded Stud

GeoDesy
by seco

NEW Tribrach Technology: High Precision Laser Tribrach



This tribrach is green in more ways than one – it includes a rechargeable, replaceable battery. Most laser tribrachs' batteries have to be replaced in less than an hour, but this one can be used continuously for 6-7 hours.

This new High Precision tribrach is available with either a red or green laser. The green laser is easily visible in extremely dark conditions and also in extremely bright, sunny conditions, making it ideal for surveyors doing work from tunnels to bridges.

SECO offers Geodesy by SECO tribrachs in two different models; High-Precision and Standard-Precision.



Part No.
2152-06-BLK



FEATURES & BENEFITS

- ▶ Rechargeable battery pack
- ▶ Replaceable battery pack (sold separately)
- ▶ Up to 7 hours of continuous operation without battery charge or replacement
- ▶ Battery level indication
- ▶ Green and Red laser version
- ▶ High contrast laser dot
- ▶ Laser dot size: 1,5mm over 1,5 meters or equivalent in imperial
- ▶ Micro USB charging, cable included
- ▶ 3cc (1 arc sec) Geodesy by Seco MOM Tribrach
- ▶ 8' vial
- ▶ Operating temperature -10C - +50C (14F - 122F)
- ▶ Laser class: Class 1M laser
- ▶ Battery: 500mAh Li-Po battery
- ▶ Charge temp: 0°C - 45°C
- ▶ Operating temperature -10C - +50C (14F - 122F)
- ▶ Operating height: 0,3m-5m operation
- ▶ Vial: 8' circular
- ▶ Connection: 5/8 x 11
- ▶ IP 65

2154-04-BLK — High-Precision Green Laser Tribrach

2154-02-BLK — High Precision Red Laser Tribrach

2154-03-BLK — Standard Green Laser Tribrach

2154-01-BLK — Standard Red Laser Tribrach

2154-BATT — Replaceable Battery Pack



GeoDesy
by seco

Quality European-made tribrachs allows your equipment to stay steady



FEATURES & BENEFITS

- ▶ SECO now offers Geodesy-MOM tribrachs in two different models; our High-Precision tribrach and now the Standard-Precision tribrach
- ▶ European-made with an effortless locking mechanism for fast and solid accessory connection
- ▶ A center line on each of the leveling screws allows the user to balance the lengths of the leveling screws
- ▶ All tribrachs feature 5/8 x 11 threaded base plates and 8-minute circular vials
- ▶ High-precision tribrachs feature an error in angle measurement (hysteresis) is under 3 cc (60
- ▶ Ncm torsion moment and 12 kg vertical load), standard tribrach is 5 cc
- ▶ The 2152-06-BLK has a shortest focus distance of 0.35 m and an accuracy of 0.5 mm / 1.5 m
- ▶ Features 2X magnification and an erect image
- ▶ Operating temperature is -20°C to +50°C (-4°F to +122°F)



Part No.
2152-06-BLK

2152-06-BLK — High-Precision Tribrach with Optical Plummet

2153-06-BLK — High-Precision Non-Optical Plummet Tribrach

2152-07-BLK — Standard Precision Tribrach with Optical Plummet

2153-07-BLK — Standard Precision Non-Optical Plummet Tribrach



Tribrachs & Adapters

Contractor-series tribrachs and adapters



- ▶ Bright 650-nm focused laser dot
- ▶ Circular vial w/ 8-minute sensitivity
- ▶ Standard three-prong forced centering with center lines
- ▶ Included is a standard 3 volt CR2 lithium battery
- ▶ Weighs 1.65 lb (0.75 kg)
- ▶ Laser class 2
- ▶ These tribrachs do not fit Trimble "S6" Series Instruments



2153-02-BLK — Laser Tribrach



- ▶ The Optical Plummet Twist Focus Tribrach features twist focus (2.5X mag) and leveling screws with center line
- ▶ Features an 8-min vial, three-prong forced centering and a 5/8 x 11 base
- ▶ Tribrach has a focusing range of 1.5 to 50 ft (0.5 to 15 m)
- ▶ These tribrachs do not fit Trimble "S" Series Instruments
- ▶ Weighs 1.85 lb (0.84 kg)



2152-04-BLK — Tribrach with Optical Plummet
2153-04-BLK — Tribrach w/o Optical Plummet



- ▶ Allows adjusting of prism height by moving the threaded brass insert in the adapter
- ▶ Fits all tribrachs
- ▶ Weighs 1.91 lb (0.87 kg)
- ▶ 50-75 mm



2071-00 — Prism H.T. Adapter



- ▶ This adapts retro prisms to Swiss style tribrachs and has a removable Zeiss plug and locking screw
- ▶ Fits all tribrachs
- ▶ Weighs 1.75 lb (0.80 kg)
- ▶ Height 34.5 mm



2070-00 — Rotating Tribrach Adapter



- ▶ This rotating friction top tribrach adapter allows the prism to be pointed after installation in the tribrach
- ▶ Fits all tribrachs
- ▶ Weighs 0.90 lb (0.41 kg)
- ▶ Height 32 mm



2020-00 — Rotating Tribrach Adjuster



- ▶ Use adapter for mounting retro prisms and tripod mounted target systems
- ▶ Fits all tribrachs
- ▶ Weighs 0.50 lb (0.23 kg)
- ▶ Height 24.5 mm



2010-00 — Fixed Tribrach Adapter



- ▶ Will accept any 5/8 x 11 instrument
- ▶ Features a precision brass slow-motion tangent screw
- ▶ Fits all tribrachs
- ▶ Weighs 3.00 lb (1.36 kg)
- ▶ Height 48.5 mm



2021-00 — Horizontal Base



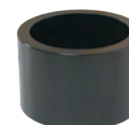
- ▶ Use for adjusting optical plummet tribrachs and tribrach bubbles
- ▶ Machined black anodized aluminum features a 2-minute bubble
- ▶ Weighs 1.30 lb (0.59 kg)



2002-00 — Tribrach Adjuster



- ▶ Check and adjusting optical plummet tribrachs in the office
- ▶ Precision-machined, black anodized aluminum
- ▶ Weighs 0.70 lb (0.32 kg)



2001-00 — Tribrach Adjusting Cylinder



European Style Tribrach

Choose with or without Optical Plummet



FEATURES & BENEFITS

- ▶ This tribrach features 2X magnification and a twist focus
- ▶ Its reticle is composed of two small concentric circles

- ▶ With a sighting distance of 0.3 m to 15 m, the tribrach has an accuracy of 0.5 mm per 1.5 m
- ▶ Locking forced-centering knob and a 5/8 x 11 base and an 8-minute circular vial

- ▶ Choose with or without an optical plummet
- ▶ Weighs 1.55 lb (0.70 kg)

2152-05-BLK — European-Style Tribrach with Optical Plummet
2153-05-BLK — European-Style Tribrach Non-Optical Plummet Tribrach



Part No.
2152-05-BLK

Traverse Tribrach Adapter

Compatible with all 24.9 mm bayonet base prisms



2153-10-051 Quick Release Adapter



2153-10-050 Male 5/8 x 11 Adapter

FEATURES & BENEFITS

- ▶ The optical plummet is twist-focus with 2.5X magnification
- ▶ 60-second adjustable plate vial

- ▶ Precision-machined axis rotates 360°
- ▶ Compatible with all prisms with a 24.9 mm bayonet base

- ▶ The adjustable height is 100 to 120 mm — fits all standard three-prong tribrachs
- ▶ Over point accuracy is 0.5 mm at 1.5 m
- ▶ Weighs 1.70 lb (0.77 kg)

2153-10-BLK — Traverse Tribrach Adapter



Part No.
2153-10-BLK

Single Prism Traverse Kit

Target, glass and plummet all in one hard-shell case



FEATURES & BENEFITS

- Includes a 62 mm prism with silver-coated canister (6400-10)
- The adjustable (and reversible) tilt target has a sighting collimator for precise pointing and has 0, -30, and -40 offsets
- The kit comes with a rotating tribrach adapter (2153-10) that is

- compatible with all prisms with a 24.9 mm bayonet base
- Features a 2.5X twist focus optical plummet and a 60-second adjustable plate vial
- Prism has <5 arc seconds angle deviation
- The adapter has a precision machined axis that rotates 360°
- The height is 180 to 200 mm and

- over the point accuracy is 0.5 mm at 1.5 m
- Also included is a tribrach (2153-04) which features three screw-leveling with center line, an 8-minute circular vial, and 5/8 x 11 base thread
- Includes hard shell case
- Weighs 9.95 lb (4.51 kg)

Part No.
2159-01-BLK

2159-01-BLK — Single Prism Traverse Kit
 2159-050 — Hard Shell Traverse Carrying Case (included in kit or sold separately)



Precision Traverse Kits for 196 mm Heights

Perfect companion for Trimble or Spectra Precision Total Stations



2159-06 Precise Traverse Kit

2159-07 Precise Traverse Kit

FEATURES & BENEFITS

- These new Traverse Kits are a high quality, high precision European made product.
- Prism holder is all metal with a standard Swiss type push button quick release that will also work with all Swiss type poles.

- Target is reversible for short or long range applications
- Rotating Adapter has a 2X magnification optical plummet with a plumbing accuracy of 0.5mm/1.5M with a 45° sensitivity adjustable plate vial.
- Tribrach is a high precision model with torsional rigidity <1".

- Circular vial is 8 minutes per 2 mm of movement.
- Height of the assembly is 196mm, +/-0.5mm from tribrach dish to prism center.
- Carrying case is a bright orange hard shell with high density foam inserts and backpack straps.
- Weight 9.95 Lbs

Part No.
2159-06

PART NO.	PRISM SIZE	COATED	OFFSET	
2159-06	62 mm	Copper	-34	
2159-07	62 mm	Silver	-35	

Traverse Kit for 196 mm Heights

For Trimble or Spectra Precision S6 series total stations



FEATURES & BENEFITS

- Preset to a 196 mm height
- Adjustable for taller instruments ranging from 196 mm to 216 mm heights
- Works with all Trimble® S6 and the Spectra Precision Focus 30 instruments
- Traverse or precise back sight kit includes a 62 mm prism assembly (6402-22-YLB)

- Prism has <5 arc seconds angle deviation and a silver-coated canister to resist fogging
- Kit comes with a rotating tribrach adapter (2153-10) with a 2.5X twist focus optical plummet and a 60-second adjustable plate vial
- Tilt target has 0 or -30 offsets
- Adapter has precision machined axis that rotates 360°
- Over the point accuracy is 0.5 mm at 1.5 m

- Also included is European-made tribrach (2153-06) which features three-screw-leveling with center line, an 8-minute circular vial, and 5/8 x 11 base thread
- Kit comes with a bright orange, hard shell carrying case (2159-050) with high density foam inserts, nickel plated latches and backpack straps
- Weighs 9.95 lb (4.51 kg)

Part No.
2159-03-BLK

2159-03-BLK — Traverse Kit for 196 mm Heights



Traverse Kit for 155 mm Heights

For Nikon Nivo™ Total Stations



FEATURES & BENEFITS

- Preset to a 155 mm height making it compatible with Nikon NIVO™ Series Total Stations
- Kit includes a 62 mm prism assembly
- Prism has <5 arc seconds angle deviation and a silver-coated prism to resist fogging

- Includes rotating tribrach adapter with a 2.5X pull focus optical plummet and a 45-second adjustable plate vial
- Adapter has a precision machined axis that rotates 360°
- Tilt target has 0 or -30 offsets
- Over the point accuracy is 0.5 mm at 1.5 meters
- Also included is a (2153-04)

- tribrach which features three-screw-leveling with center line, an 8-minute circular vial, and 5/8 x 11 base thread
- Kit comes in a bright orange, hard shell carrying case (2159-050) which features high density foam inserts, nickel plated latches and backpack straps
- Weighs 9.95 lb (4.51 kg)

Part No.
2159-04-BLK

2159-04-BLK — Traverse Kit for 155 mm Heights



Tripod Dolly

Moves a tripod quickly to the next shot without breaking down the instrument



FEATURES & BENEFITS

- ▶ Tripod Dolly for all surveying tripods
- ▶ Easily maneuvered through doorways
- ▶ Folds for portability, 25.5" folded
- ▶ Convenient carrying handle

- ▶ Locking 5" diameter, hard rubber wheels; ball bearing casters with cable guards
- ▶ Adjustable Velcro straps to keep tripod secure
- ▶ Load capacity 132 lbs
- ▶ Weight 17 lbs

Note: Tripod not included with dolly.

5610-15 — Tripod Dolly



Tri-Max Tripods

Features positive locking systems



FEATURES & BENEFITS

- ▶ The Tri-Max® is the only surveying-grade fiberglass tripod with certified accuracy – highly recommended for all servo-driven and robotic total stations, 3-D laser scanners or construction lasers
- ▶ The revolutionary design of this tripod series means this tripod will meet ISO standard (12858-2-H) right out of the box, and after years of field use
- ▶ The shape and size of the foot are designed to allow for a solid placement on any terrain

- ▶ Features a round head with large center hole to facilitate an easy set-up over a point
- ▶ The large 'footbed' is there to facilitate solid planting for stability
- ▶ A retaining system—which prevents leg kick out and accidental falls on slick surfaces—is stored on the inside of the leg and can be left in place when the tripod is not in use
- ▶ The foot is equipped with a replaceable point and a retention loop for use with a safety strap
- ▶ Tri-Max tripods can handle equipment up to 30 kg (65 lb)
- ▶ Collapsed: 113 cm (44.5 in) except 90560: 54 in (1.37 m)

APPLICATIONS

- ▶ Robotics
- ▶ Scanning
- ▶ Leveling



Part No.
90550

PART NO.	LOCK TYPE	LEGS	WEIGHS	EXTENSION	HEAD	HARDWARE	
90550	Quick Clamp	Fiberglass	17.00 lb (7.70 kg)	71 in (1.8 m)	Flat	Black	
90551	Screw Clamp	Fiberglass	17.00 lb (7.70 kg)	71 in (1.8 m)	Flat	Black	
90553	Dual Clamp	Fiberglass	17.00 lb (7.70 kg)	71 in (1.8 m)	Flat	Black	
90560	Dual Clamp	Fiberglass	20.00 lb (9.00 kg)	91 in (2.3 m)	Flat	Black	

Premier Fiberglass Tripods

Improved quality and stability for more accurate measurements



FEATURES & BENEFITS

- ▶ 6-5/8 inch (16.83 cm) flat head with large center hole (2-5/8 inch, 6.67 cm) to facilitate an easy set-up over a point
- ▶ Foot is equipped with a replaceable point made of hardened steel
- ▶ Standard 5/8 x 11 threaded brass instrument stud

- ▶ Snap cap to protect tripod head
- ▶ Extends to 70.75 inches (179 cm)
- ▶ Collapses to 43.75 inches (111 cm)
- ▶ Made in North America under strict quality controls
- ▶ Includes a comfortable shoulder strap for carrying over longer distances

APPLICATIONS

- ▶ Ideal for mounting theodolites, lasers, auto levels, or total stations



Part No.
90582

PART NO.	LOCKING	LEGS	EXTENDS	COLLAPSES	WEIGHS	COLOR	
90582	Dual Lock	Fiberglass	70.75 in (179 cm)	43.75 in (111 cm)	13.60 lb (6.16 kg)	Orange (shown)	

Universal Tri-Max Elevator Tripod

A gear box controls the lift and descent so the center column cannot free fall



90557-050

FEATURES & BENEFITS

- ▶ SECO's Universal Tri-Max® Elevator Tripod features a working height range of 4.10 ft (1.20 m) collapsed to 8.60 ft (2.62 m) extended with the center column at full height
- ▶ Center column independently lifts 1 meter (90558-050)
- ▶ A gear box controls lift and descent so the center column cannot free fall
- ▶ The 5/8 x 11 mounting head is removable and adjustable in azimuth direction

- ▶ Additional 1 meter section may be added for a total recommended height of 10 ft (3 m) for instruments under 15 lb (6.80 kg)
- ▶ Sections can move up or down
- ▶ Machined-aluminum elevator column and fiberglass legs makes for a robust and easy-to-use laser instrument tripod
- ▶ Fiberglass Legs
- ▶ Stable for instruments up to 25 lb (11.33 kg) under most conditions
- ▶ Weighs 29.00 lb (13.20 kg)
- ▶ Collapsed length 53 in

APPLICATIONS

- ▶ Robotics
- ▶ Scanning
- ▶ Leveling



Part No.
90558

90558 — Universal Tri-Max Elevator Tripod
90558-050 — 1 Meter Extension for Universal Tri-Max Elevator Tripod
90557-050 — Tri-Max Wheel Kit
90558-052 — Adaptor Plate, 3/8-16



Short Tri-Max

Standard Tri-Max quality in a smaller size



FEATURES & BENEFITS

- ▶ The Tri-Max® Short Quick Clamp Tripod features the exact same design and construction as the full-size (90550) Tri-Max but it is more portable

- ▶ Extends to 5.67 ft (1.73 m)
- ▶ Collapses to 3.44 ft (1.05 m)
- ▶ Highly recommended for all servo-driven and robotic total stations and 3-D laser scanners
- ▶ Fiberglass legs
- ▶ Weighs 15.40 lb (7.00 kg)

APPLICATIONS

- ▶ Robotics
- ▶ Scanning
- ▶ Leveling



Part No.
90550-S

90550-S — Short Tri-Max 

Extra-Tall Fiberglass Elevator Tripod

Locking leg stabilizers provide greater stability



FEATURES & BENEFITS

- ▶ Tripod has a fully-extended leg and center column height of 12.40 ft (3.80 m) and a collapsed height of 5.97 ft (1.82 m)
- ▶ Features an adjustable center column that gives you 3.7 ft (1.12 m) of lift
- ▶ Lockable leg stabilizer struts, dual clamps, screw clamp and quick clamp, along with dual metal and rubber leg points and handy leg strap create greater stability

- ▶ Detachable round head plate, with a 5/8 x 11 stud, gives your instrument a sturdy platform
- ▶ Column can hold 66 lb (30 kg) when collapsed, and 15.4 lb (7 kg) when elevating
- ▶ Legs and dowels are constructed of fiberglass for durability, strength and resistance to weathering
- ▶ Includes leg straps
- ▶ Weighs 33.10 lb (15.00 kg)

APPLICATIONS

- ▶ Use with lasers, scanners, machine control or other instruments



Part No.
5321-17-ORG

5321-17-ORG — Extra-Tall Fiberglass Elevator Tripod 

Aluminum Elevator Tripods

Locking leg stabilizers provide greater stability



FEATURES & BENEFITS

- ▶ Aluminum elevator tripods have smooth operating adjustable center columns
- ▶ Black hardware

- ▶ Tough kick-in cleats and points
- ▶ Features a built-in circular vial in the instrument head and safety chains on the legs to prevent slipping on hard surfaces

APPLICATIONS

- ▶ Ideal for lasers, scanners, machine control or other instruments



Part No.
5321-16-BLK

PART NO.	LOCK TYPE	HEAD	EXTENDS	COLLAPSES	WEIGHS	
5321-16-BLK	Quick Clamp	Elevator / Round	7.60 ft (2.3 m)	4.26 ft (1.26 m)	16.30 lb (7.39 kg)	

Aluminum Elevator Tripods

Locking leg stabilizers provide greater stability



FEATURES & BENEFITS

- ▶ Aluminum elevator tripods have smooth operating adjustable center columns
- ▶ Black hardware

- ▶ Tough kick-in cleats and points
- ▶ Lighter weight Elevator Tripod version that features a flat 36 mm head and an elevator column that extends 15.75 in (84 cm)

APPLICATIONS

- ▶ Ideal for lasers, scanners, machine control or other instruments

PART NO.	LOCK TYPE	HEAD	EXTENDS	COLLAPSES	WEIGHS	
5321-18-BLK	Quick Clamp	Elevator / Flat 36 mm	67 in (170 cm)	34 in (86 cm)	7.35 lb (3.30 kg)	

Birch Wood / Fiberglass Hybrid Tripod

Improved kiln dried birch wood / fiberglass hybrid tripod models



FEATURES & BENEFITS

- ▶ Combination of hardwood legs with fiberglass dowels provides stability and weather resistance
- ▶ Large aluminum head and leg hinges provide stable mounting base

- ▶ Double banded extension legs and large positive locking quick clamp for extra stability
- ▶ Powder coated wear-resistant metal hardware
- ▶ Aluminum shoe with hardened steel replaceable shoe points

- ▶ Includes: plastic head cap for protection, heavy-duty poly-webbing shoulder strap for ease of carrying to the job site (not shown)

PART NO.	MATERIAL	EXTENDED	COLLAPSES	CLAMPING	HEAD	WEIGHT	COLOR	
5302-13-BLK	Wood / Fiberglass	69" (175.26 cm)	43" (109 cm)	Quick Clamp	Triangle	16.5 lb (7.48 kg)	Black	
5302-13-ORG	Wood / Fiberglass	69" (175.26 cm)	43" (109 cm)	Quick Clamp	Triangle	16.5 lb (7.48 kg)	Orange	
5402-13-BLK	Wood / Fiberglass	72" (183 cm)	43" (109 cm)	Twist Locks	Triangle	15.7 lb (7.14 kg)	Black	
5402-13-ORG	Wood / Fiberglass	72" (183 cm)	43" (109 cm)	Twist Locks	Triangle	15.7 lb (7.14 kg)	Orange	

Disclaimer: the full-view tripod is a composite photograph for illustrative purposes

Heavy-Duty Birch Wood Tripods

Improved kiln dried birch wood tripod models



Disclaimer: the full-view tripod is a composite photograph for illustrative purposes

FEATURES & BENEFITS

- Made of high quality birch hardwood with wide-frame extension legs and 123mm (0.91") dowels
- Large 6.5" (165mm) aluminum head

- Twist locks with die cast leg bands for maximum locking
- Quick clamps, adjustable, for quick set ups
- Powder Coated metal fittings
- Aluminum shoe with hardened steel replaceable shoe points

- Instrument Fastener brass 5/8-11
- Includes heavy-duty poly-webbing shoulder strap for ease of carrying to the job site (not shown)

PART NO.	MATERIAL	EXTENDED	COLLAPSES	CLAMPING	HEAD	WEIGHT	COLOR	
5220-13-BLK	Wood	68" (173 cm)	43" (109 cm)	Dual Locks	Round	16.5 lb (7.48 kg)	Black	
5220-13-ORG	Wood	68" (173 cm)	43" (109 cm)	Dual Locks	Round	16.5 lb (7.48 kg)	Orange	
5420-13-BLK	Wood	72" (183 cm)	43" (109 cm)	Twist Locks	Round	15.0 lb (6.82 kg)	Black	
5420-13-ORG	Wood	72" (183 cm)	43" (109 cm)	Twist Locks	Round	15.0 lb (6.82 kg)	Orange	

Square Leg Aluminum Tripods

Heavy-duty aluminum square leg tripods offer stability and accuracy



FEATURES & BENEFITS

- Equipped with square outer dowels for a more secure lock
- These tripods are equipped with a 5/8 x 11 threaded adapter

- for convenient mounting of instruments
- They're built to last—with heavy construction throughout—and are designed to withstand rigorous field conditions

APPLICATIONS

- Ideal for mounting theodolites, lasers, auto levels, or total stations



Part No.
5301-31-BLK

PART NO.	LOCK TYPE	LEGS	WEIGHS	EXTENSION	HEAD	HARDWARE	
5301-31-BLK	Quick Clamp	Aluminum (Square)	9.70 lb (4.40 kg)	64 in (1.60 m)	Triangle / Flat	Black	
5301-31-ORG	Quick Clamp	Aluminum (Square)	9.70 lb (4.40 kg)	64 in (1.60 m)	Triangle / Flat	Orange	

Round Leg Aluminum Tripods

Sturdy and lightweight tripods for many applications



FEATURES & BENEFITS

- These tripods accommodate 5/8 x 11 instruments and are designed for all types of jobs
- Choices include: Flat or dome

- head, standard, elevator or mini tripod size
- The telescopic legs allow for setup at various heights and are available with orange or black hardware (on some models)

APPLICATIONS

- Ideal for mounting theodolites, lasers, auto levels, or total stations



Part No.
5301-21-ORG

PART NO.	LOCK TYPE	LEGS	WEIGHS	EXTENSION	HEAD	HARDWARE	
5301-21-ORG	Quick Clamp	Aluminum (Round)	9.35 lb (4.24 kg)	65 in (1.65 m)	Triangle / Flat	Orange	
5301-21-BLK	Quick Clamp	Aluminum (Round)	9.35 lb (4.24 kg)	65 in (1.65 m)	Triangle / Flat	Black	
5301-25-BLK	Quick Clamp	Aluminum (Round)	7.45 lb (3.38 kg)	63.5 in (1.60 m)	Triangle / Flat	Black	
5301-24-BLK	Quick Clamp	Aluminum (Round)	6.75 lb (3.06 kg)	27 in (68.65 cm)	Triangle / Flat	Black	
5311-21-ORG	Quick Clamp	Aluminum (Round)	7.60 lb (3.45 kg)	63.5 in (1.60 m)	Dome	Orange	
5401-21-BLK	Screw Clamp	Aluminum (Round)	9.35 lb (4.24 kg)	65 in (1.65 m)	Triangle / Flat	Black	

Cross Reference Table

Bags and Cases For Instrument Tripods



BAGS	PAGE NUMBER	TRIPODS WILL FIT	
8150-20-ORG	Pg. 62	Every Tripod Except for; 90558, 90560, 5321-17-ORG	
8153-10-ORG	Pg. 62	5321-17-ORG and 5115-00	
8154-00-ORG	Pg. 62	5119-00	
8154-10-ORG	Pg. 62	5300-11 and 5300-12	
8154-11-ORG	Pg. 62	Every Tripod Except for; 90558, 90560, 5321-17-ORG	
8154-12-ORG	Pg. 62	5119-10	
8160-31	Pg. 62	Every Tripod Except for; 90558	

Leveling Rod Accessories



- Use with aluminum leveling rods
- Weighs 0.50 lb (0.23 kg)



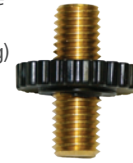
7321-050 — Leveling Rod Vial

- These replacement rod button kits fit on SECO aluminum leveling rods



70014-6 — Round 17 mm Button
70014-7 — Round 13 mm Button w/ Ring

- Adapt the thread size to 5/8 x 11 for mounting prisms on the LR's female adapter
- Weighs 0.20 lb (0.09 kg)



91133 — 5/8 x 11 Double Male Prism Adapter

- USL/SVR Hook



91275 — USL/SVR Hook

- Swiss-Style Prism Adapter



91259 — Swiss-Style Prism Adapter

- 6-inch long caliper for SVR/Oval rods and CMR ruler



91014 — 6-inch Caliper for SVR/Oval Rods and CMR Ruler

- Snap-Tite® SVR Rod Level



91255 — Snap-Tite SVR Rod Level

- Snap-Tite CR Rod Level



91535 — Snap-Tite CR Rod Level

- The Leveling Plates (or Turtles as they are commonly known) are cast heavy steel and red powder painted for durability
- Other quality features include chrome plating on the dome, carrying handle and ground points
- Use to improve the accuracy of level runs in soft terrain
- Diameter 5.51 in (14 cm)
- Diameter of half ball 1.81 in (3 cm)
- Height of half ball 0.79 in (2 cm)
- Height of foot to top half ball 2.60 in (6.6 cm)
- Weighs 4.41 lb (2.00 kg)



7304-01 — Leveling Plate (Turtle)

- 5/8 x 11 Prism Mounting Adapter Kit



91258 — 5/8 x 11 Prism Mounting Adapter Kit

- This 6.5 ft nylon-coated tape is ideal for foundation work, grading, swimming pools and construction
- Easy-to-read numbers printed on both sides
- The blade also features a built-in target



7321-00 — 6.5 ft Pocket Rod - inches
7301-00 — 6.5 ft Pocket Rod - 10ths

- This bipod features a special head that will hold a rectangular rod
- The head will fit rods with widths between 1.57 and 2.56 inches



5217-21-FOR — Leveling Rod Thumb Release Bipod

- This bipod features a special head that will hold a rectangular rod
- The head will fit rods with widths between 2.95 and 3.8 inches
- Depth: 1.75 inches



5217-20-FLY — Invar Rod Thumb Release Bipod

'E' Pattern Builder's Rods

Dual-sided lightweight rod



FEATURES & BENEFITS

- Features a standard 'E' pattern
- Lightweight aluminum sections are in contrasting white, red and black colors and have round spring-loaded locking buttons

- Graduations are cm on the front
- Height scale is in millimeters on the back
- 7341-45 and -55 models have a standard scale on the back
- Includes a level vial and case

APPLICATIONS

- Grading
- Masonry
- Site work
- Forms
- Landscaping
- Foundations
- Sewers
- Slab work



Part No.
7341-31

PART NO.	LENGTH	GRADS	WEIGHS	
7341-41	4 m	cm	3.10 lb (1.40 kg)	
7341-45	4 m	mm	3.10 lb (1.40 kg)	
7341-51	5 m	cm / mm	3.80 lb (1.73 kg)	
7341-52	5 m	cm / inches	3.80 lb (1.73 kg)	
7341-55	5 m	cm / mm	3.80 lb (1.73 kg)	
7341-56	5 m	UK cm / mm	3.80 lb (1.73 kg)	

Aluminum Builder's Rods

Light and durable anodized leveling rods



FEATURES & BENEFITS

- ▶ These aluminum leveling rods are made of a light and durable alloy
- ▶ The telescopic sections are anodized and silk-screened with moisture-resistant ink
- ▶ Each rod section uses sturdy polycarbonate buttons that lock each section when extended; the height gauge is on the back side
- ▶ Each rod includes a special level and protective bag

APPLICATIONS

- ▶ Grading
- ▶ Masonry
- ▶ Site work
- ▶ Forms
- ▶ Landscaping
- ▶ Foundations
- ▶ Sewers
- ▶ Slab work

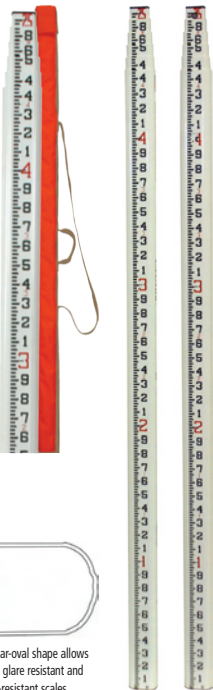
Part No.
7321-30

*Replacement buttons PN: 70014-6 or 70014-7 (see page 42)

PART NO.	SECTIONS	LENGTH	GRADS	WEIGHS	
7321-30	3	9 ft, 9.5 in	8ths	2.40 lb (1.10 kg)	
7301-30	3	9.8 ft	10ths	2.40 lb (1.10 kg)	
7321-40	4	13 ft, 1.38 in	8ths	3.10 lb (1.40 kg)	
7301-40	4	13.12 ft	10ths	3.10 lb (1.40 kg)	
7341-40	4	4 m	5 mm	3.10 lb (1.40 kg)	
7321-50	5	16 ft, 4.75 in	8ths	3.50 lb (1.60 kg)	
7301-50	5	16.4 ft	10ths	3.50 lb (1.60 kg)	

Surveyor's Series (SVR) Leveling Rods

Waterproof and wear-resistant



Rectangular-oval shape allows for wide, glare resistant and wear-resistant scales.

FEATURES & BENEFITS

- ▶ Features a new shorter collapsed length (58.5 inches on 25 ft versions) and a lighter weight
- ▶ Constructed of strong, rigid fiberglass with reinforcing ribs for added stability
- ▶ Water-resistant and non-conductive
- ▶ A tight locking mechanism features round buttons that resist jamming from sand and dirt
- ▶ Includes a 1/4 x 20 female adapter in top section

APPLICATIONS

- ▶ Grading
- ▶ Masonry
- ▶ Site work
- ▶ Forms
- ▶ Landscaping
- ▶ Foundations
- ▶ Sewers
- ▶ Slab work

Part No.
98010

Includes carrying case. Order 91411 for replacement carrying case – see page 63

PART NO.	HEIGHT SCALE	LENGTH	GRADS	WEIGHS	
98010	Height Scale	25 ft (7.6 m)	10ths	6.00 lb (2.72 kg)	
98011	Height Scale	25 ft (7.6 m)	8ths	6.00 lb (2.72 kg)	
98012	Height Scale	25 ft (7.6 m)	0.5 cm metric	6.00 lb (2.72 kg)	
98013	Height Scale	25 ft (7.6 m)	'E' metric	6.00 lb (2.72 kg)	
98014	Height Scale	25 ft (7.6 m)	Philly metric	6.00 lb (2.72 kg)	
98015	Dual Scale	25 ft (7.6 m)	8ths / 10ths	6.00 lb (2.72 kg)	
98016	Dual Scale	25 ft (7.6 m)	10ths / Philly Metric	6.00 lb (2.72 kg)	
98017	Dual Scale	25 ft (7.6 m)	10ths / 10ths	6.00 lb (2.72 kg)	
98020	Height Scale	17 ft (5.18 m)	10ths	5.00 lb (2.27 kg)	
98021	Height Scale	17 ft (5.18 m)	8ths	5.00 lb (2.27 kg)	
98023	Height Scale	17 ft (5.18 m)	'E' metric	5.00 lb (2.27 kg)	
98024	Height Scale	17 ft (5.18 m)	Philly metric	5.00 lb (2.27 kg)	
98025	Dual Scale	17 ft (5.18 m)	8ths / 10ths	5.00 lb (2.27 kg)	
98026	Dual Scale	17 ft (5.18 m)	10ths / Philly metric	5.00 lb (2.27 kg)	

SVR Brackets for Laser Receivers

Easily attaches to SVR rods



FEATURES & BENEFITS

- ▶ Brackets are needed to attach laser sensors to the SVR rod
- ▶ Top or side brackets are available for all popular laser receiver models

APPLICATIONS

- ▶ Use with an SVR rod to mount your laser receiver

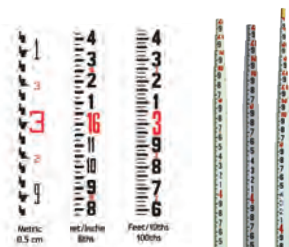


Part No. 91100

PART NO.	MOUNT TYPE	DESIGNED FOR	
91100	Top	Universal	
91162	Top	Storm® HL700/750/450	
91163	Side	Storm HL700/750/450	

Standard/Pro Series (LR) Leveling Rods

Round rod is wind resistant



FEATURES & BENEFITS

- ▶ The LR Series leveling rods are round and easy to handle
- ▶ The LR-STD is available in a 25 ft model in 10ths, inches, and 0.5 cm metric scales

- ▶ The LR-PRO is larger in diameter so sturdier and easier to read
- ▶ The LR-PRO is available in 25 ft, 35 ft and 45 ft lengths in feet/10ths/100ths

APPLICATIONS

- ▶ Grading
- ▶ Masonry
- ▶ Site work
- ▶ Forms
- ▶ Landscaping
- ▶ Foundations
- ▶ Sewers
- ▶ Slab work



Part No.
90004

Includes carrying case. Order 91402 for replacement carrying case – see page 63

PART NO.	LENGTH	OUTSIDE DIAMETER	GRADS	WEIGHS	
90004	LR-STD 25 ft	1-5/8 inch	10ths	5.00 lb (2.26 kg)	
90009	LR-STD 25 ft	1-5/8 inch	8ths	5.00 lb (2.26 kg)	
90014	LR-STD 7.6 m	1-5/8 inch	Metric	5.00 lb (2.26 kg)	
90022	LR-PRO 25 ft	2 inch	10ths	7.00 lb (3.17 kg)	
90024	LR-PRO 35 ft	2-3/16 inch	10ths	9.00 lb (4.08 kg)	
90026	LR-PRO 45 ft	2-3/16 inch	10ths	10.00 lb (4.53 kg)	

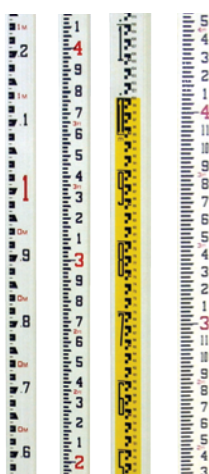


Round design makes the LR Series rods a good choice for certain applications like in areas of high wind.



Rectangular Series (CR) Leveling Rods

Rounded back corners for better gripping



FEATURES & BENEFITS

- ▶ Features a rectangular shape with rounded back corners for better gripping
- ▶ Scale width is graduated to fill the entire face of the rod and measuring scale on the back side that allows for overall height readings

- ▶ For laser detector mounting with no special brackets required
- ▶ Made with strong fiberglass which is waterproof, corrosion-resistant and non-conductive
- ▶ Features 1/4 x 20 female adapter in the top section

APPLICATIONS

- ▶ Grading
- ▶ Masonry
- ▶ Site work
- ▶ Forms
- ▶ Landscaping
- ▶ Foundations
- ▶ Sewers
- ▶ Slab work



Part No.
92001

Includes carrying case. Order 91410 for 8 ft or 91411 for 13 - 20 ft replacement carrying case – see page 63

PART NO.	LENGTH	GRADS	WEIGHS	
92001	8 ft	10ths	3.00 lb (1.36 kg)	
92002	8 ft	8ths	3.00 lb (1.36 kg)	
92021	13 ft	10ths	5.00 lb (2.26 kg)	
92022	13 ft	8ths	5.00 lb (2.26 kg)	
92041	16 ft	10ths	6.00 lb (2.72 kg)	
92042	16 ft	8ths	6.00 lb (2.72 kg)	
92031	20 ft	10ths	7.00 lb (3.17 kg)	
92032	20 ft	8ths	7.00 lb (3.17 kg)	
92026	4.0 m	'E' metric	5.00 lb (2.26 kg)	
92027	4.0 m	0.5 cm metric	5.00 lb (2.26 kg)	
92046	5.0 m	'E' metric	6.00 lb (2.72 kg)	
92047	5.0 m	0.5 cm metric	6.00 lb (2.72 kg)	
92048	5.0 m	British 'E' metric	6.00 lb (2.72 kg)	
92043	5.0 m	Philly metric	6.00 lb (2.72 kg)	



Rectangular shape allows for laser detectors to be mounted directly to the rod - no bracket required!



SubSurface® Handheld Magnetic Locators

Built by the team with the most experience in the industry



FEATURES & BENEFITS

- ▶ Both models come with an industry exclusive 7 year warranty
- ▶ Choose the standard model or the LCD meter model
- ▶ Tube-through construction ensures strength and durability from the bottom tip to the handle
- ▶ Overall length: 38.75 in (98.4 cm)
- ▶ The system comes with a padded carrying bag and four alkaline 9-volt batteries — two to use and two spares

- ▶ Waterproof from bottom tip to LCD box
- ▶ Weighs 2.00 lb (0.91 kg)

APPLICATIONS

- ▶ Perfect for locating survey corner markers, PK and Mag Nails, valve and covers, steel and iron pipes, well casings, steel tanks, lost tools or even downed and buried fence lines

Part No.
ML-1

Hard-shell case is impact resistant ABS plastic construction (ML-1-050, sold separately)

ML-1 — SubSurface Handheld Magnetic Locators Standard Model
 ML-1M — SubSurface Handheld Magnetic Locators With LCD Meter
 ML-1-050 — Hard Shell Case for Locators



SubSurface® Waterproof Magnetic Locator



Close up of four-button keypad and LCD monitor

FEATURES & BENEFITS

- ▶ Features include 'Zero Adjust' that compensates for 'magnetic gradient' in the soil
- ▶ Single narrow LCD monitor is built into the four-button keypad and features a bar graph that expands according to signal strength
- ▶ A '+' or '-' illuminates above the graph to indicate polarity
- ▶ 100% waterproof - tube pressure tested to depths up to 200 ft

- ▶ The SSI computer microprocessor retains volume and gain settings from last use
- ▶ Detects buried ferrous metal objects at depths up to 8 feet
- ▶ Sturdy tube-through-construction ensures stability and long life
- ▶ Includes soft carrying/storage case with carrying straps and inside pocket for spare 9-volt batteries
- ▶ Both models have 7 year warranty

APPLICATIONS

- ▶ Perfect for locating survey corner markers, PK and Mag Nails, valve and covers, steel and iron pipes, well casings, steel tanks, lost tools or even downed and buried fence lines

Part No.
ML-35Y

PART NO.

OVERALL LENGTH

BATTERY LIFE

WEIGHT

ML-35Y

40 in (1 m)

60 hours

1.80 lb (0.80 kg)



Rhino Ruler®
Engineer's Folding Ruler

Waterproof fiberglass outlasts wood rulers



FEATURES & BENEFITS

- ▶ Waterproof fiberglass construction prevents common problems that occur with wood rulers such as fading, splintering, and chipping

- ▶ Engraved graduations resist weather and scratches
- ▶ Easy-to-fold locking joints are tighter than traditional folding rulers made of wood allowing for a more accurate measurement along the ruler's length

APPLICATIONS

- ▶ General construction

Part No.
4770-00

4770-00 — Rhino Ruler Waterproof Fiberglass Engineer's Folding Ruler - 10ths / 8ths
 4770-01 — Rhino Ruler Waterproof Fiberglass Engineer's Folding Ruler - 10ths / Metric

CMR Series Measuring
Rulers and Cases

Designed for one-person measuring



FEATURES & BENEFITS

- ▶ A versatile tool for fast, accurate, one-person measuring, the CMR Series is the tool for measuring heights, clearances and horizontal distances up to fifty feet

- ▶ The rod is equipped with a female 1/4 x 20 adapter in the top section
- ▶ Made of rugged, non-conductive fiberglass and includes a carrying case and calliper tip

- ▶ Carrying cases are made from the highest quality 1000-denier nylon

Part No.
90180

PART NO.	LENGTH	WEIGHT	OD	REPLACEMENT CARRY CASE	OD CASE MEASUREMENTS	
90180	25 ft (7.6 m)	5.00 lb (2.27 kg)	1-13/16 inch	91415	3.5 x 65 in (8.89 x 165.1 cm)	
90181	36 ft (11 m)	9.00 lb (4.08 kg)	2-7/32 inch	91416	4.5 x 68 in (11.43 x 172.72 cm)	
90182	50 ft (15.2 m)	12.00 lb (5.44 kg)	2-13/32 inch	91417	4.5 x 76 in (11.43 x 193.04 cm)	

Gopher Pole
Wire Installation Tool

Installing wires across ceiling spans is a lot easier with this unique fiberglass pole



FEATURES & BENEFITS

- ▶ With its long, adjustable span of up to 22 feet, the Gopher Pole makes wiring easy in hard-to-reach areas such as suspended ceilings, sub-foors, crawl spaces and attics
- ▶ Ideal for pushing/pulling wire over long spans and acoustic ceiling tiles
- ▶ Telescopes from 4 to 22 feet (1.22 to 6.70 meters) in seconds

- ▶ Features a positive-locking system that won't accidentally collapse
- ▶ Features a strong but malleable metal tip that allows for easy shaping of the hook
- ▶ Sturdy and lightweight with no loose parts; constructed of durable non-conductive fiberglass
- ▶ Includes a carrying case

APPLICATIONS

- ▶ Utility Companies
- ▶ Electrical Contractors
- ▶ Electrical Supply Distributors
- ▶ Communications
- ▶ Data Network Solutions
- ▶ Commercial And Industrial Lighting
- ▶ Security Equipment Firms
- ▶ General Interior Construction

Part No.
90520

90520 — Gopher Pole Wire Installation Tool
 91415 — Carrying Case



Stream Gauges Plate Numbers

Sturdy fiberglass assures a long life, will not rust or corrode



FEATURES & BENEFITS

- ▶ Number plates may be used to customize elevations for a particular application

- ▶ All stream gauges are 1/8-inch thick and the pre-drilled holes for mounting have a diameter of 1/4-inch

APPLICATIONS

- ▶ Monitoring the water level of rivers, creeks, streams, bays etc.

PART NO.	NUMBER PLATE	MEASURES	
99060	0 (zero)	2-1/4 x 4 inches	
99061	1 (one)	2-1/4 x 4 inches	
99062	2 (two)	2-1/4 x 4 inches	
99063	3 (three)	2-1/4 x 4 inches	
99064	4 (four)	2-1/4 x 4 inches	
99065	5 (five)	2-1/4 x 4 inches	
99066	6 (six)	2-1/4 x 4 inches	
99067	7 (seven)	2-1/4 x 4 inches	
99068	8 (eight)	2-1/4 x 4 inches	
99069	9 (nine)	2-1/4 x 4 inches	
99070	- (Minus)	2-1/4 x 4 inches	

Hand Levels

1X and 2X Magnification



4040-05



4040-60



4040-30



4300-00



4200-00

FEATURES & BENEFITS

- ▶ Features brass bodies, a non-glare internal finish, high-visibility neon yellow vials, and three-line mirrors
- ▶ The 1X model (4040-05), 5 inch (127 mm) hand level extends to 7 inches (178 mm) and has an external vial that is easily replaced in the field
- ▶ The 1X model, (4040-60) is an economically priced 5 inch (127 mm) hand level and has an external vial that is easily replaced in the field

- ▶ The 2X model (4040-30) is a heavy-duty 5 inch (127 mm) hand level that extends to 7 inches (178 mm) and has an external vial that is easily replaced in the field
- ▶ 2X model (4300-00) is a heavy-duty, 5 inch (127 mm) hand level that extends to 7 inches (178 mm) and features an enclosed vial
- ▶ The 2X model (4200-00) is the industry standard 6 inch (152 mm) hand level that extends to 7 inches (178 mm) and has an enclosed vial

- ▶ Case included
- ▶ 4040-05 and 4040-60 weigh 0.30 lb (0.14 kg)
- ▶ 4040-30 weighs 0.35 lb (0.16 kg)
- ▶ 4200-00 and 4300-00 weigh 0.40 lb (0.18 kg)

- 4040-05 — 5 to 7 inch, 1X External Vial
- 4040-60 — 5 inch, 1X External Vial
- 4040-30 — 5 to 7 inch, 2X External Vial
- 4200-00 — 6 to 7 inch, 2X Internal Vial
- 4300-00 — 5 to 7 inch, 2X External Vial



- ▶ The Abney level is ideal for preliminary survey or landscaping, where the determination of slope, angle and percentage is required
- ▶ Measures 5.25 inches (133 mm) in length
- ▶ Weighs 0.15 lb (0.07 kg)



4050-01 — Abney Hand Level

- ▶ Made from padded Nylon Cordura is perfect for your level
- ▶ Measures 6.5 x 2.62 inches (16.5 x 6.66 cm)
- ▶ Weighs 0.05 lb (0.02 kg)

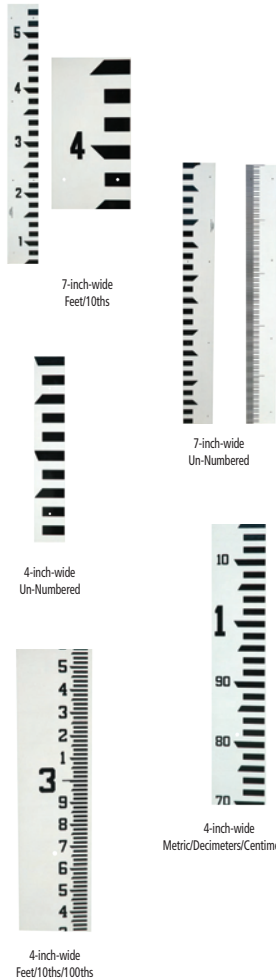
Replacement case for all hand levels shown above



8030-00-CABLU — Hand Level Case

Stream Gauges

Allows you to instantly see water levels



FEATURES & BENEFITS

- ▶ Stream Gauges allow you to instantly see water levels
- ▶ Fiberglass stream gauges are the best permanent marker in a variety of applications and environments
- ▶ Sturdy fiberglass assures a long life, it does not rot, rust or corrode
- ▶ Stream gauges are provided in separate units that can be used separately or combined for convenient measuring
- ▶ Easy to read at long distances, gauges are protected with a non-glare coating and are easy to mount

APPLICATIONS

- ▶ Stainless steel fasteners are provided which will attach to most surfaces including metal, masonry, wood, and many other surface types
- ▶ 1/8 inch thick and the pre-drilled holes for mounting have a diameter of 1/4 inch
- ▶ Gauges may be ordered in successive increments to form ranges and elevations
- ▶ Number plates (sold separately) may be used to customize elevations for a particular application



Part No.
99000

7-inch Stream Gauges feature 2-1/4 inch (5.72 cm) tall numbers
4-inch Stream Gauges features 1-1/4-inch (3.175 cm) tall numbers
Use unnumbered gauges for height beyond 15.5 ft, 16 ft, or 3.66 m as needed

PART NO.	DESCRIPTION	LENGTH	WIDTH	GRADS	WEIGHS	
99000	Un-Numbered	4 ft	4 inch (10.2 cm)	feet / 10ths / 100ths	2.00 lb (0.91 kg)	
99001	4 ft	0 - 4 ft	4 inch (10.2 cm)	feet / 10ths / 100ths	2.00 lb (0.91 kg)	
99002	4 ft	4 - 8 ft	4 inch (10.2 cm)	feet / 10ths / 100ths	2.00 lb (0.91 kg)	
99003	4 ft	8 - 12 ft	4 inch (10.2 cm)	feet / 10ths / 100ths	2.00 lb (0.91 kg)	
99004	4 ft	12 - 16 ft	4 inch (10.2 cm)	feet / 10ths / 100ths	2.00 lb (0.91 kg)	
99023	Un-Numbered	4 ft	4 inch (10.2 cm)	feet / 10ths	2.00 lb (0.91 kg)	
99051	1.22 m	0 - 1.22 m	10.2 cm (4 inch)	m / dm / cm	2.00 lb (0.91 kg)	
99052	1.22 m	1.22 - 2.44 m	10.2 cm (4 inch)	m / dm / cm	2.00 lb (0.91 kg)	
99053	1.22 m	2.44 - 3.66 m	10.2 cm (4 inch)	m / dm / cm	2.00 lb (0.91 kg)	
99071	Un-Numbered	5 ft	7 inch (17.78 cm)	feet / 10ths / 100ths	4.00 lb (1.81 kg)	
99072	Un-Numbered	5 ft	7 inch (17.78 cm)	feet / 10ths	4.00 lb (1.81 kg)	
99079	5 ft	0.5 - 5.5 ft	7 inch (17.78 cm)	feet / 10ths	4.00 lb (1.81 kg)	
99080	5 ft	5.5 ft - 10.5 ft	7 inch (17.78 cm)	feet / 10ths	4.00 lb (1.81 kg)	
99081	5 ft	10.5 - 15.5 ft	7 inch (17.78 cm)	feet / 10ths	4.00 lb (1.81 kg)	

Mounting Hardware For Stream Gauges

Included with purchase of any Stream Gauge



FEATURES & BENEFITS

- ▶ Includes 7 sets of stainless steel screws and anchors

- ▶ Contains 14 each of screws and anchors packaged in packs of four

APPLICATIONS

- ▶ Monitoring the water level of rivers, creeks, streams, bays etc.



Part No.
99043

99043 — Mounting Hardware for Stream Gauges



Magnetic Dampened Auto Level and Packages

Easy-to-use 24X and 32X auto-levels



FEATURES & BENEFITS

- ▶ The 32X auto level features a sturdy metal Japanese-style body with a magnetic dampened compensator
- ▶ Fits 5/8 x 11 flat or domed tripods
- ▶ The top cover plate is easily removed for adjustment
- ▶ Accurate to 1/16 inch per 100 feet (with good weather conditions)
- ▶ Includes carrying case
- ▶ Air dampened auto compensator
- ▶ Double-sided, continuous horizontal tangent drives
- ▶ Stadia lines for simple distance measurement
- ▶ Water resistant construction
- ▶ Convenient horizontal angle measurement
- ▶ Built in bubble mirror and optical sighting alignment
- ▶ Metal housing for increased durability
- ▶ Kit comes with 5301-25-BLK tripod; rod in kit may be inches or mm

APPLICATIONS

- ▶ Two-person leveling across the job site
- ▶ Leveling forms and footers
- ▶ Checking elevation
- ▶ Measuring cut and fill

Part No.
4811-24

PART NO.	POWER/DAMPENING	TRIPOD	ROD	
4811-24	24X / Magnetic Dampened	No	None	
4811-24P1	24X / Magnetic Dampened	Yes	9 ft, 8ths / feet	
4811-24P2	24X / Magnetic Dampened	Yes	9 ft, 10ths / feet	
4811-24P3	24X / Magnetic Dampened	Yes	3 m, Metric	
4811-24P4	24X / Magnetic Dampened	Yes	13 ft, 8ths / feet	
4811-24P5	24X / Magnetic Dampened	Yes	13 ft, 10ths / feet	
4811-24P6	24X / Magnetic Dampened	Yes	4 m, Metric	
4811-24P7	24X / Magnetic Dampened	Yes	16 ft, 8ths / feet	
4811-24P8	24X / Magnetic Dampened	Yes	16 ft, 10ths / feet	
4811-32	32X / Magnetic Dampened	No	None	
4811-32P1	32X / Magnetic Dampened	Yes	9 ft, 8ths / feet	
4811-32P2	32X / Magnetic Dampened	Yes	9 ft, 10ths / feet	
4811-32P3	32X / Magnetic Dampened	Yes	3 m, Metric	
4811-32P6	32X / Magnetic Dampened	Yes	4 m, Metric	

SPECIFICATIONS	4811-24	4811-32	AL24A	AL24M	AL32A
Magnification	24X	32X	24X	24X	32X
Objective Diameter	36 mm	42 mm	30 mm	30 mm	36 mm
Field of View Angle	1° 20'	1° 20'	1° 20'	1° 20'	1° 20'
Shortest Focusing Distance	0.3 m	0.3 m	0.6 m	0.6 m	0.6 m
Stadia Constant	100	100	100	100	100
Additive Constant	0	0	0	0	0
Compensator Dampening	Magnetic	Magnetic	Air	Magnetic	Air
Compensator Range	±15'	±15'	±15'	±15'	±15'
Compensator Setting Accuracy	<0.5"	<0.5"	<0.5"	<0.5"	<0.3"
Double Run Leveling per 1 km	2 mm	1 mm	2 mm	2 mm	1 mm
Circular Vial Accuracy	8/2 mm	8/2 mm	8/2 mm	8/2 mm	8/2 mm
Horizontal Circle	1°	1°	1°	1°	1°
Base Plate	5/8 x 11	5/8 x 11	5/8 x 11	5/8 x 11	5/8 x 11
Color	Red	Red	Yellow	Yellow	Yellow
Weight	3.97 lb (1.80 kg)	3.97 lb (1.80 kg)	3.50 lb (1.60 kg)	3.50 lb (1.60 kg)	3.50 lb (1.60 kg)

PART NO.	POWER/DAMPENING	TRIPOD	ROD	
AL24A	24X / Air Dampened	No	None	
AL24A-1	24X / Air Dampened	Yes	16 ft, 10ths	
AL24A-2	24X / Air Dampened	Yes	16 ft, inches	
AL24A-3	24X / Air Dampened	Yes	5 m, metric	
AL24M	24X / Magnetic Dampened	No	None	
AL24M-1	24X / Magnetic Dampened	Yes	16 ft, 10ths	
AL24M-2	24X / Magnetic Dampened	Yes	16 ft, inches	
AL24M-3	24X / Magnetic Dampened	Yes	5 m, metric	
AL32A	32X / Air Dampened	No	None	

Construction Theodolite

Full-featured digital theodolite for construction



DE-50
Optional eye piece sold separately

FEATURES & BENEFITS

- ▶ Designed for general construction applications
- ▶ The Spectra Precision DET-2 digital electronic theodolite gives you accurate measurements in an affordable, versatile, easy to use platform
- ▶ Offers dual displays and controls for easy accessibility and operation, very large backlit LCD characters for easy reading (also, reduces eye strain and chance for errors), and a host of features and parameters normally found on much higher priced instruments
- ▶ Fast investment payback is the goal of the Spectra Precision DET-2
- ▶ With its 2-second accuracy (1- or 5-second selectable display readings) and vertical axis compensation, it can handle any construction job
- ▶ Operating costs are kept low with the included rechargeable battery pack and charger
- ▶ Able to be fully customized for your preferred operating style or job, with programmable settings for the horizontal angle resolution and beep, vertical degrees or %, automatic shutoff (to save battery life), and zenith angle
- ▶ A backup alkaline pack holding four standard AA batteries is also included
- ▶ Includes a built-in reticle illuminator that allows you to work inside buildings and other environments with little or no light, such as near dawn or dusk
- ▶ You can count on working in difficult conditions with an environmental rating of IP-54 making it water and dust-proof
- ▶ Comes equipped with a plumb bob, NiMH rechargeable battery pack and charger, alkaline battery pack, adjustment tools, rain hood, multi-language user guide, and hard-shell carrying case
- ▶ Accurate enough for any job, yet the display resolution can be tailored to any operator's preferences for fast readings
- ▶ Vertical axis compensation can be turned on or off depending on the operator or job
- ▶ Programmable settings for the horizontal angle resolution and beep, vertical degrees or percent are easy to configure
- ▶ The recharge kit reduces operating costs and downtime
- ▶ For Specifications see website

APPLICATIONS

- ▶ Establishing 90 degree reference lines
- ▶ Checking angles, alignment, and plumb
- ▶ Anchor bolt alignment
- ▶ Gravity flow pipe laser setup
- ▶ Steel column placement
- ▶ Alignment of forms, tilt-up walls, and curtain walls
- ▶ Basic grade work
- ▶ Short range leveling



Part No.
DET-2

DET-2 — Construction Theodolite
DE-50 — Diagonal Eye Piece



Batter Board Clamp

Accessories and components for rotating lasers



FEATURES & BENEFITS

- ▶ Attaches to boards with thicknesses up to 2.17 in (55 mm)
- ▶ Mounting plate with its 5/8 x 11 screw can easily be removed when connecting it to a laser or theodolite
- ▶ Nail hole ensures that a theodolite's axis is positioned exactly over the reference point
- ▶ Soft-touch locking knobs prove comfortable when using in cold and wet weather
- ▶ 3-point contact for secure, sturdy grip
- ▶ Quick release clamp for quick instrument attachment
- ▶ Weighs 2.43 lb (1.10 kg)

APPLICATIONS

- ▶ Perfect for a laser for vertical applications or Theodolites



Part No.
4852-14

4852-14 — Batter Board Clamp



Bullseye 6 Laser Receiver

Four selectable accuracies for each on-grade location



FEATURES & BENEFITS

- ▶ Angle compensation automatically calculates and corrects grade display for the angle of the dipper arm
- ▶ Check grade with the dipper arm extended or retracted up to 30°
- ▶ Plumb indication built in - for quick and accurate grade checking for excavators and backhoes

- ▶ Offset on-grade - for productive excavation
- ▶ Center On-grade - for grading operations - use on dozers, graders, scrapers, box blades
- ▶ Up to 8 channels of grade information plus directional out of beam indicators

APPLICATIONS

- ▶ Highly accurate distance measurement



Part No.
AT1991320-02

PART NO.	POWER SOURCE	COLOR	
AT1991320-02	Alkaline	Red	
AT1991320-09	Alkaline	Yellow	
AT1991326-02	Rechargeable NiMH	Red	
AT1991326-09	Rechargeable NiMH	Yellow	

Bullseye 5+ Laser Receiver

Up to six channels of grade information



FEATURES & BENEFITS

- ▶ Built-in blade tilt indication helps the operator keep the blade level or the stick plumb for increased production and accuracy
- ▶ Can be programmed to match an existing or known grade for slope matching operations
- ▶ Center on-grade provides an equal amount of grade information above and below on-grade
- ▶ For grading and excavating machinery

- ▶ Plumb indication is built in for quick and accurate grade checking
- ▶ Offset on-grade provides more information above grade utilizing the entire receiver for productive excavation
- ▶ Three selectable accuracies for each on grade location and up to six channels of grade information plus directional out of beam indicators

APPLICATIONS

- ▶ Highly accurate distance measurement



Part No.
AT1991370-02

PART NO.	POWER SOURCE	COLOR	
AT1991370-02	Alkaline	Red	
AT1991370-09	Alkaline	Yellow	
AT1991376-02	Rechargeable NiMH	Red	
AT1991376-09	Rechargeable NiMH	Yellow	

Bullseye 3+ Laser Receiver

Use on dozers, graders, scrapers, and box blades



FEATURES & BENEFITS

- ▶ Adapts to grading and excavating machinery
- ▶ Easy to move from one machine to another
- ▶ 3 selectable accuracies - work from rough grading to final finishing

- ▶ Bright LED's with green on-grade
- ▶ 5 channels of grade information plus directional out of beam indicators

APPLICATIONS

- ▶ Highly accurate distance measurement



Part No.
AT1991340-02

PART NO.	POWER SOURCE	COLOR	
AT1991340-02	Alkaline	Red	
AT1991340-09	Alkaline	Yellow	
AT1991346-02	Rechargeable NiMH	Red	
AT1991346-09	Rechargeable NiMH	Yellow	

Bullseye Magnetic Mounts

Use with Bullseye Receivers



FEATURES & BENEFITS

- ▶ Both magnetic mount models can be used with all Bullseye receivers
- ▶ Two magnet banks combine for 900 pounds of holding force

- ▶ Easy to slide receiver up and down
- ▶ Easy removal is accomplished using a release lever
- ▶ Features a large vertical adjustment range for quicker laser set-ups

APPLICATIONS

- ▶ Highly accurate distance measurement



Part No.
AT1991360-02

AT1991360-02 — Bullseye Magnetic Mount - For Backhoe and Excavator
AT1991364-02 — Bullseye Magnetic Mount - For Flat Back Dozer Blades



Bullseye Receiver Accessories

PART NO.	BULLSEYE RECEIVER ACCESSORIES	
AT1010972-15	Receiver cable, straight, 15 ft	
AT1010972-20	Receiver cable, straight, 20 ft	
AT1010972-25	Receiver cable, straight, 25 ft	
AT1010972-35	Receiver cable, straight, 35 ft	
AT1010972-50	Receiver cable, straight, 50 ft	
AT1010983	Machine power cable, lighter adapter, 2-8 ft	
AT1010987-25	Machine power cable, ring terminals, 25 ft	
AT1991604	Universal battery charger with wall plugs	
AT1010536-025	Bullseye carrying case (Red)	
AT1010976-02	Swivel mount (shown in AT1991570)	

Wall/Column Bracket for Lasers and Total Stations

Dual mounting options enable flexibility on the construction job site



FEATURES & BENEFITS

- ▶ SECO's 4852-17 is a dual-use bracket for lasers and total stations
- ▶ Mounts easily to columns (or corners) and flat walls
- ▶ The unique design allows quick and easy separation for dual usage
- ▶ 5/8 x 11 platform holds the instrument 5 inches from the wall/column surface

- ▶ A ratchet and strap secures the bracket to columns up to 20 inches (use Extension Strap #D12328 for larger columns, offering 37 to 69 inches of extra length)
- ▶ Multiple nail/screw holes enable wall mounting
- ▶ Features a powder coated steel frame
- ▶ Weighs 5.00 lb (2.30 kg)

APPLICATIONS

- ▶ For use with Lasers and Total Stations on large construction sites



Part No.
4852-17

4852-17 — Wall/Column Bracket for Lasers and Total Stations



Heavy Duty Instrument Column Clamp

Mounts to structural columns for stability and support for heavy instruments



FEATURES & BENEFITS

- ▶ SECO's Heavy Duty Column Clamp has a solid stable design and works with all 5/8 x 11 instruments
- ▶ The adjustable column rotates and moves vertically to orient the instrument when needed and features 12 inches (30.48 cm) of height adjustment
- ▶ Centerline of the 5.8 x 11 stud to column measures 15 inches (38.1 cm)
- ▶ Includes 20 inch standard 3/4 inch NPT Pipe with Heavy Duty sliding clamp
- ▶ Constructed of structural aluminum for industrial applications and stainless steel hardware
- ▶ Weight is 15 lbs (6.8 kg)

APPLICATIONS

- ▶ For use with Robotic Total Stations and scanners
- ▶ Ideal for mounting theodolites, lasers, etc.



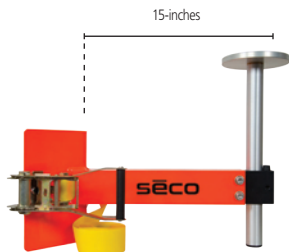
Part No.
4852-17

Order 2"X10 ft ratchet strap kit 4852-18-050 as needed for different mounting options

4852-18 — Heavy Duty Instrument Column Clamp

Heavy-Duty Instrument Column Clamp

Mounts to structural columns for stability and support for heavy instruments



FEATURES & BENEFITS

- ▶ SECO's Heavy-Duty Column Clamp has a solid stable design and works with all 5/8 x 11 instruments
- ▶ The adjustable column rotates and moves vertically to orient the instrument when needed and features 12-inches (30.48 cm) of height adjustment
- ▶ Centerline of the 5/8 x 11 stud to column measures 15-inches (38.1-cm)
- ▶ Includes a 2-inch (5.08 cm) by 10-ft (3.05-m) strap rated for a 2200 pound load and a heavy-duty ratchet to create a strong connection to both round and square columns
- ▶ Constructed of structural aluminum for industrial applications and stainless steel hardware
- ▶ Weighs 13.75 lb (6.24 kg)

APPLICATIONS

- ▶ For use with Robotic Total Stations and scanners
- ▶ Ideal for mounting theodolites, lasers, etc.



Part No.
4852-16

4852-16 — Heavy-Duty Column Clamp

Rotating Laser Column Clamp

Accessories and components for rotating lasers



FEATURES & BENEFITS

- ▶ Works with all 5/8 x 11 instruments
- ▶ Column rotates to orientate the instrument when needed and features 1 ft (30 cm) of height adjustment
- ▶ Center-line of the 5/8 x 11 stud to column measures 6.5 in (16.5 cm)
- ▶ Designed to fit both round and square columns
- ▶ A ratchet strap quickly tightens the column clamp into place to create a strong connection to columns with diameters up to 20 inches (0.5 m)
- ▶ Made of aluminum and stainless steel
- ▶ An Extension Strap is also available (D12328, sold separately) which adds 37 to 69 in (94 to 175.2 cm) to the existing strap for big columns
- ▶ Weighs 5.10 lb (2.32 kg)

APPLICATIONS

- ▶ Perfect for lasers or Theodolites

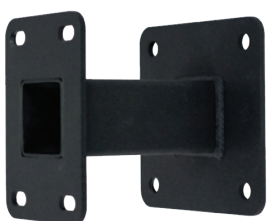


Part No.
4852-15

4852-15 — Column Clamp

Wall Mount Bracket

Simple and secure set-up for any ferrous metal surfaces



FEATURES & BENEFITS

- ▶ Strong one-piece construction
- ▶ Designed to hold U-Bolts for 2- or 3-inch (50.8- or 7.62-cm) diameter pipe
- ▶ 4 x 0.69-inch (10.16 x 1.75-cm) wall mounting holes on 6-inch (15.24 cm) centers*
- ▶ 8-inch (203-mm) stand off from flat wall surface

*Installation hardware not included

2072-60 — Wall Mount Bracket

- ▶ Welded 1/2-inch (6.35-mm) steel
- ▶ Powder painted wrinkle black
- ▶ Weighs 9.15 lb (4.20 kg)



Hydration Backpack

Stay hydrated on the job while maintaining workplace safety



FEATURES & BENEFITS

- ▶ 20 x 8 inches (50.8 x 20.32 cm)
- ▶ Chest strap with side release buckle
- ▶ 4-inch (101.6 mm) wide fabric with 2-inch (50.8 mm) wide reflective tape (same as safety vest)
- ▶ 1-inch (25.4 mm) wide polypropylene webbing allows shoulder straps to adjust
- ▶ 1000D Cordura Nylon is bonded to the 1/4-inch (6.35 mm) back padding

- ▶ Neoprene sleeve surrounds the hydration tube
- ▶ Bladder size 2.5 liters (84.5 fl oz)
- ▶ When bladder is completely full the hydration pack is 5 inches (127 mm) thick
- ▶ Mod-U-Lox® keeps hydration tube secure on either strap, allowing access to the bite valve for either right or left handed use (one on each side)
- ▶ Weighs (with water) 6.70 lb (3.03 kg)
- ▶ Weighs (without water) 1.20 lb (0.54 kg)

APPLICATIONS

- ▶ Workplace Safety
- ▶ Construction environment



Part No.
8125-60-FOR

8125-60-FOR — Hydration Backpack



Utility Bags and Miscellaneous Cases

Designed to keep your field equipment and supplies safe and secure



- ▶ Features four exterior deep-zipped pockets — two front and two side
- ▶ Two interior pockets — 14 x 12 x 2 inches with hook-and-loop closures
- ▶ Heavy-duty nylon webbing carrying straps
- ▶ Measures 30 x 14 x 20 inches (76.2 x 35.6 x 50.8 cm)
- ▶ Weighs 3.78 lb (1.72 kg)



8106-10-ORG — Monster Gear Bag



- ▶ Excellent for carrying surveying accessories, clothing, and other miscellaneous gear
- ▶ Made of heavy-duty water resistant polyester
- ▶ Measures 27 x 11 x 11 inches (69 x 28 x 28 cm)
- ▶ Weighs 1.56 lb (0.71 kg)



8106-20-ORG — Surveyor's Gear Bag with Rhinotek Bottom



- ▶ Fits most large controllers like the Ranger™ series, Allegro, TSC3™
- ▶ Features a Velcro® flap closure, belt loop and shoulder strap
- ▶ Main compartment measures 10.25 x 5.25 x 2 inches (26 x 13.3 x 5 cm)
- ▶ Padded with 0.25 in (6.35 mm) 1000D Cordura material with khaki trim
- ▶ Outside pocket is 6 x 5 in (15 x 12.7 cm)
- ▶ Weighs 0.35 lb (0.16 kg)



8142-01-ORG — Large Controllers Case



- ▶ Features include an outside pocket with a Velcro closure and 2 inch straps made with heavy-duty webbing
- ▶ Also features a Rhinotek™ and leather reinforced bottom
- ▶ Measures 10.25 x 15 inches (26 x 38 cm)
- ▶ Weighs 1.30 lb (0.59 kg)



8095-20-ORG — Heavy-Duty Collapsible Bucket Bag



- ▶ This case holds the Trimble® Pathfinder® ProXH™ or the ProXT™ GNSS unit securely
- ▶ Weighs 0.45 lb (0.20 kg)



8143-21-YEL — Trimble Pathfinder Series Pole Case



- ▶ Secure your cell phone to any survey pole without slipping
- ▶ Inside dimensions: 5 x 2.5 x 1.5 inches (12.7 x 6.35 x 3.81 cm)
- ▶ Weighs 0.10 lb (0.45 kg)



8143-22-FLY — GNSS Rod Cell Phone Case



- ▶ The MiFi Hotspot Case secures any MiFi unit to any GNSS survey pole or prism pole
- ▶ Easily attaches to a GNSS or prism pole with the metal clamp on case
- ▶ This pouch stays in place; it will not slip down the pole
- ▶ Features a window to clearly view the installed unit activity
- ▶ Works with all MiFi Hotspots and most smart phones on the market today
- ▶ A Velcro strap keeps unit safely inside clear pouch
- ▶ Inside dimensions 6 x 4.25 inches (15.24 x 10.8 cm)
- ▶ Constructed of heavy-duty Cordura®
- ▶ Comes in fluorescent yellow
- ▶ Weighs 0.35 lb (0.16 kg)



8143-40-FLY — MiFi Hotspot Case



Tool Pouches

Designed to keep your tools safe and organized



- Features include an 11 x 7 inch (28 x 18 cm) and 6 x 4 inch (15 x 10 cm) pouches
- Has slots for markers, a loop for axes or hammers
- Weighs 0.40 lb (0.18 kg)

8046-20-ORG — Construction-Style Tool Pouch 

- Features a 9 x 2 x 11 inch (22.9 x 5.08 x 27.9 cm) pocket
- Large pocket is lined with two layers of 1000D Cordura
- Webbed belt adjusts to a 50 inch (127 cm) waist
- Includes a hammer loop and marker storage
- Weighs 1.05 lb (0.48 kg)

8046-30-ORG — Surveyor's Tool Pouch with Belt 

GNSS Pole and Tripod Bags

Designed to keep your GNSS tripods and rods safe and secure



- This bag features heavy-duty Cordura® and reinforced Rhinotek™ material
- Shoulder strap is included
- Use with Heavy-Duty GNSS Antenna Tripods (5119-10)
- Measures: 8 inch ID x 56 inches (20.32 x 142.24 cm)
- Weighs 1.80 lb (0.82 kg)

8154-12-ORG — Heavy-Duty GNSS Tripod Bag 

- Replacement carrying case for Radio Antenna Tripod
- Case comes included when you purchased the Radio Antenna Tripod (5300-11 & 5300-12)
- Outside Dimensions: 8 inches x 54 inches

8154-10-ORG — Radio Antenna Tripod Carrying Case 

- Use with our Collapsible GNSS Antenna Tripod (5119-00) or other conventional tripods
- Designed to carry the tripod without the point on the center pole to prevent damage to the pole
- Features a full length heavy-duty zipper
- Weighs 1.70 lb (0.77 kg)
- Inside Dimensions: 7" x 50"

8154-00-ORG — Collapsible GNSS Antenna Tripod Bag 

- Features a full-length zipper and shoulder strap
- Measures: 82 x 9 OD inches (208.28 x 22.86 OD cm)
- Weighs 1.88 lb (0.85 kg)

8153-10-ORG — Extra-Large Antenna Tripod Bag 

- Designed to protect the rods during transportation or storage
- 5.5 ID x 41 inches long with a 10" flap
- Weighs 0.45 lb (0.20 kg)

8162-00-ORG — GPS Rover Rod Carrying Case 

- This bag holds a 2 meter Snap-Lock pole and bipod or tripod (connected)
- Constructed of tough Cordura material and Rhinotek ends
- Measures 56 inches long (1.42 m)
- Weighs 1.50 lb (0.68 kg)

8151-02-FLY — Heavy-Duty Snap-Lock 2-Meter Pole System Bag 

Instrument Tripod Bags and Cases

Designed to keep your instrument tripods safe and secure



- The SECO Instrument Tripod Bag holds all major brands of aluminum and wooden tripods
- Made of heavy-duty nylon Cordura, with a Rhinotek bottom, and pull string ties at the top
- Measures: 52 x 8.75 OD inches (132 x 22.23 OD cm)
- 8150-20 weighs 1.85 lb (0.84 kg)

8150-20-ORG — Heavy-Duty Tripod Bag with Rhinotek Bottom 

- Fits all tripods, 47-inches (1.2-m) or less collapsed
- Full-length aluminum hinge with four fold-down latches
- Two carry handles: one on the side, one on the end
- Internal #2 EPE foam tripod cutout, two securing straps
- Hard 0.125 ABS bracket pad to prevent tripod points from penetrating the foam
- Area for business card and shipping labels
- Replaceable wheels
- Hard durable black ABS plastic
- Size: 49.125 x 12.12 x 11.27 inches (125 x 30.78 x 28.63 cm)
- Weighs 24.75 lb (11.25 kg)

8160-31 — Hard Tripod Case with Wheels 

- Heavy-duty bag for carrying many different brands of tripods, including SECO and Tri-Max
- Features zipper closure
- Measures: 48 x 8 OD inches (121.9 x 20.3 OD cm)
- Weighs 1.80 lb (0.82 kg)

8154-11-ORG — Super-Duty Tripod Bag 

Rover Rods and Prism Pole Tripod Cases

Designed to keep your Rover rod, Robotics pole and Prism pole tripods safe and clean



- ▶ Store your two-piece rover rod in this hard shell case and know it's protected
- ▶ Measures 4 ID x 41 in (10.16 ID x 104.14 cm)
- ▶ Weighs 3.20 lb (1.40 kg)



8162-20-BLK — GNSS Rover Rod Hard Shell Case



- ▶ External and internal side pockets hold extra gear
- ▶ Measurements: 6 OD x 58 inches (15.25 OD x 147.32 cm)
- ▶ Weighs 2.70 lb (1.23 kg)



8157-01-ORG — Long Padded System Bag



- ▶ Designed to carry a prism pole with tripod attached
- ▶ Has a fold-over flap and shoulder strap
- ▶ Made from nylon Cordura and durable Rhinotek
- ▶ Measures: 7.5 ID x 60 inches (19.1 ID x 152 cm)
- ▶ Weighs 1.55 lb (0.70 kg)



8180-20-ORG — Heavy-Duty Prism Pole Tripod Bag



- ▶ Protect your prism or range pole from dirt and moisture
- ▶ Measures: 61.5 x 6 in (156.21 x 15.24 cm)
- ▶ Weighs 0.68 lb (0.31 kg)



8160-00-ORG — Prism or Range Pole Protective Bag



- ▶ The heavy-duty material-covered tube holds one- or two-section poles or rods
- ▶ Measures: 65 inches (1.63 m) in length
- ▶ Use to protect and carry your pole or rod
- ▶ Weighs 5.50 lb (2.50 kg)



8160-20-BLK — Prism Pole Hard Shell Case



Assorted Rod Carrying Cases

Designed to keep your One Shot, DE rod, Range pole, LR-STD, LR-PRO and CR rod safe and clean



- ▶ This carrying case is made from the highest quality 1000-denier nylon
- ▶ Water-resistant
- ▶ Measures: 4.5 x 82 inches (11.4 x 208.3 cm)
- ▶ Weighs 0.45 lb (0.20 kg)



91402 — LR-STD/LR-PRO Carrying Case



- ▶ Fits 13 ft (4 m), 16 ft (5 m) and 20 ft (6 m) rods
- ▶ Made from 1000-denier nylon
- ▶ Water-resistant
- ▶ Measures: 4.25 x 65.5 inches (10.8 x 166.4 cm)
- ▶ Weighs 0.45 lb (0.20 kg)



91411 — CR-13/16/20 ft / SVR-16/25 Carrying Case



- ▶ Textured heavy-duty poly
- ▶ Measures 7.5 x 46 inches (19.05 x 116.84 cm)
- ▶ Weighs 0.48 lb (0.22 kg)



8170-00-ORG — Range Pole Case



- ▶ Fits 8 ft (2.4 m) rods
- ▶ Made from 1000-denier nylon
- ▶ Water-resistant
- ▶ Measures: 3.5 x 56.5 inches (8.9 x 143.5 cm)
- ▶ Weighs 0.30 lb (0.14 kg)



91410 — CR-8 ft/2.4m Carrying Case



BACK BY POPULAR DEMAND!

This DE Rod Bag, previously discontinued, has been brought back through customer requests

- ▶ Extremely durable Cordura(R) bag with reinforced bottom
- ▶ Pocket for a sensor bracket
- ▶ Shoulder strap included
- ▶ 4 x 71 inch (10.16 x 180.34 cm)
- ▶ Weighs 0.5 lb (0.23 kg)



8166-01-ORG — Direct Elevation Rod Bag



CMR Measuring Ruler Cases

- ▶ Made from the highest-quality 1000-denier nylon.
- ▶ For use with our rugged fiberglass CMR Series Measuring Rulers 90180, 90181 and 90182, and for gopher pole 90520 on page 47.

PART NO.	SIZE	
91415	3.5 x 65 in (8.89 x 165.1 cm)	
91416	4.5 x 68 in (11.43 x 172.72 cm)	
91417	4.5 x 76 in (11.43 x 193.04 cm)	



Lath and Stake Bags

Designed to hold your lath and stakes secure



- ▶ Carries up to 50 lath or rebar
- ▶ Measures 9 x 38 inches (2.54 x 96.52 cm)
- ▶ Weighs 0.22 lb (0.10 kg)



8102-01-ORG — 38 inch Lath Carrier



- ▶ Carries up to 50 lath or rebar
- ▶ Measures 9 x 38 inches (2.54 x 96.52 cm)
- ▶ Weighs 0.22 lb (0.10 kg)



8102-00-ORG — Lath Carrier



- ▶ Heavy-duty lath carrier fits 36 or 48-inch lath
- ▶ Features space inside for any standard 12 inch, five-gallon bucket
- ▶ Weighs 1.50 lb (0.68 kg) without bucket and approx. 3.85 lb (1.75 kg) with bucket added



8104-20-ORG — Heavy-Duty Bucket Lath Carrier



- ▶ Holds 36 or 48 inch (84 or 122 cm) wood lath
- ▶ Features a hand loop, shoulder strap, and outside pocket
- ▶ Weighs 0.80 lb (0.36 kg)

8100-00-ORG — 8 ID x 36 inches Lath Bag
8101-00-ORG — 8 ID x 48 inches Lath Bag

- ▶ Holds 24 inch (61 cm) wood lath
- ▶ Features a hand loop, shoulder strap, outside pocket
- ▶ 8 inch (20.3 cm) inside diameter
- ▶ Weighs 0.40 lb (0.18 kg)



8103-20-ORG — Heavy-Duty Rhinotek Lath Bag



- ▶ Use to carry 21 inch (53 cm) or 30 inch (76 cm) flags
- ▶ 8093-00-ORG weighs 0.22 lb (0.10 kg)
- ▶ 8094-00-ORG weighs 0.28 lb (0.13 kg)

8093-00-ORG — Wire Stake Flag Bag for 21 in Flags
8094-00-ORG — Wire Stake Flag Bag for 30 in Flags

- ▶ The main compartment of this bag is constructed of tough Rhinotek™ material and designed to hold 18 inch stakes or rebar
- ▶ Include hammer loop, adjustable strap and brass grommet drain holes — the 8091-20-ORG features a partition
- ▶ Standard bag weighs 1.55 lb (0.70 kg)
- ▶ Partitioned bag weighs 1.70 lb (0.77 kg)

8090-20-ORG — Heavy-Duty 18-inch Bag for Stakes or Rebar
8091-20-ORG — Heavy-Duty 18-inch Bag w/ Center Partition

- ▶ Heavy-Duty Lath Bag but with Rhinotek material on the bottom and six inches up the sides
- ▶ Designed in two sizes: 8 inches wide by 36 or 48 inches deep
- ▶ Both weigh approximately 1.50 lb (0.68 kg)

8100-20-ORG — 36 inch Heavy-Duty Lath or Rebar Bag
8101-20-ORG — 48 inch Heavy-Duty Lath or Rebar Bag

- ▶ This stake bag is the same as the 8090-20-ORG, but holds 24 inch stakes
- ▶ Features a Rhinotek bottom
- ▶ Standard bag weighs 1.70 lb (0.77 kg)
- ▶ Partitions bag weighs 1.60 lb (0.73 kg)

8092-20-ORG — Heavy-Duty 24-inch Bag for Stakes or Rebar
8096-20-ORG — Heavy-Duty 24-inch Bag w/ Center Partition

- ▶ Choose between a standard spray can holder or a holder with updated features like four pockets for pens/pencils and a heavy web strap
- ▶ Both weighs approximately 1.00 lb (0.45 kg)

8098-00-ORG — Standard Spray Can Holder
8098-10-ORG — With Accessory Pockets (shown)

Front and Top Loading Total Station Cases

Heavy-duty cases for your Total Station



FEATURES & BENEFITS

- ▶ Features a Rhinotek™ bottom and durable backpack straps

- ▶ Measures between the pads: 14 x 9 x 7 in (35.6 x 22.9 x 17.8 cm)

APPLICATIONS

- ▶ Keeps your total station safe and secure during transport

Part No.
8120-00-ORG

PART NO.	LOADING SPACE	FEATURES	WEIGHS	
8120-00-ORG	Front Loading	Cloth Frame	5.75 lb (2.61 kg)	
8121-00-ORG	Top Loading	Cloth Frame	5.75 lb (2.61 kg)	
8123-00-ORG	Top Loading	Aluminum Frame	7.50 lb (3.40 kg)	

Total Station, GIS and GNSS Backpacks

Designed to keep your Total Station, GIS and GNSS equipment safe and secure



- ▶ This pack includes a cam-lock antenna pole, adjustable straps, several interior pockets, belt loop straps, rain flap and much more
- ▶ Interior dimensions (measured between the pads): 15 x 9 x 4 in
- ▶ Pole extends from 16.5 to 36.5 inches (41.91 to 92.71 cm)
- ▶ Has 5/8 x 11 tip on antenna pole
- ▶ Weighs 2.00 lb (0.91 kg)



8125-50-ORG — Small GIS Backpack



- ▶ The Total Station Backpack is similar in style to a commercially available lightweight day pack
- ▶ Main compartment has an innovative 'wrap' made of 3/8-inch high-density foam with hook and loop adjustment that securely cradles all total stations
- ▶ Features extra pockets and Rhinotek™ bottom
- ▶ Weighs 2.40 lb (1.10 kg)



8120-30-ORG — 400 mm Total Station Backpack (shown)
8120-40-ORG — 500 mm Total Station Backpack



- ▶ Features a double-zipped, top-loading station compartment lined with rigid foam padding, two side pockets for cables, and one front battery pocket
- ▶ Comfortable padded belt with lumbar back support system, shoulder straps with all-point adjustment features, and a rubberized carrying handle
- ▶ The free-standing aluminum frame keeps the pack upright even when fully loaded
- ▶ Has a top rain flap with closure and rain flaps on the side pockets
- ▶ Features a Rhinotek bottom
- ▶ Interior dimensions (measured between the pads): 17 x 10 x 10 in
- ▶ Exterior dimensions: 24.5 x 15 x 16 in
- ▶ Weighs 8.00 lb (3.62 kg)
- ▶ Holds 40 lb (18.14 kg)



8134-00-ORG — Robotics Backpack



- ▶ This pack, which includes cool mesh and foam back pad, offers a convenient and comfortable way to transport and manage GIS instrumentation
- ▶ Features include a built-in pocket for CamelBak® or other hydration systems
- ▶ Includes a protective rain flap
- ▶ Also features adjustable internal pockets; padded, adjustable shoulder straps, and waist belt
- ▶ Constructed of heavy-duty, high-vis polyester
- ▶ Interior dimensions: 20 x 9.5 x 4 in
- ▶ Includes a 5/8 x 11 tip
- ▶ Weighs 2.80 lb (1.27 kg)



8125-11-ORG — Large GIS Backpack with Cam-Lock Antenna Pole



Prism and Tribrach Bags

Designed to keep prisms and tribrachs secure

Prism and Tribrach Bags make excellent tablet bags for the field!



- ▶ Heavily padded for single prisms
- ▶ Interior dimensions (measured between the pads): 5 x 7 x 2 inches
- ▶ Weighs 0.48 lb (0.22 kg)



8070-00-ORG — Single Prism Bag



- ▶ For triple prisms and prism targets or tribrachs
- ▶ Interior dimensions (measured between the pads): 10 x 9.5 x 3 inches
- ▶ Weighs 1.06 lb (0.48 kg)



8081-00-ORG — Jumbo Triple Prism Bag



- ▶ Heavily padded for triple prisms
- ▶ Interior dimensions (measured between the pads): 9 x 7 x 2 inches
- ▶ Weighs 0.75 lb (0.34 kg)



8080-00-ORG — Triple Prism Bag



- ▶ Easily holds a tribrach
- ▶ Interior dimensions (measured between the pads): 6 x 6 x 2 inches
- ▶ Weighs 0.40 lb (0.18 kg)



8071-00-ORG — Tribrach Case



- ▶ Holds a tilting prism with tribrach and adapter
- ▶ Interior dimensions (measured between the pads): 12 x 12 x 3 inches
- ▶ Weighs 1.85 lb (0.84 kg)



8082-00-ORG — Super Jumbo Padded Bag



- ▶ Designed for vertical triple prism assemblies
- ▶ Holds target with tribrach and adapter
- ▶ Interior dimensions (measured between the pads): 15 x 8 x 2 inches
- ▶ Available in Orange
- ▶ Weighs 1.45 lb (0.66 kg)



8130-00-ORG — Tall Triple Prism Bag



**ChrisNik MagNails®,
MagSpikes® and MagHubs®**

Corrosion resistant and magnetized for easy detection



- ▶ Mag Nails have been coated with an environmentally friendly zinc and clear chromate to resist corrosion
- ▶ Stronger, more durable, higher quality, magnetic and longer lasting than other nails
- ▶ Mag Nails are larger and magnetic making them easier to locate using the naked eye or a locator
- ▶ Each box includes 100 Mag Nails

- ▶ Constructed of premium steel that produces the most durable survey marker in the industry
- ▶ Like the Mag Nail the Mag Spike is magnetized for easy detection
- ▶ Featuring a large center point and 1-inch (25.4 mm) diameter head makes it great for control points and property corners
- ▶ Made in the USA

- ▶ The Mag Hub is magnetized for easy detection and zinc plated to resist corrosion
- ▶ Featuring a large center point and looks like a standard survey marker
- ▶ Not made to be driven into asphalt or concrete
- ▶ Easy to carry and less expensive than stakes
- ▶ Mag Hubs come in a 30 lb (13.61 kg) box approximate quantities are below



PART NO.	SIZE	QUANTITY	WEIGHTS	
Chrisnik MagNails				
24750-CS	3/4 x 1/8 inch	100 per box, 12 box per case	7 lb/case	
241000-CS	1 x 5/32 inch	100 per box, 12 box per case	11 lb/case	
241250-CS	1 1/4 x 3/16 inch	100 per box, 12 box per case	18 lb/case	
241500-CS	1 1/2 x 1/4 inch	100 per box, 12 box per case	33 lb/case	
242000-CS	2 x 1/4 inch	100 per box, 12 box per case	41 lb/case	
242500-CS	2 1/2 x 1/4 inch	100 per box, 12 box per case	48 lb/case	
Chrisnik MagSpikes				
253MAGSPIKE	3/8 x 3 inch	25 per box	2.5 lb (1.13 kg)	
254MAGSPIKE	3/8 x 4 1/2 inch	25 per box	4.00 lb (1.18 kg)	
256MAGSPIKE	3/8 x 6 inch	20 per box	4.00 lb (1.18 kg)	
258MAGSPIKE	3/8 x 8 inch	20 per box	5.00 lb (2.27 kg)	
Chrisnik MagHubs				
23MAGHUB4	3/16 x 4 inch	Approx...885	30.00 lb (13.61 kg)	
23MAGHUB6	1/4 x 6 inch	Approx...367	30.00 lb (13.61 kg)	
23MAGHUB8	1/4 x 8 inch	Approx...272	30.00 lb (13.61 kg)	

**Flagging Dispenser
and Marker**

- ▶ Permanent marker are leak-proof with a seamless metal body
- ▶ Chisel tip marks are extremely durable on wood, metal, and more
- ▶ AP certified non-toxic
- ▶ Box of 12 weighs 3.75 lb (1.70 kg)



9060-14 — Dixon Redimark Marker - Black



- ▶ The steel Presco Roll Flagging Belt Dispenser is a convenient time-saver
- ▶ Weighs 1.30 lb (0.59 kg)



8025-00-ORG — Padded Flagging Dispenser



Miscellaneous Accessories

- Choose between a 17.5 inch blade and a 13 inch blade for clearing that thick underbrush on the job site
- Weighs approx. 1.00 lb (0.45 kg)



9500-17 — 17.5 inch blade, includes sheath
9500-13 — 13 inch blade, includes sheath



- 9500-01 for knife and scissor sharpening
- 9500-02 for Axes or other edged tool sharpening
- 9500-01 weighs 0.05 lb (0.02 kg)
- 9500-02 weighs 0.20 lb (0.09 kg)



9500-01 — For knives and scissors
9500-02 — For hand tools



- Shot bags are great for holding down maps or blueprints in windy conditions
- Weighs 1.50 lb (0.68 kg)



8010-10-BLU — Cordura Shot Bag



- Lightweight aluminum center punches are great for marking a variety of materials or punching starter holes for nails or drill bits
- Durable removable-tip scribes are perfect for making quick and accurate marks on hard work pieces
- The scribe features a durable tungsten carbide point that is able to make precise marks to 1/100th of an inch
- The magnetic cap quickly cleans up stray metal shavings



9068-02 — Heavy-Duty Center Punch
9068-03 — Carbide Scribe



- Replacement caps and points fit all SECO plumb bobs



6000-001 — Plumb Bob Cap
6000-002 — Plumb Bob Point



- Pin cushion for holding stake tacks



25456855 — Stake Tacks 1 LB
2180-00 — Regular Tac Ball
2180-01 — Tac Ball with Clip



- The 3/16 inch spring steel, 14 inch pins are powder-painted red and white, alternating at each inch
- Quiver (8041-00-ORG) sold separately
- Weighs 1.54 lb (0.70 kg)



2183-00 — Marking Pins 11 count



- The Gammon Reel® is almost a given on any job site
- The 24 yard (22 m) refillable cord comes in many colors



6001-06 — Gammon Reel 7 ft (2 m)
6001-12 — Gammon Reel 12 ft (3.7 m)



- 24 yard (22 m) bobbin of Gammon Reel refill cord
- Available in flo red, flo yellow and orange



6001-FR — Gammon Reel Refill - Flo Red
6001-FY — Gammon Reel Refill - Flo Yellow
6001-OR — Gammon Reel Refill - Orange



- Each solid brass bob features a hardened steel point and a storage area for a spare point



6000-012	12 oz	340 g	
6000-014	14 oz	397 g	
6000-016	16 oz	454 g	
6000-018	18 oz	510 g	
6000-024	24 oz	680 g	
6000-032	32 oz	907 g	

- Heavy-duty sheath is double stitched top grain leather with a belt loop for SECO plumb bobs



6000-120 — Leather Sheath for 10-12 oz (283-340 g)
6000-160 — Leather Sheath for 14-18 oz (397-454 g)
6000-240 — Leather Sheath for 24-32 oz (510-907 g)



- 10 lb of Shiners with bag included
- 2181-10 - approximate qty: 1,125
- 2182-10 - approximate qty: 1,300
- Weighs 10.00 lb (4.53 kg)



2181-10 — Bulk Shiners - Flat
2182-10 — Bulk Shiners - Raised



- Raised Shiners are 1.94 in (49.3 mm) OD
- Features a raised 29 mm center
- Weighs 1.00 lb (0.45 kg)



2182-00 — Raised Shiners, 260 count



- Flat shiners are 2.25 in (57.2 mm) OD
- Featuring punched centers with crimped edges
- Weighs 2.60 lb (1.18 kg)



2181-00 — Flat Shiners, 250 count

