



PELICAN™ AIR

THE LIGHTEST PROTECTOR CASES ON THE PLANET.

At up to 40% lighter than other polymer cases, Pelican™ Air cases will lighten the loads of the dedicated pros around the world who have set out to change the game.

Pelican™ Air cases are the first in a series of remarkable innovations engineered by Pelican, the pioneers of protective cases. For over 40 years Pelican has manufactured the most influential protective cases in the world, and we're just getting started.

With the launch of the Pelican™ Air line of cases, we're redefining the future of protection with a remarkable union of light and tough.

THE SCIENCE BEHIND LIGHTNESS

- Honeycomb structural elements that are actually stronger than solid polymer material
- Molded from the next generation of Pelican's lightweight HPX™ resin, a proprietary formula that rebounds without breaking

UP TO THE TEST

- Submerged for 30 minutes at a depth of one meter
- Drop-tested on concrete (with loads from six feet) on all sides and corners
- Wheels are roll tested over 1,000 yards with loads at 5 mph
- 28 lb. steel dart dropped on all sides from 3 feet

Look for this icon for wheels on select models.



New Deep Sizes

1485 AIR

INTERNAL DIMS:
17.75" x 10.18" x 6.15"
(45.1 x 25.9 x 15.6 cm)

EXTERNAL DIMS:
19.17" x 12.80" x 6.89"
(48.7 x 32.5 x 17.5 cm)

■ ■ ■ ■ ■

Cat. No. 1485**
Cat. No. 1485NF***
Cat. No. 1485WD****
Cat. No. 1485TP*****



1555 AIR

INTERNAL DIMS:
23.00" x 12.75" x 7.50"
(58.4 x 32.4 x 19.1 cm)

EXTERNAL DIMS:
24.76" x 15.46" x 8.24"
(62.9 x 39.3 x 20.9 cm)

■ ■ ■ ■ ■

Cat. No. 1555**
Cat. No. 1555NF***
Cat. No. 1555WD****
Cat. No. 1555TP*****



1607 AIR

INTERNAL DIMS:
21.05" x 15.81" x 11.63"
(53.5 x 40.2 x 29.5 cm)

EXTERNAL DIMS:
24.13" x 18.80" x 13.25"
(61.3 x 47.8 x 33.7 cm)

■ ■ ■ ■ ■

Cat. No. 1535**
Cat. No. 1607NF***
Cat. No. 1607WD****



1525 AIR

INTERNAL DIMS:
20.50" x 11.30" x 6.75"
(52.1 x 28.7 x 17.1 cm)

EXTERNAL DIMS:
21.96" x 13.97" x 7.49"
(55.8 x 35.5 x 19 cm)

■ ■ ■ ■ ■

Cat. No. 1525**
Cat. No. 1525NF***
Cat. No. 1525WD****
Cat. No. 1525TP*****



1557 AIR

INTERNAL DIMS:
17.33" x 13.00" x 9.75"
(44.0 x 33.0 x 24.8 cm)

EXTERNAL DIMS:
19.18" x 15.79" x 10.50"
(48.7 x 40.1 x 26.7 cm)

■ ■ ■ ■ ■

Cat. No. 1557**
Cat. No. 1557NF***
Cat. No. 1557WD****
Cat. No. 1557TP*****



1615 AIR WHEELED CHECK-IN

INTERNAL DIMS:
29.59" x 15.50" x 9.38"
(75.2 x 39.4 x 23.8 cm)

EXTERNAL DIMS:
32.58" x 18.40" x 11.02"
(82.8 x 46.7 x 28 cm)

■

Cat. No. 1615**
Cat. No. 1615NF***
Cat. No. 1615WD****
Cat. No. 1615TP*****



1535 AIR WHEELED CARRY-ON

INTERNAL DIMS:
20.39" x 11.20" x 7.20"
(51.8 x 28.4 x 18.3 cm)

EXTERNAL DIMS:
21.96" x 13.97" x 8.98"
(55.8 x 35.5 x 22.8 cm)

■ ■ ■ ■ ■

Cat. No. 1535**
Cat. No. 1535NF***
Cat. No. 1535WD****
Cat. No. 1535TP*****



1605 AIR

INTERNAL DIMS:
26.00" x 14.00" x 8.38"
(66 x 35.6 x 21.3 cm)

EXTERNAL DIMS:
28.87" x 16.77" x 9.12"
(73.3 x 42.6 x 23.2 cm)

■ ■ ■ ■ ■

Cat. No. 1605**
Cat. No. 1605NF***
Cat. No. 1605WD****
Cat. No. 1605TP*****



1637 AIR

INTERNAL DIMS:
23.43" x 17.55" x 13.25"
(59.5 x 44.6 x 33.7 cm)

EXTERNAL DIMS:
26.61" x 20.65" x 14.87"
(67.6 x 52.5 x 37.8 cm)

■ ■ ■ ■ ■

Cat. No. 1637**
Cat. No. 1637NF***
Cat. No. 1637WD****



MEMORY CARD & MICRO CASES

From small sensitive components to smartphones, protect your gear from the elements in a Memory Card Case or Micro Case from Pelican.

- WATER RESISTANT SEAL
- LIGHTWEIGHT INSERT LINER ABSORBS SHOCK AND PROTECTS MEMORY CARDS
- MADE OF TOUGH POLYCARBONATE RESIN

0915 CASE

INTERNAL DIMS:
4.79" x 2.25" x 0.55"
(12.2 x 5.7 x 1.4cm)

EXTERNAL DIMS:
5.55" x 3.27" x 0.85"
(14.1 x 8.3 x 2.2cm)

Cat. No. 0915

Stores 12 SD cards or
6 mini SD cards and
6 micro SD cards



0945 CASE

INTERNAL DIMS:
4.79" x 2.25" x 0.55"
(12.2 x 5.7 x 1.4 cm)

EXTERNAL DIMS:
5.55" x 3.27" x 0.85"
(14.1 x 8.3 x 2.2 cm)

Cat. No. 0945

Stores 6 compact
flash cards



0955 CASE

INTERNAL DIMS:
4.79" x 2.25" x 0.55"
(12.2 x 5.7 x 1.4 cm)

EXTERNAL DIMS:
5.55" x 3.27" x 0.85"
(14.1 x 8.3 x 2.2cm)

Cat. No. 0955

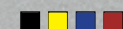
Holds keys, ID,
cards and cash



1010 MICRO CASE

INTERNAL DIMS:
4.37" x 2.87" x 1.68"
(11.1 x 7.3 x 4.3 cm)

EXTERNAL DIMS:
5.88" x 4.06" x 2.12"
(14.9 x 10.3 x 5.4 cm)



Cat. No. 1010

Available in clear with a colored rubber liner or
in solid colors with a black rubber liner. Pick N
Pluck™ foam inserts are available.



I1015 MICRO CASE

INTERNAL DIMS:
5.14" x 2.64" x 1.37"
(13.1 x 6.7x 3.5 cm)

EXTERNAL DIMS:
6.68" x 3.88" x 1.86"
(17x 9.9 x 4.7 cm)



Cat. No. i1015

Designed for iPhone™,
iPhone™ 4 and
iPod touch®



1040 MICRO CASE

INTERNAL DIMS:
6.50" x 3.87" x 1.75"
(16.5 x 9.8 x 4.4 cm)

EXTERNAL DIMS:
7.50" x 5.06" x 2.12"
(19 x 12.8 x 5.4 cm)



Cat. No. 1040

Available in clear with a colored
rubber liner or in solid colors with
a black rubber liner. Pick N Pluck™
foam inserts are available.



I1010 MICRO CASE

INTERNAL DIMS:
4.37" x 2.87" x 1.68"
(11.1 x 7.3 x 4.3 cm)

EXTERNAL DIMS:
5.88" x 4.06" x 2.12"
(14.9 x 10.3 x 5.4 cm)



Cat. No. i1010

Designed to protect iPod
classic®, iPod nano®, and
iPod shuffle®



EXTERNAL HEADPHONE JACK
LETS YOU LISTEN TO YOUR
PLAYER WHILE CASE IS CLOSED.

1020 MICRO CASE

INTERNAL DIMS:
5.31 x 3.56 x 1.68
(13.5 x 9 x 4.3 cm)

EXTERNAL DIMS:
6.82" x 4.75" x 2.12"
(17.3 x 12.1 x 5.4 cm)



Cat. No. 1020

Available in clear with a colored
rubber liner or in solid colors with
a black rubber liner. Pick N Pluck™
foam inserts are available.



1050 MICRO CASE

INTERNAL DIMS:
6.31" x 3.68" x 2.75"
(16 x 9.3 x 7 cm)

EXTERNAL DIMS:
7.50" x 5.06" x 3.12"
(19 x 12.8 x 7.9 cm)



Cat. No. 1050

Available in clear with a colored
rubber liner or in solid colors with
a black rubber liner. Pick N Pluck™
foam inserts are available.



1015 MICRO CASE

INTERNAL DIMS:
5.14" x 2.64" x 1.37"
(13.1 x 6.7 x 3.5 cm)

EXTERNAL DIMS:
6.68" x 3.88" x 1.86"
(17 x 9.9 x 4.7 cm)



Cat. No. 1015

Available in clear with a colored
rubber liner or in solid colors with
a black rubber liner. Pick N Pluck™
foam inserts are available.



1030 MICRO CASE

INTERNAL DIMS:
6.37" x 2.62" x 2.06"
(16.2 x 6.7 x 5.2)

EXTERNAL DIMS:
7.50" x 3.87" x 2.43"
(19 x 9.8 x 6.2 cm)



Cat. No. 1030

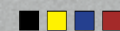
Available in clear with a colored
rubber liner or in solid colors with
a black rubber liner. Pick N Pluck™
foam inserts are available.



1060 MICRO CASE

INTERNAL DIMS:
8.25" x 4.25" x 2.25"
(20.9 x 10.8 x 5.7 cm)

EXTERNAL DIMS:
9.37" x 5.56" x 2.62"
(23.8 x 14.1 x 6.7 cm)



Cat. No. 1060

Available in clear with a colored
rubber liner or in solid colors with
a black rubber liner. Pick N Pluck™
foam inserts are available.

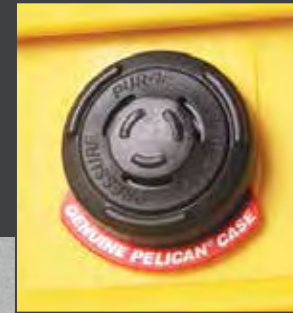


SMALL PROTECTOR CASES

Lightweight, but extremely strong; compact, yet fully capable. Perfect for valuable gear like hand tools and small to medium electronic components, hand held GPS systems, and DSLR cameras. All small cases are available empty or with pre-scored Pick N Pluck™ foam.

WATERTIGHT

The secret is the tongue-and-groove fit with a Polymer o-ring acting as a waterproof seal. Also, our Automatic Pressure Equalization Valve releases built-up air pressure while keeping water molecules out, resulting in a watertight case that is easy to open.



DIGITAL SURVIVAL CASES

1120 CASE

INTERNAL DIMS:
7.29" x 4.79" x 3.33"
(18.5 x 12.2 x 8.5 cm)

EXTERNAL DIMS:
8.41" x 6.76" x 3.87"
(21.4 x 17.2 x 9.8 cm)

■ ■ ■ ■ ■ ■ ■ *

Cat. No. 1120**
Cat. No. 1120NF***



1150 CASE

INTERNAL DIMS:
8.29" x 5.79" x 3.75"
(21 x 14.7 x 9.5 cm)

EXTERNAL DIMS:
9.44" x 7.80" x 4.29"
(24 x 19.8 x 10.9 cm)

■ ■ ■ ■ ■ ■ ■ *

Cat. No. 1150**
Cat. No. 1150NF***



1170 CASE

INTERNAL DIMS:
10.54" x 6.04" x 3.16"
(26.8 x 15.3 x 8 cm)

EXTERNAL DIMS:
11.64" x 8.34" x 3.78"
(29.6 x 21.2 x 9.6 cm)

■ ■ ■ ■ ■ ■ ■ *

Cat. No. 1170**
Cat. No. 1170NF***



1200 CASE

INTERNAL DIMS:
9.25" x 7.12" x 4.12"
(23.5 x 18.1 x 10.5 cm)

EXTERNAL DIMS:
10.62" x 9.68" x 4.87"
(27 x 24.6 x 12.4 cm)

■ ■ ■ ■ ■ ■ ■ *

Cat. No. 1200**
Cat. No. 1200NF***



1300 CASE

INTERNAL DIMS:
9.17" x 7.00" x 6.12"
(23.3 x 17.8 x 15.5 cm)

EXTERNAL DIMS:
10.62" x 9.68" x 6.87"
(27 x 24.6 x 17.4 cm)

■ ■ ■ ■ ■ ■ ■ *

Cat. No. 1300**
Cat. No. 1300NF***



1400 CASE

INTERNAL DIMS:
11.81" x 8.87" x 5.18"
(30 x 22.5 x 13.2 cm)

EXTERNAL DIMS:
13.37" x 11.62" x 6.00"
(33.9 x 29.5 x 15.2 cm)

■ ■ ■ ■ ■ ■ ■ *

Cat. No. 1400**
Cat. No. 1400NF***



i1065 HARDBACK™ CASE

INTERNAL DIMS:
9.96" x 7.76" x 0.81"
(25.3 x 19.7 x 2.1 cm)

EXTERNAL DIMS:
10.86" x 9.28" x 1.24"
(27.6 x 23.6 x 3.1 cm)

■

Cat. No. i1065
Designed to protect
Apple iPad® 2, 3 and 4



1070CC HARDBACK™ CASE

INTERNAL DIMS:
12.80" x 8.95" x 0.72"
(32.5 x 22.7 x 1.8 cm)

EXTERNAL DIMS:
15.29" x 11.96" x 1.6" (38.1
30.4 x 4.1 cm)

■

Cat. No. 1070CC
Designed to fit 13"
Ultrabook™ laptops



1075 HARDBACK™ CASE

INTERNAL DIMS:
11.11" x 7.92" x 1.63"
(28.2 x 20.1 x 4.1 cm)

EXTERNAL DIMS:
12.38" x 9.75" x 2.13"
(31.4 x 24.8 x 5.4 cm)

■

Cat. No. 1075*
Designed to protect various
electronics including external
hard drives



1055CC HARDBACK™ CASE

INTERNAL DIMS:
8.55" x 5.52" x 0.85"
(21.7 x 14 x 2.2 cm)

EXTERNAL DIMS:
9.42" x 7.02" x 1.24"
(23.9 x 17.8 x 3.1 cm)

■

Cat. No. 1055CC
Designed to protect the most
popular eReaders and 7 inch
tablets, also fits the new
iPad mini™



1065CC HARDBACK™ CASE

INTERNAL DIMS:
9.96" x 7.76" x 0.81"
(25.3 x 19.7 x 2.1 cm)

EXTERNAL DIMS:
10.86" x 9.28" x 1.24"
(27.6 x 23.6 x 3.1 cm)

■

Cat. No. 1065CC
Designed to protect most
10 inch tablets including iPad®,
iPad® 2, iPad® 2 with Smart Cover®,
iPad® 3, iPad® 3 with Smart Cover®



1075CC HARDBACK™ CASE

INTERNAL DIMS:
11.11" x 7.92" x 1.63"
(28.2 x 20.1 x 4.1 cm)

EXTERNAL DIMS:
12.38" x 9.75" x 2.13"
(31.4 x 24.8 x 5.4 cm)

■

Cat. No. 1075CC
(with netbook liner)
Designed to protect most popular netbooks up to 11.3" x 8.1" x 1.6"

P1075 HARDBACK™ CASE

INTERNAL DIMS:
11.11" x 7.92" x 1.63"
(28.2 x 20.1 x 4.1 cm)

EXTERNAL DIMS:
12.38" x 9.75" x 2.13"
(31.4 x 24.8 x 5.4 cm)

■

Cat. No. P1075*
Designed to fit pistols, revolvers and magazines

1085CC HARDBACK™ CASE

INTERNAL DIMS:
14.29" x 10.37" x 1.97"
(36.3 x 26.3 x 5 cm)

EXTERNAL DIMS:
15.64" x 12.41" x 2.50"
(39.7 x 31.5 x 6.3 cm)

■

Cat. No. 1085CC
(with laptop liner)
Designed to protect 14" laptops

i1075 HARDBACK™ CASE

INTERNAL DIMS:
11.11" x 7.92" x 1.63"
(28.2 x 20.1 x 4.1 cm)

EXTERNAL DIMS:
12.38" x 9.75" x 2.13"
(31.4 x 24.8 x 5.4 cm)

■

Cat. No. i1075
(with iPad® insert)
Designed to protect the iPad®, iPad®2 or iPad®2 with Smart Cover®

1085 HARDBACK™ CASE

INTERNAL DIMS:
14.29" x 10.37" x 1.97"
(36.3 x 26.3 x 5 cm)

EXTERNAL DIMS:
15.64" x 12.41" x 2.50"
(39.7 x 31.5 x 6.3 cm)

■

Cat. No. 1085*
Designed to protect 14" laptops

1095 HARDBACK™ CASE

INTERNAL DIMS:
15.78" x 11.16" x 2.06"
(40.1 x 28.3 x 5.2 cm)

EXTERNAL DIMS:
17.18" x 13.24" x 2.60"
(43.6 x 33.6 x 6.6 cm)

■

Cat. No. 1095*
Designed to protect 15" laptops

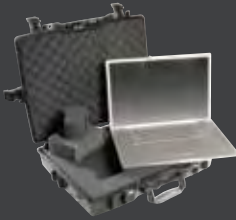
1095CC HARDBACK™ CASE

INTERNAL DIMS:
15.78" x 11.16" x 2.06"
(40.1 x 28.3 x 5.2 cm)

EXTERNAL DIMS:
17.18" x 13.24" x 2.60"
(43.6 x 33.6 x 6.6 cm)

■

Cat. No. 1095CC
(with laptop liner)
Designed to protect 15" laptops



EXTRA PROTECTION
Pelican's Pick N Pluck™ foam lets you customize the interior according to your gear. An easy, do-it-yourself system: layers of foam are pre-scored in tiny cubes. Simply measure your equipment over the grid and pluck away.

1470 CASE

INTERNAL DIMS:
15.70" x 10.70" x 3.87"
(39.9 x 27.2 x 9.8 cm)

EXTERNAL DIMS:
16.88" x 13.23" x 4.47"
(42.9 x 33.6 x 11.3 cm)

■ ■

Cat. No. 1470**
Cat. No. 1470NF***

1490CC2 CASE

INTERNAL DIMS:
17.75" x 11.37" x 4.12"
(45.1 x 28.9 x 10.5 cm)

EXTERNAL DIMS:
19.87" x 13.93" x 4.68"
(50.4 x 35.4 x 11.9 cm)

■ ■

Cat. No. 1490CC2
Case with lid organizer, Pick N Pluck™ foam, and removable shoulder strap

1495CC2 CASE

INTERNAL DIMS:
18.87" x 13.12" x 3.81"
(47.9 x 33.3 x 9.7 cm)

EXTERNAL DIMS:
21.62" x 17.25" x 4.87"
(54.9 x 43.8 x 12.4 cm)

■ ■ ■

Cat. No. 1495CC2
Case with lid organizer, Pick N Pluck™ foam, and removable shoulder strap

1490 CASE

INTERNAL DIMS:
17.75" x 11.37" x 4.12"
(45.1 x 28.9 x 10.5 cm)

EXTERNAL DIMS:
19.87" x 13.93" x 4.68"
(50.4 x 35.4 x 11.9 cm)

■ ■

Cat. No. 1490**
Cat. No. 1490NF***

1495 CASE

INTERNAL DIMS:
18.87" x 13.12" x 3.81"
(47.9 x 33.3 x 9.7 cm)

EXTERNAL DIMS:
21.62" x 17.25" x 4.87"
(54.9 x 43.8 x 12.4 cm)

■ ■

Cat. No. 1495**
Cat. No. 1495NF***

1430 TOP LOADER CASE

INTERNAL DIMS:
13.56" x 5.76" x 11.70"
(34.4 x 14.6 x 29.7 cm)

EXTERNAL DIMS:
16.40" x 8.71" x 13.15"
(41.6 x 22.1 x 33.4 cm)

■ ■ ■ ■ ■ *

Cat. No. 1430**
Cat. No. 1430NF***
Cat. No. 1434 (with padded divider and lid organizer)
Cat. No. 1437 (with padded office divider and lid organizer)

1490CC1 CASE

INTERNAL DIMS:
17.75" x 11.37" x 4.12"
(45.1 x 28.9 x 10.5 cm)

EXTERNAL DIMS:
19.87" x 13.93" x 4.68"
(50.4 x 35.4 x 11.9 cm)

■ ■

Cat. No. 1490CC1
Case with lid organizer, fitted shock absorbing tray, and removable shoulder strap

1495CC1 CASE

INTERNAL DIMS:
18.87" x 13.12" x 3.81"
(47.9 x 33.3 x 9.7 cm)

EXTERNAL DIMS:
21.62" x 17.25" x 4.87"
(54.9 x 43.8 x 12.4 cm)

■ ■

Cat. No. 1495CC1
Case with lid organizer, shock absorbing tray, nylon padded computer sleeve, accessories pouch, and removable shoulder strap

1440 TOP LOADER CASE

INTERNAL DIMS:
17.10" x 7.50" x 16.00"
(43.4 x 19 x 40.6 cm)

EXTERNAL DIMS:
19.70" x 12.00" x 18.00"
(50 x 30.5 x 45.7 cm)

■ ■ ■ ■ ■ *

Cat. No. 1440**
Cat. No. 1440NF***
Cat. No. 1444 (with utility padded divider and lid organizer)
Cat. No. 1447 (with padded office divider and lid organizer)

MEDIUM PROTECTOR CASES

Mobility with room for protecting larger gear or multiple instruments and accessories. Interior options are available for extra protection. Select models meet carry-on luggage specifications. Most cases are available empty, with foam or padded dividers. See chart on page 19.

Look for this icon for wheels on select models.

1450 CASE

INTERNAL DIMS:
14.66" x 10.24" x 6.12"
(37.2 x 26 x 15.5 cm)

EXTERNAL DIMS:
16.54" x 13.03" x 6.84"
(42 x 33.1 x 17.4 cm)

■ ■ ■ ■ ■ *

Cat. No. 1450**
Cat. No. 1450NF***
Cat. No. 1454NF****



1460 CASE

INTERNAL DIMS:
18.54" x 9.92" x 10.92"
(47.1 x 25.2 x 27.7cm)

EXTERNAL DIMS:
20.85" x 12.73" x 12.75"
(52.9 x 32.3 x 32.4 cm)

■ ■ ■ ■ *

Cat. No. 1460**
Cat. No. 1460NF***
Cat. No. 1460AALG
Includes custom foam for 9430/9435



1460 TOOL CASE

INTERNAL DIMS:
18.54" x 9.92" x 10.92"
(47.1 x 25.2 x 27.7cm)

EXTERNAL DIMS:
20.85" x 12.73" x 12.75"
(52.9 x 32.3 x 32.4 cm)

■ ■ ■ ■ ■

Cat. No. 1460TOOL
Case with adjustable and removable tray dividers for easy customization



1460 EMS CASE

INTERNAL DIMS:
18.54" x 9.92" x 10.92"
(47.1 x 25.2 x 27.7 cm)

EXTERNAL DIMS:
20.85" x 12.73" x 12.75"
(52.9 x 32.3 x 32.4 cm)

■ ■ ■

Cat. No. 1460EMS
Case with custom configured lid organizer and trays for EMS professionals



1500 CASE

INTERNAL DIMS:
16.75" x 11.18" x 6.12"
(42.5 x 28.4 x 15.5 cm)

EXTERNAL DIMS:
18.50" x 14.06" x 6.93"
(47 x 35.7 x 17.6 cm)

■ ■ ■ ■ ■ ■ *

Cat. No. 1500**
Cat. No. 1500NF***
Cat. No. 1504****



1500 EMS CASE

INTERNAL DIMS:
16.75" x 11.18" x 6.12"
(42.5 x 28.4 x 15.5 cm)

EXTERNAL DIMS:
18.50" x 14.06" x 6.93"
(47 x 35.7 x 17.6 cm)

■ ■ ■ ■

Cat. No. 1500EMS
Case with custom configured lid organizer and trays for EMS professionals



1510 LOC CASE

INTERNAL DIMS:
19.75" x 11.00" x 7.60"
(50.1 x 27.9 x 19.3 cm)

EXTERNAL DIMS:
22.00" x 13.81" x 9.00"
(55.9 x 35.1 x 22.9 cm)

■ ■ ■ ■ *

Cat. No. 1510LOC
Case with fully enclosed apparel insert, padded laptop sleeve, and accessory pouch



1520 CASE

INTERNAL DIMS:
18.06" x 12.89" x 6.72"
(45.9 x 32.7 x 17.1 cm)

EXTERNAL DIMS:
19.78" x 15.77" x 7.41"
(50.2 x 40 x 18.8 cm)

■ ■ ■ ■ ■ ■ *

Cat. No. 1520**
Cat. No. 1520NF***
Cat. No. 1524****
Cat. No. 1526
1520 Case with 1527 Convertible Travel Bag



1510 CASE

INTERNAL DIMS:
19.75" x 11.00" x 7.60"
(50.1 x 27.9 x 19.3 cm)

EXTERNAL DIMS:
22.00" x 13.81" x 9.00"
(55.9 x 35.1 x 22.9 cm)

■ ■ ■ ■ *

Cat. No. 1510**
Cat. No. 1510NF***
Cat. No. 1514NF****
Cat. No. 1510TP*****



1510 SC CASE

INTERNAL DIMS:
19.75" x 11.00" x 7.60"
(50.1 x 27.9 x 19.3 cm)

EXTERNAL DIMS:
22.00" x 13.81" x 9.00"
(55.9 x 35.1 x 22.9 cm)

■ ■ ■ ■ *

Cat. No. 1510SC
Case with padded dividers, padded laptop sleeve, and accessory pouch



1510M CASE

INTERNAL DIMS:
19.75" x 11.00" x 7.60"
(50.1 x 27.9 x 19.3 cm)

EXTERNAL DIMS:
23.55" x 14.36" x 10.62"
(59.8 x 36.5 x 27 cm)

■

Cat. No. 1510M**
Cat. No. 1510MNF***
Mobility version features 2 oversized wheels for use on rough terrain



1510 LFC CASE

INTERNAL DIMS:
19.75" x 11.00" x 7.60"
(50.1 x 27.9 x 19.3 cm)

EXTERNAL DIMS:
22.00" x 13.81" x 9.00"
(55.9 x 35.1 x 22.9 cm)

■ ■ ■ ■ *

Cat. No. 1510LFC
Case with Pick N Pluck™ foam, padded laptop sleeve, and accessory pouch



1550 EMS CASE

INTERNAL DIMS:
18.43" x 14.00" x 7.62"
(46.8 x 35.5 x 19.3 cm)

EXTERNAL DIMS:
20.62" x 16.87" x 8.12"
(52.4 x 42.8 x 20.6 cm)

■ ■ ■ ■

Cat. No. 1550EMS
Case with custom configured lid organizer and trays for EMS professionals



LARGE PROTECTOR CASES

Designed for extreme protection during transport and storage. Customizable interiors allow for extra protection and inventory control. Select models feature retractable handles, extra wide grips and sturdy casters for efficient mobility.

Look for this icon for wheels on select models.

STRONGER BY DESIGN
The Pelican Protector™ Case uses an open cell core and solid wall construction, which is actually stronger and lighter than a solid core wall. Travel light with heavy protection. And you know it's a Pelican™ Case by the distinctive dual band top surface. Stainless steel pins are used for hinges and handles. The Double-Throw latches are smarter and easier to open: it's the classic 'C' clamp design with a secondary movement that works like a pry bar to start the release and offers plenty of leverage to open with a light pull.



1560 CASE

INTERNAL DIMS:
19.92" x 14.98" x 9.00"
(50.6 x 38 x 22.9 cm)

EXTERNAL DIMS:
22.07" x 17.92" x 10.42"
(56 x 45.5 x 26.5 cm)

■ ■ ■ ■ ■ ■ *

Cat. No. 1560**
Cat. No. 1560NF***
Cat. No. 1564****
Cat. No. 1560*****



1560M CASE

INTERNAL DIMS:
19.92" x 14.98" x 9.00"
(50.6 x 38 x 22.9 cm)

EXTERNAL DIMS:
23.78" x 18.33" x 12.08"
(60.4 x 46.5 x 30.7 cm)

■

Cat. No. 1560M**
Cat. No. 1560MNF***
Mobility version features 2 oversized wheels for use on rough terrain



1560LOC CASE

INTERNAL DIMS:
19.92" x 14.98" x 9.00"
(50.6 x 38 x 22.9 cm)

EXTERNAL DIMS:
22.07" x 17.92" x 10.42"
(56 x 45.5 x 26.5 cm)

■ ■ ■ *

Cat. No. 1560LOC
Case with fully enclosed apparel insert, padded laptop sleeve, and accessory pouch



1560SC CASE

INTERNAL DIMS:
19.92" x 14.98" x 9.00"
(50.6 x 38 x 22.9 cm)

EXTERNAL DIMS:
22.07" x 17.92" x 10.42"
(56 x 45.5 x 26.5 cm)

■ ■ ■ *

Cat. No. 1560SC
Case with padded dividers, padded laptop sleeve, and accessory pouch



1560LFC CASE

INTERNAL DIMS:
19.92" x 14.98" x 9.00"
(50.6 x 38 x 22.9 cm)

EXTERNAL DIMS:
22.07" x 17.92" x 10.42"
(56 x 45.5 x 26.5 cm)

■ ■ ■ *

Cat. No. 1560LFC
Case with Pick N Pluck™ foam, padded laptop sleeve, and accessory pouch



1600 CASE

INTERNAL DIMS:
21.51" x 16.54" x 7.99"
(54.6 x 42 x 20.3 cm)

EXTERNAL DIMS:
24.39" x 19.36" x 8.79"
(61.9 x 49.2 x 22.3 cm)

■ ■ ■ ■ ■ ■ *

Cat. No. 1600**
Cat. No. 1600NF***
Cat. No. 1604****
Cat. No. 1600TP*****



1600 EMS CASE

INTERNAL DIMS:
21.51" x 16.54" x 7.99"
(54.6 x 42 x 20.3 cm)

EXTERNAL DIMS:
24.39" x 19.36" x 8.79"
(61.9 x 49.2 x 22.3 cm)

■ ■ ■

Cat. No. 1600EMS
Case with custom configured lid organizer and trays for EMS professionals



TESTED.
The Pelican™ Case design is the result of multiple generations of refinement. This evolution is proven through submergence and other lab tests.

1610 CASE



INTERNAL DIMS:
21.78" x 16.69" x 10.62"
(55.3 x 42.4 x 27 cm)

EXTERNAL DIMS:
24.83" x 19.69" x 11.88"
(63 x 50 x 30.2 cm)

■
■
■
*

Cat. No. 1610**
Cat. No. 1610NF***
Cat. No. 1614****
Cat. No. 1610TP*****

1620M CASE



INTERNAL DIMS:
21.48" x 16.42" x 12.54"
(54.5 x 41.7 x 31.8 cm)

EXTERNAL DIMS:
26.20" x 23.00" x 15.61"
(66.5 x 58.4 x 39.6 cm)

■

Cat. No. 1620M**
Cat. No. 1620MNF***
 Mobility version features 2 oversized wheels for use on rough terrain

1650 CASE



INTERNAL DIMS:
28.57" x 17.52" x 10.62"
(72.5 x 44.5 x 27 cm)

EXTERNAL DIMS:
31.59" x 20.47" x 12.45"
(80.2 x 52 x 31.6 cm)

■
■
■
*

Cat. No. 1650**
Cat. No. 1650NF***
Cat. No. 1654****
Cat. No. 1650TP*****

1610M CASE



INTERNAL DIMS:
21.78" x 16.69" x 10.62"
(55.3 x 42.4 x 27 cm)

EXTERNAL DIMS:
26.20" x 23.00" x 13.68"
(66.5 x 58.4 x 34.7 cm)

■

Cat. No. 1610M**
Cat. No. 1610MNF***
 Mobility version features 2 oversized wheels for use on rough terrain

1630 CASE




INTERNAL DIMS:
27.70" x 20.98" x 15.50"
(70.3 x 53.3 x 39.4 cm)

EXTERNAL DIMS:
31.28" x 24.21" x 17.48"
(79.4 x 61.5 x 44.4 cm)

■
■
■
*

Cat. No. 1630**
Cat. No. 1630NF***
Cat. No. 1634****

1660 CASE



INTERNAL DIMS:
28.20" x 19.66" x 17.63"
(71.6 x 49.9 x 44.8 cm)

EXTERNAL DIMS:
31.59" x 22.99" x 19.48"
(80.2 x 58.4 x 49.5 cm)

■
■
■
*

Cat. No. 1660**
Cat. No. 1660NF***
Cat. No. 1664****

1620 CASE



INTERNAL DIMS:
21.48" x 16.42" x 12.54"
(54.5 x 41.7 x 31.8 cm)

EXTERNAL DIMS:
24.76" x 19.57" x 13.90"
(62.9 x 49.7 x 35.3 cm)

■
■
■
*

Cat. No. 1620**
Cat. No. 1620NF***
Cat. No. 1624****

1640 CASE



INTERNAL DIMS:
23.70" x 24.00" x 13.90"
(60.2 x 60.9 x 35.3 cm)

EXTERNAL DIMS:
27.20" x 27.50" x 16.30"
(69.1 x 69.8 x 41.4 cm)

■
■
■
*

Cat. No. 1640**
Cat. No. 1640NF***
Cat. No. 1644****

1670 CASE



INTERNAL DIMS:
28.10" x 16.49" x 9.19"
(71.3 x 41.9 x 23.3 cm)

EXTERNAL DIMS:
31.04" x 19.39" x 11.17"
(78.8 x 49.2 x 28.4 cm)

■
■
■
*

Cat. No. 1670**
 Mobility design features 4 extra-wide wheels and 2 extra-wide handles

1690 CASE



INTERNAL DIMS:
30.13" x 25.13" x 15.36"
(76.5 x 63.8 x 39 cm)

EXTERNAL DIMS:
33.43" x 28.40" x 17.65"
(84.9 x 72.1 x 44.8 cm)

■
■
■
*

Cat. No. 1690**
Cat. No. 1690NF***
Cat. No. 1694****

0340 CASE



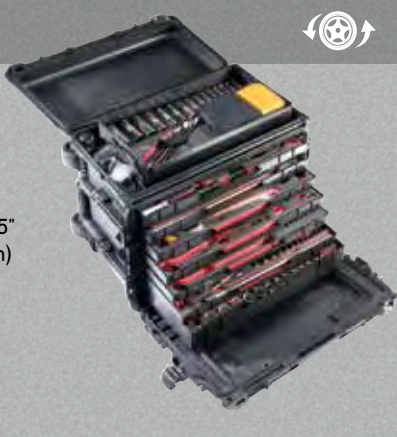
INTERNAL DIMS:
18.00" x 18.00" x 18.00"
(45.7 x 45.7 x 45.7 cm)

EXTERNAL DIMS:
20.50" x 20.50" x 19.25"
(52 x 52 x 48.9 cm)

■
■
■
*

Cat. No. 0340**
Cat. No. 0340NF***
Cat. No. 0344****

0450 CASE



INTERNAL DIMS:
Varies by drawer configuration

EXTERNAL DIMS:
23.95" x 14.75" x 17.95"
(60.8 x 37.5 x 45.6 cm)

■

Cat. No. 0450ND
 (no drawers)
Cat. No. 0450WD
 (with drawers)

1730 CASE



INTERNAL DIMS:
34.00" x 24.00" x 12.50"
(86.3 x 60.9 x 31.7 cm)

EXTERNAL DIMS:
37.05" x 27.20" x 14.37"
(94.1 x 69.1 x 36.5 cm)

■
■
■
*

Cat. No. 1730**
Cat. No. 1730NF***

0350 CASE



INTERNAL DIMS:
20.00" x 20.00" x 20.00"
(50.8 x 50.8 x 50.8 cm)

EXTERNAL DIMS:
22.50" x 22.43" x 21.25"
(57.1 x 56.9 x 54 cm)

■
■
■
*

Cat. No. 0350**
Cat. No. 0350NF***
Cat. No. 0354****

0500 CASE




INTERNAL DIMS:
34.95" x 18.45" x 25.25"
(88.7 x 46.8 x 64.1 cm)

EXTERNAL DIMS:
39.95" x 23.45" x 28.65"
(101.4 x 59.5 x 72.7 cm)

■

Cat. No. 0500**
Cat. No. 0500NF***

1780 CASE



INTERNAL DIMS:
41.12" x 21.54" x 14.88"
(104.4 x 54.7 x 37.8 cm)

EXTERNAL DIMS:
44.90" x 25.32" x 16.50"
(114 x 64.3 x 41.9 cm)

■
■
■
*

Cat. No. 1780**
Cat. No. 1780NF***

0370 CASE



INTERNAL DIMS:
24.00" x 24.00" x 24.00"
(60.9 x 60.9 x 60.9 cm)

EXTERNAL DIMS:
26.50" x 26.50" x 25.25"
(67.3 x 67.3 x 64.1 cm)

■
■
■
*

Cat. No. 0370**
Cat. No. 0370NF***
Cat. No. 0374****

0550 CASE



INTERNAL DIMS:
47.57" x 24.07" x 17.68"
(120.8 x 61.1 x 44.9 cm)


EXTERNAL DIMS:
51.05" x 27.54" x 22.79"
(129.6 x 69.9 x 57.9 cm)

■

Cat. No. 0550**
Cat. No. 0550NF***
 SHOWN WITH OPTIONAL CASTER WHEELS

LONG PROTECTOR CASES

Ideal for weapons, but are also used by industrial workers for instruments and gear. Equipped with sturdy polyurethane wheels for ease of transport. All Long Cases are available empty or with solid foam (not Pick N Pluck™ foam). See chart on page 19.

 All Long Cases are equipped with wheels

1700 CASE



INTERNAL DIMS:
35.75" x 13.50" x 5.25"
(90.8 x 34.3 x 13.3 cm)

EXTERNAL DIMS:
38.12" x 16.00" x 6.12"
(96.8 x 40.6 x 15.5 cm)

■ ■ ■ *

Cat. No. 1700**
Cat. No. 1700NF***



1720 CASE



INTERNAL DIMS:
42.00" x 13.50" x 5.25"
(106.6 x 34.3 x 13.3 cm)

EXTERNAL DIMS:
44.37" x 16.00" x 6.12"
(112.7 x 40.6 x 15.5 cm)

■ ■ ■ *

Cat. No. 1720**
Cat. No. 1720NF***



1740 CASE



INTERNAL DIMS:
40.98" x 12.92" x 12.13"
(104 x 32.8 x 30.8 cm)

EXTERNAL DIMS:
44.16" x 16.09" x 14.00"
(112.1 x 40.9 x 35.5 cm)

■ ■ ■ *

Cat. No. 1740**
Cat. No. 1740NF***



1750 CASE



INTERNAL DIMS:
50.50" x 13.50" x 5.25"
(128.2 x 34.3 x 13.3 cm)

EXTERNAL DIMS:
53.00" x 16.00" x 6.12"
(134.6 x 40.6 x 15.5 cm)

■

Cat. No. 1750**
Cat. No. 1750NF***



1770 CASE

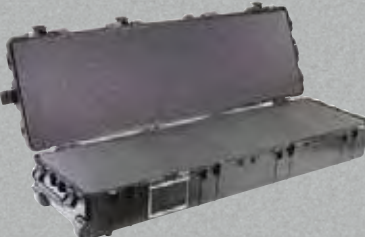


INTERNAL DIMS:
54.58" x 15.58" x 8.63"
(138.6 x 39.6 x 21.9 cm)

EXTERNAL DIMS:
57.42" x 18.48" x 11.23"
(145.8 x 46.9 x 28.5 cm)

■

Cat. No. 1770**
Cat. No. 1770NF***



1780HL CASE



INTERNAL DIMS:
41.12" x 21.54" x 14.88"
(104.4 x 54.7 x 37.8 cm)

EXTERNAL DIMS:
44.90" x 25.32" x 16.50"
(114 x 64.3 x 41.9 cm)

■ ■ ■ *

Cat. No. 1780HL
(rifle hard liner insert)
Cat. No. 1700RF
(rifle foam cut insert)



EASY RIDING

Stainless steel ball bearing wheels (on select cases) last longer and ride smoother. The nylon hub adjacent to the stainless steel resists heat. Result: less wear and tear on the polyurethane tire.



NYLON HUB

STAINLESS STEEL
BALL BEARING WHEELS

POLYURETHANE TIRE



PELICAN[™]
STORM CASE[™]

You've got equipment to protect, and a Pelican[™] Storm Case[™] has been engineered to do just that. How? It's all about the resin: our proprietary HPX[®] polymer is proven to resist impacts even in low-temperature laboratory testing. But the real proof is in the bragging rights that come with survival. Because to a Pelican[™] Storm Case[™], falling from a helicopter, crashing down Class V rapids or taking a hit in the center lane of the New Jersey turnpike is all in a day's work.

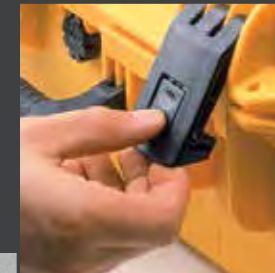


PELICAN[™] STORM SMALL CASES

Perfect for small gear and instruments with all the features found in our larger cases: strong HPX[™] resin construction, Vortex valve, and Press & Pull[™] latches.

PRESS & PULL[™] LATCHES

These smooth-opening, patented latches hold tight under pressure and impact with easy-opening performance. Tested to over 400lbs., yet open with a simple release button.



iM2050 CASE

INTERNAL DIMS:
9.50" x 7.50" x 4.25"
(24.1 x 19 x 10.8 cm)

EXTERNAL DIMS:
11.80" x 9.80" x 4.70"
(30 x 24.9 x 11.9 cm)



Cat. No. iM2050**
Cat. No. iM2050-X0000***
Cat. No. iM2050-X0002****



iM2075

INTERNAL DIMS:
9.50" x 7.50" x 7.25"
(24.1 x 19 x 18.4 cm)

EXTERNAL DIMS:
11.80" x 9.80" x 7.70"
(30 x 24.9 x 19.6 cm)



Cat. No. iM2075**
Cat. No. iM2075-X0000***
Cat. No. iM2075-X0002****



iM2100

INTERNAL DIMS:
13.00" x 9.20" x 6.00"
(33 x 23.4 x 15.2 cm)

EXTERNAL DIMS:
14.20" x 11.40" x 6.50"
(36.1 x 28.9 x 16.5 cm)



Cat. No. iM2100**
Cat. No. iM2100-X0000***
Cat. No. iM2100-X0002****



PELICAN™ STORM
MEDIUM CASES

From firefighters, EMTs, outdoor enthusiasts, and law enforcement to industrial engineers and photographers, there's a Pelican™ Storm Case™ for every professional. Built strong in three standard configurations: Pick N Pluck™ foam, padded dividers (on select models) or empty.

Look for this icon
for wheels on select
models.

iM2200 STORM CASE

INTERNAL DIMS:
15.00" x 10.50" x 6.00"
(38.1 x 26.7 x 15.2 cm)

EXTERNAL DIMS:
16.20" x 12.70" x 6.60"
(41.1 x 32.2 x 16.8cm)



Cat. No. iM2200**
Cat. No. iM2200-X0000***
Cat. No. iM2200-X0002****



MOLDED-IN LOCKABLE HASPS
Twin mating hasp holes on the rim of the case allow attachment of padlocks to keep your gear in and thieves out. And check out Pelican's TSA approved cable padlock. Now you can check your baggage with confidence while flying in the USA. The Travel Security Agency has the key, and you have the combination.



RUGGED IN-LINE WHEELS
Shielded from dust, dirt and other contaminants – ball bearing wheels provide low-friction, low-drag rolling with retractable handles for easy movement of heavy loads.



iM2275 STORM CASE

INTERNAL DIMS:
14.12" x 13.19" x 9.90"
(35.9 x 33.5 x 25.1 cm)

EXTERNAL DIMS:
15.25" x 15.50" x 10.22"
(38.7 x 39.4 x 26 cm)



Cat. No. iM2275**
Cat. No. iM2275-X0000***
Cat. No. iM2275-X0002****



iM2300 STORM CASE

INTERNAL DIMS:
17.00" x 11.70" x 6.20"
(43.2 x 29.7 x 15.7cm)

EXTERNAL DIMS:
18.20" x 13.40" x 6.70"
(46.2 x 34 x 17cm)



Cat. No. iM2300**
Cat. No. iM2300-X0000***
Cat. No. iM2300-X0002****



iM2306 STORM CASE

INTERNAL DIMS:
17.00" x 6.30" x 6.20"
(43.2 x 16 x 15.7cm)

EXTERNAL DIMS:
18.20" x 8.40" x 6.70"
(46.2 x 21.3 x 17cm)



Cat. No. iM2306**
Cat. No. iM2306-X0000***
Cat. No. iM2306-X0002****



iM2450 STORM CASE

INTERNAL DIMS:
18.00" x 13.00" x 8.40"
(45.7 x 33 x 21.3 cm)

EXTERNAL DIMS:
19.20" x 15.20" x 9.00"
(48.7 x 38.6 x 22.9 cm)



Cat. No. iM2450**
Cat. No. iM2450-X0000***
Cat. No. iM2450-X0002****



iM2500 STORM CASE



INTERNAL DIMS:
20.50" x 11.50" x 7.20"
(52 x 29.2 x 18.3 cm)

EXTERNAL DIMS:
21.70" x 14.10" x 8.90"
(55.1 x 35.8 x 22.6 cm)



Cat. No. iM2500**
Cat. No. iM2500-X0000***
Cat. No. iM2500-X0002****
Cat. No. iM2500-00006*****



iM2370 STORM LAPTOP CASE

INTERNAL DIMS:
18.20" x 12.10" x 5.20"
(46.2 x 30.7 x 13.2 cm)

EXTERNAL DIMS:
20.00" x 14.70" x 5.80"
(50.8 x 37.3 x 14.7 cm)



Cat. No. iM2370**
Cat. No. iM2370-X0000***
Cat. No. iM2370-X0002****
Cat. No. iM2370-X0003
(Computer Case Deluxe)



iM2400 STORM CASE

INTERNAL DIMS:
18.00" x 13.00" x 6.70"
(45.7 x 33 x 17 cm)

EXTERNAL DIMS:
19.20" x 15.20" x 7.30"
(48.7 x 38.6 x 18.5 cm)



Cat. No. iM2400**
Cat. No. iM2400-X0000***
Cat. No. iM2400-X0002****



iM2435 STORM CASE



INTERNAL DIMS:
17.50" x 6.50" x 15.50"
(44.4 x 16.5 x 39.4 cm)

EXTERNAL DIMS:
18.63" x 9.25" x 16.50"
(47.3 x 23.5 x 41.9 cm)



Cat. No. iM2435**
Cat. No. iM2435-X0000***
Cat. No. iM2435-X0002****
(includes lid organizer)



iM2600 STORM CASE

INTERNAL DIMS:
20.00" X 14.00" X 7.70"
(50.8 X 35.5 X 19.6 CM)

EXTERNAL DIMS:
21.20" X 16.00" X 8.30"
(53.8 X 40.6 X 21.1 CM)



Cat. No. iM2600**
Cat. No. iM2600-X0000***
Cat. No. iM2600-X0002****



iM2620 STORM CASE



INTERNAL DIMS:
20.00" x 14.00" x 10.00"
(50.8 x 35.5 x 25.4 cm)

EXTERNAL DIMS:
21.20" x 16.00" x 10.60"
(53.8 x 40.6 x 26.9 cm)



Cat. No. iM2620**
Cat. No. iM2620-X0000***
Cat. No. iM2620-X0002****
Cat. No. iM2620-00006*****



PELICAN™ STORM
LARGE CASES

In the lab or out in the field, a large Pelican™ Storm Case™ with HPX™ resin construction stores and protects valuable and sensitive equipment from the elements. Pick N Pluck™ foam adds extra protection from shock during transport.



iM2700 STORM CASE

INTERNAL DIMS:
22.00" x 17.00" x 8.00"
(55.9 x 43.2 x 20.3 cm)

EXTERNAL DIMS:
24.60" x 19.70" x 8.60"
(62.5 x 50 x 21.8 cm)

■ ■ ■

Cat. No. iM2700**
Cat. No. iM2700-X0000***
Cat. No. iM2700-X0002****

iM2750 STORM CASE

INTERNAL DIMS:
22.00" x 17.00" x 12.70"
(55.9 x 43.2 x 32.2 cm)

EXTERNAL DIMS:
24.60" x 19.70" x 14.40"
(62.5 x 50 x 36.6 cm)

■ ■ ■

Cat. No. iM2750**
Cat. No. iM2750-X0000***
Cat. No. iM2750-X0002****

iM2950 STORM CASE

INTERNAL DIMS:
29.00" x 18.00" x 10.50"
(73.6 x 45.7 x 26.7 cm)

EXTERNAL DIMS:
31.30" x 20.40" x 12.20"
(79.5 x 51.8 x 31 cm)

■ ■ ■

Cat. No. iM2950**
Cat. No. iM2950-X0000***
Cat. No. iM2950-X0002****
Cat. No. iM2950-00006*****

iM2720 STORM CASE

INTERNAL DIMS:
22.00" x 17.00" x 10.00"
(55.9 x 43.2 x 25.4 cm)

EXTERNAL DIMS:
24.60" x 19.70" x 11.70"
(62.5 x 50 x 29.7 cm)

■ ■ ■

Cat. No. iM2720**
Cat. No. iM2720-X0000***
Cat. No. iM2720-X0002****
Cat. No. iM2720-00006*****

iM2875 STORM CASE

INTERNAL DIMS:
22.50" x 21.10" x 11.40"
(57.1 x 53.6 x 28.9 cm)

EXTERNAL DIMS:
24.90" x 23.70" x 13.10"
(63.2 x 60.2 x 33.3 cm)

■ ■

Cat. No. iM2870**
Cat. No. iM2870-X0000***
Cat. No. iM2870-X0002****

iM2975 STORM CASE

INTERNAL DIMS:
29.00" x 18.00" x 13.80"
(73.6 x 45.7 x 35 cm)

EXTERNAL DIMS:
31.30" x 20.40" x 15.50"
(79.5 x 51.8 x 39.4 cm)

■ ■

Cat. No. iM2975**
Cat. No. iM2975-X0000***
Cat. No. iM2975-X0002****

iM3075 STORM CASE

INTERNAL DIMS:
29.80" x 20.80" x 17.80"
(75.7 x 52.8 x 45.2 cm)

EXTERNAL DIMS:
33.30" x 24.40" x 19.30"
(84.5 x 62 x 49 cm)

■ ■

Cat. No. iM3075**
Cat. No. iM3075-X0000***
Cat. No. iM3075-X0002****

iM3220 STORM CASE

INTERNAL DIMS:
44.00" x 14.00" x 8.50"
(111.7 x 35.5 x 21.6 cm)

EXTERNAL DIMS:
47.20" x 16.50" x 9.20"
(119.8 x 41.9 x 23.4 cm)

■ ■

Cat. No. iM3220**
Cat. No. iM3220-X0000***

iM3300SGN STORM CASE

INTERNAL DIMS:
50.50" x 14.00" x 6.00"
(128.2 x 35.5 x 15.2 cm)

EXTERNAL DIMS:
53.80" x 16.50" x 6.70"
(136.6 x 41.9 x 17 cm)

■ ■

Cat. No. iM3300SGN**

iM3100 STORM CASE

INTERNAL DIMS:
36.50" x 14.00" x 6.00"
(92.7 x 35.5 x 15.2 cm)

EXTERNAL DIMS:
39.80" x 16.50" x 6.70"
(101.1 x 41.9 x 17 cm)

■ ■

Cat. No. iM3100**
Cat. No. iM3100-X0000***

iM3300 STORM CASE

INTERNAL DIMS:
50.50" x 14.00" x 6.00"
(128.2 x 35.5 x 15.2 cm)

EXTERNAL DIMS:
53.80" x 16.50" x 6.70"
(136.6 x 41.9 x 17 cm)

■ ■

Cat. No. iM3300**
Cat. No. iM3300-X0000***

iM3410 STORM CASE

INTERNAL DIMS:
54.50" x 10.00" x 6.00"
(138.4 x 25.4 x 15.2 cm)

EXTERNAL DIMS:
57.74" x 12.71" x 6.67"
(146.6 x 32.3 x 16.9 cm)

■ ■

Cat. No. iM3410**
Cat. No. iM3410-X0000***

iM3200 STORM CASE

INTERNAL DIMS:
44.00" x 14.00" x 6.00"
(111.7 x 35.5 x 15.2 cm)

EXTERNAL DIMS:
47.20" x 16.50" x 6.70"
(119.8 x 41.9 x 17 cm)

■ ■

Cat. No. iM3200**
Cat. No. iM3200-X0000***

iM3300RFL STORM CASE

INTERNAL DIMS:
50.50" x 14.00" x 6.00"
(128.2 x 35.5 x 15.2 cm)

EXTERNAL DIMS:
53.80" x 16.50" x 6.70"
(136.6 x 41.9 x 17 cm)

■ ■

Cat. No. iM3300RFL**

DOUBLE-LAYER, SOFT-GRIP HANDLES

When the weather goes south you'll find a secure grip that won't slip. An in-tool vulcanizing process over-molds the grips to the polymer handle for a lifetime of dependable performance.

VORTEX® PRESSURE RELEASE VALVE

The built-in technology of Pelican Storm Cases automatic pressure equalization valve is also a patented feature. During air travel it prevents vacuum lock to make opening the case natural, even after extreme altitude changes. At the same time, the microscopic filter blocks water molecules and dust particles so your gear stays clean in the Gobi Desert and dry on the Nile River.